

An aerial photograph of a vast vineyard in Yakima, Washington. The rows of grapevines are neatly organized and stretch across the foreground and middle ground. In the background, there are rolling hills with a mix of green and brown tones, suggesting a dry climate. A small town or village is visible in the distance, nestled between the vineyard and the hills. The sky is clear and bright, indicating a sunny day.

# YAKIMA CENTRAL PLAZA

GUSTAFSON GUTHRIE NICHOL  
Graham Baba Architects  
Magnusson Klemencic Associates

# Team Organization



# Themes

- **Transformative Placemaking:** A catalyst to activate an area
- **Connections:** Relinking downtown
- **Event Spaces:** Transformation to day-to-day
- **Genius Loci:** How to make a place that fits



# Transformative Placemaking:

A catalyst to activate an area

# Melrose Market

Seattle, WA





BEFORE



AFTER





Image credit: Graham Baba Architects

# Via 6

Seattle, WA

Image credit: Benjamin Benschneider





Image credit: Benjamin Benschneider



Image credit: Benjamin Benschneider



Image credit: Benjamin Benschneider



Image credit: Benjamin Benschneider

# Pybus Public Market

Wenatchee, WA







Image credit: Graham Baba Architects



Image credit: Marjorie Lund

# Cowiche Canyon Kitchen

Yakima, WA



Image credit: Graham Baba Architects



Image credit: Graham Baba Architects

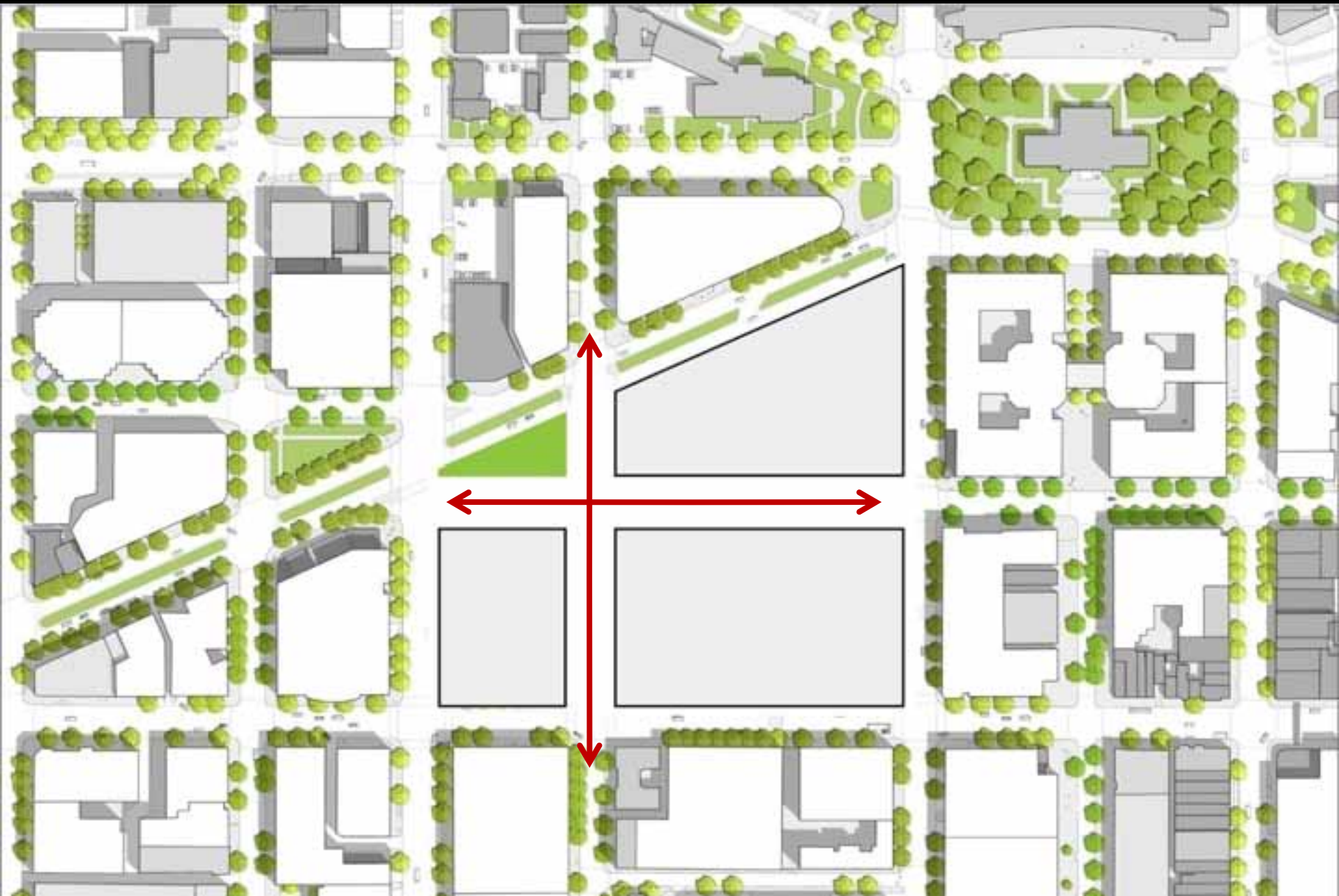
# Center City DC

## Washington DC

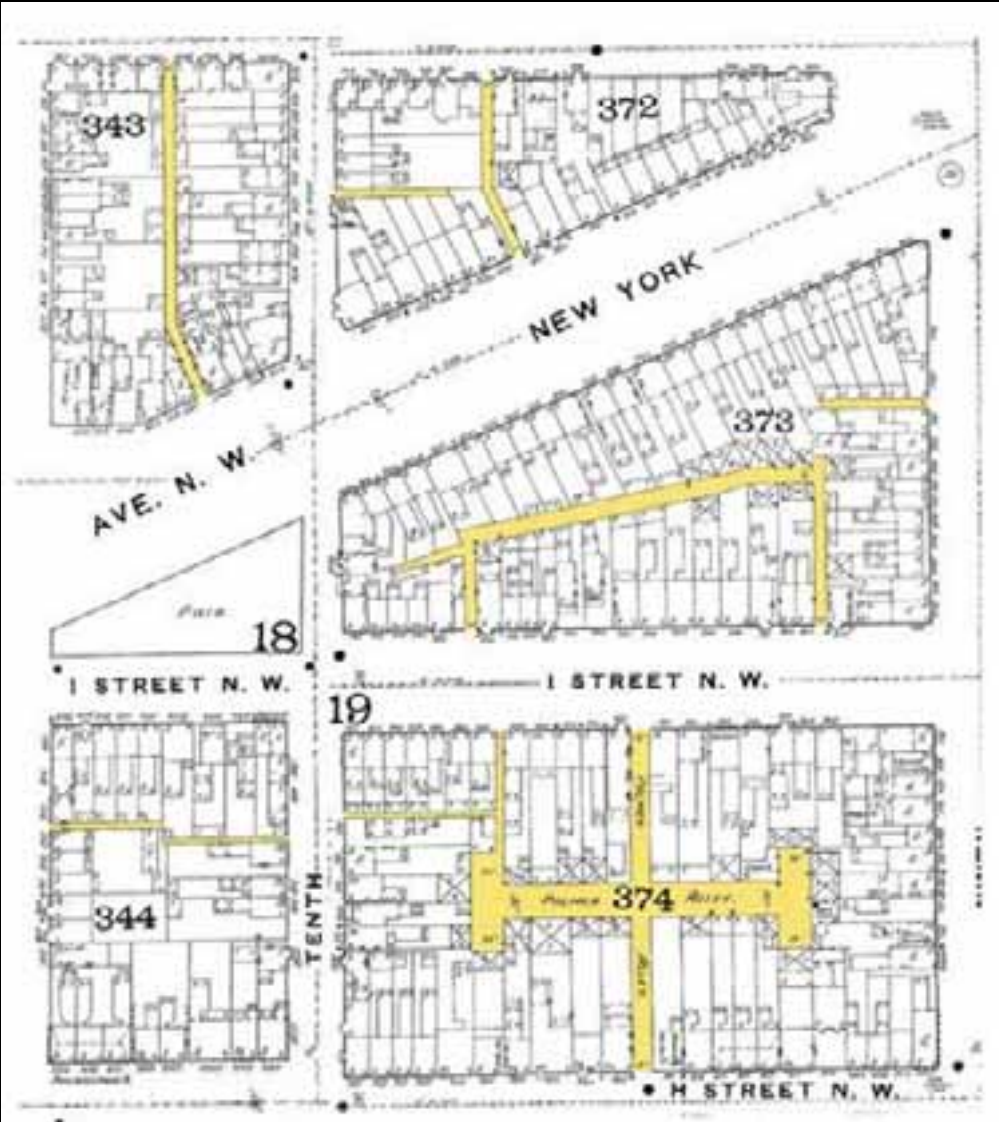


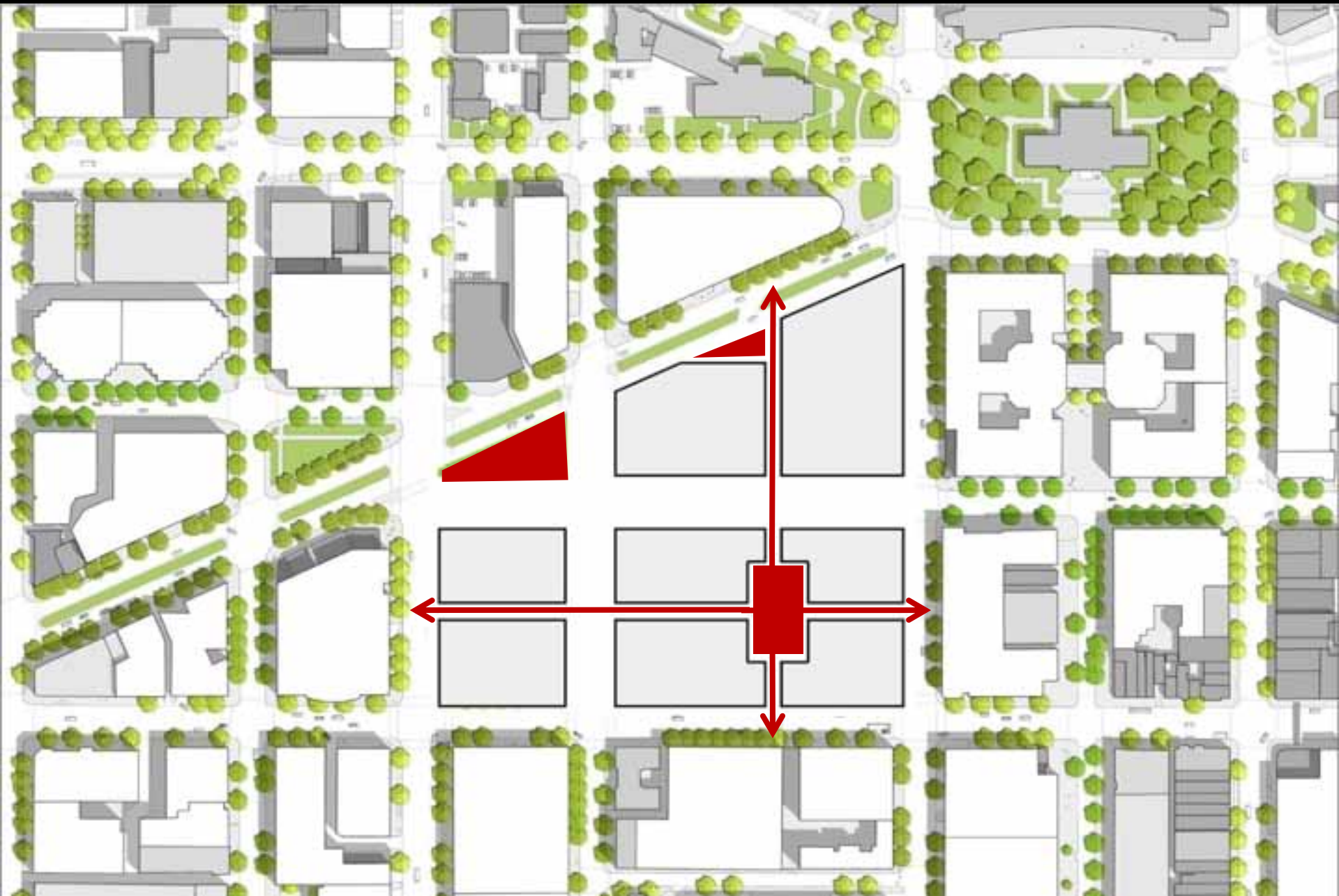






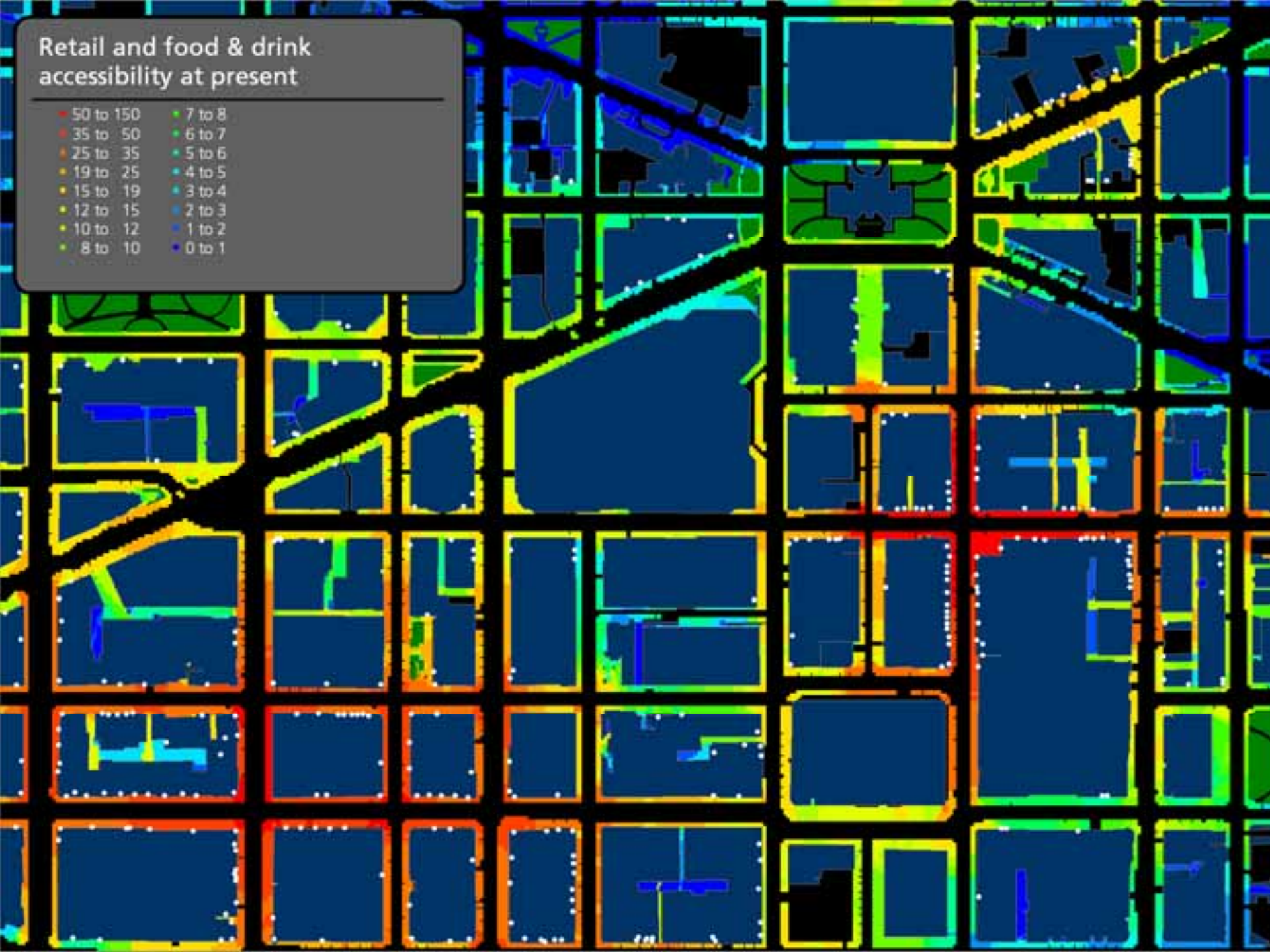
# Neighborhood c. 1888





## Retail and food & drink accessibility at present

- |           |        |
|-----------|--------|
| 50 to 150 | 7 to 8 |
| 35 to 50  | 6 to 7 |
| 25 to 35  | 5 to 6 |
| 19 to 25  | 4 to 5 |
| 15 to 19  | 3 to 4 |
| 12 to 15  | 2 to 3 |
| 10 to 12  | 1 to 2 |
| 8 to 10   | 0 to 1 |



## Retail and food & drink accessibility Scheme 7

- |           |        |
|-----------|--------|
| 50 to 150 | 7 to 8 |
| 35 to 50  | 6 to 7 |
| 25 to 35  | 5 to 6 |
| 19 to 25  | 4 to 5 |
| 15 to 19  | 3 to 4 |
| 12 to 15  | 2 to 3 |
| 10 to 12  | 1 to 2 |
| 8 to 10   | 0 to 1 |



# NW Park: Site Plan



# North West Park













Gee's Bend Quilts



Image credit: Flickr user  
Andre Natta



Central Plaza



# Central Plaza: Events





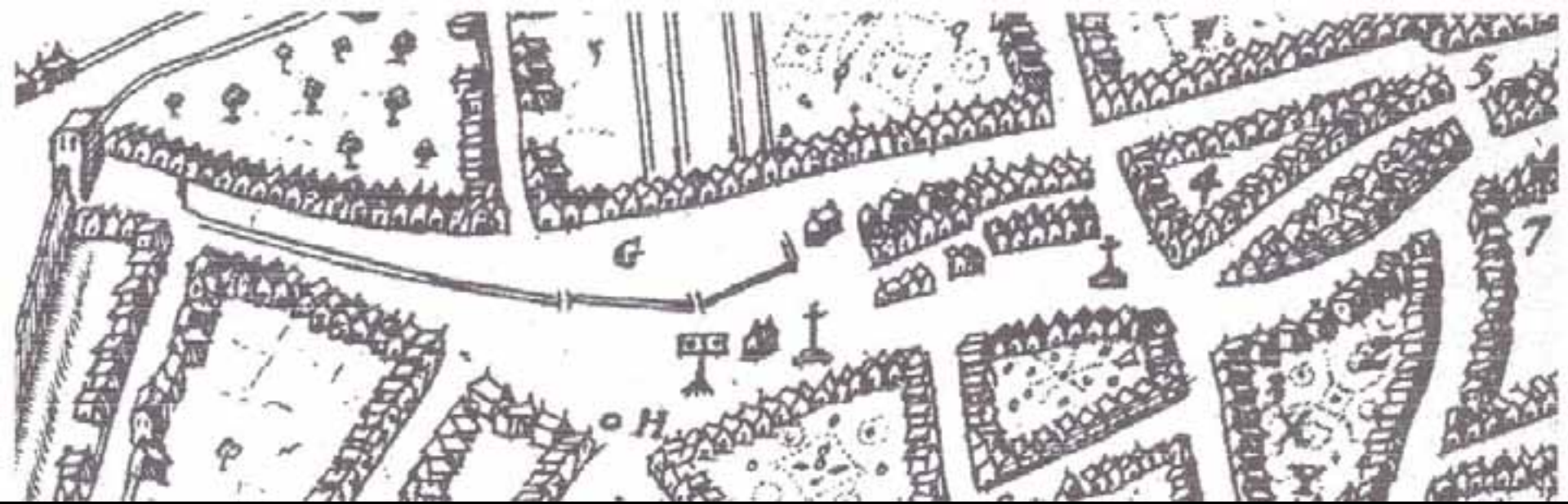
Image credit: Neoscape



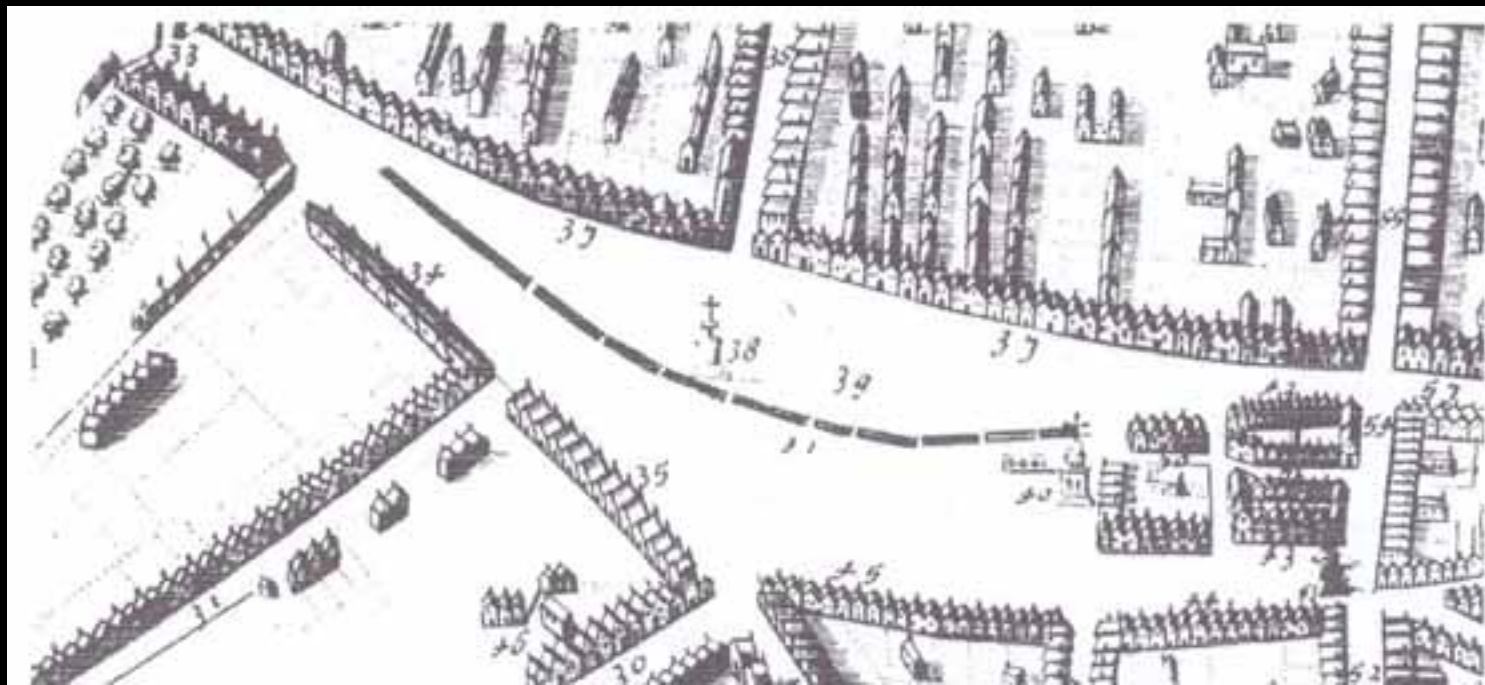


# Old Market Square

Nottingham, UK



Old Market Square, Nottingham







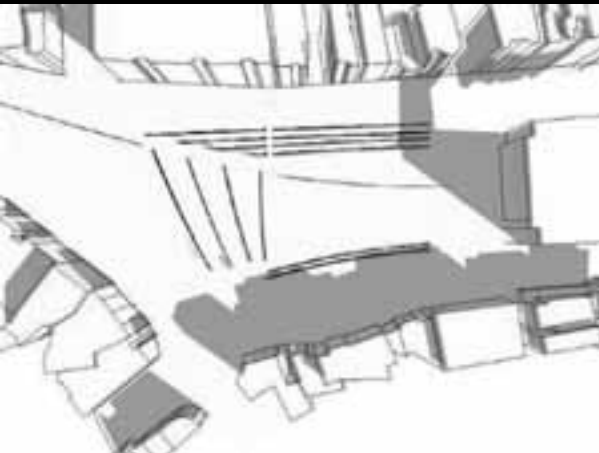
26.2 The Existing Elevation from The Council House into Processional Way

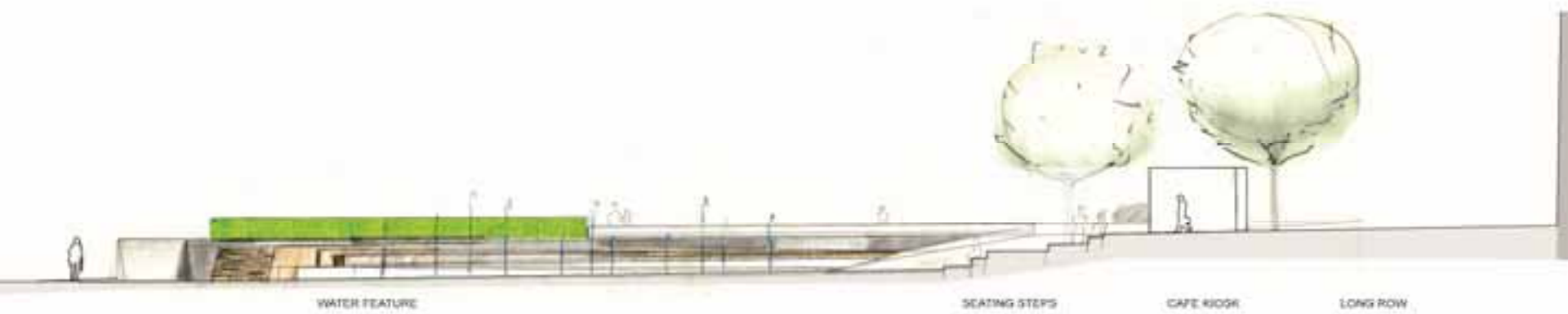


26.1 The Existing Elevation Of The Council House From Processional Way



STUDY OF THE EXISTING ELEVATION























Connections: Relinking downtown

# Theater Commons

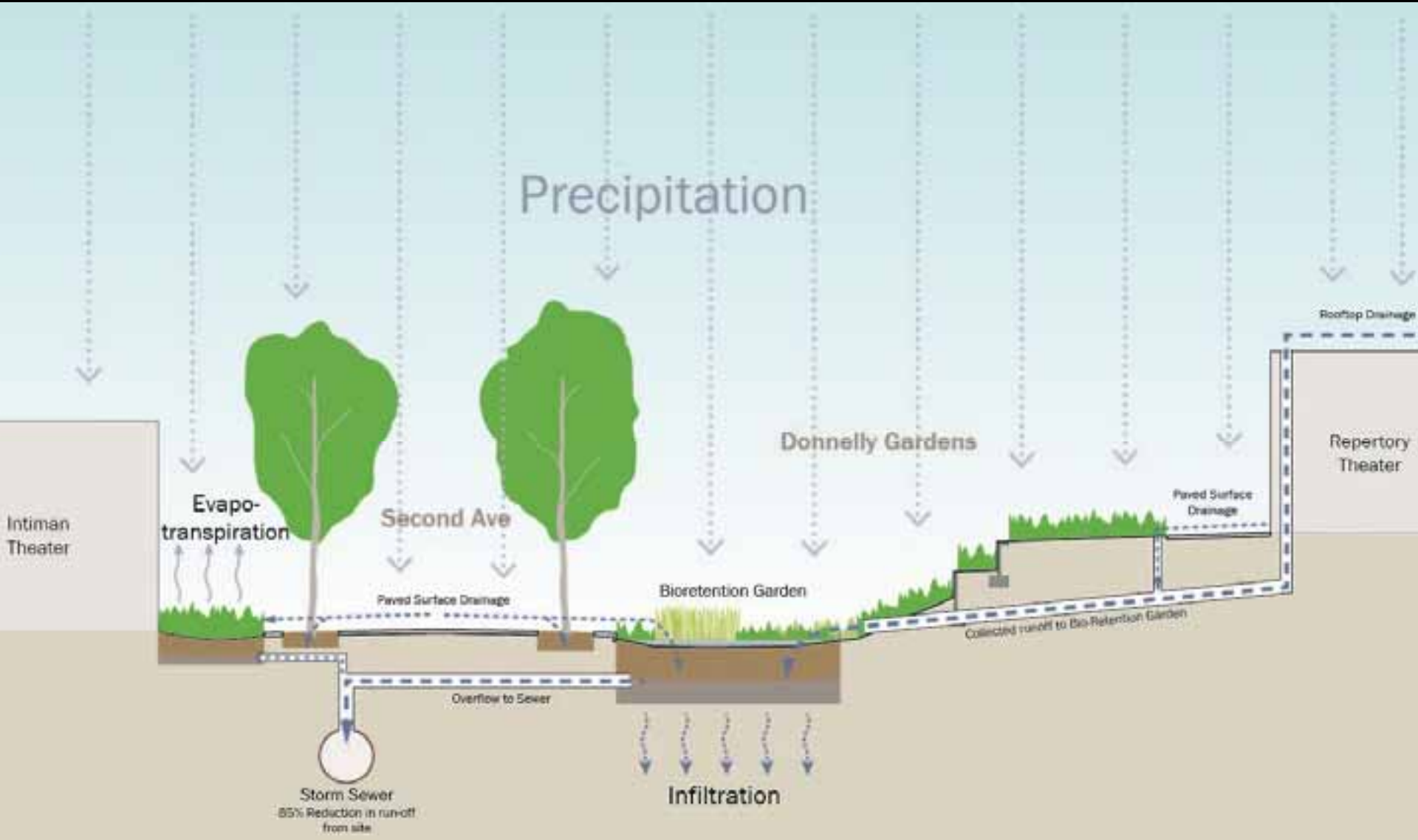
Seattle, WA











University of Washington  
West Campus Housing  
Seattle, WA



Cedar Apts

Elm Hall

Poplar Hall

Alder Hall

UNIVERSITY OF WASHINGTON  
CENTRAL CAMPUS

Robbseye Way NE

NE 44th St

NE CAMPUS PASSWAY

NE 40th St

BROOKLYN AVE NE

UNIVERSITY WAY

15th Ave NE

LAKE UNION

## CAMPUS PARKWAY: BEFORE

### OPAQUE BUILDING FACADE

- No interior/exterior relationship

### NARROW SIDEWALK

- No social gathering space
- Encourages foot traffic in planting strip

### UNHEALTHY TREE

- Exposed tree roots
- Compacted soil
- Trip hazard
- Roots displacing adjacent paving

### NARROW TRANSIT SPACE

- Crowding at bus loading area
- Danger of arriving traffic

## CAMPUS PARKWAY: TODAY

### VOLUNTARY SETBACK

- Planting area
- Increases the volume of the sidewalk
- Increases water infiltration area

### TRANSPARENT BUILDING FACADE

- Visible building activity invites students
- Increases safety with visibility & light

### WIDER SIDEWALK

- Ample room for pedestrian flow
- Allows gathering eddies in public realm
- Directs surface water to planters

### STREET FURNITURE

- Social gathering spaces
- Transit amenities
- Shelter from weather
- Gives character



### CONTINUOUS TREE TRENCH

- Healthy tree growth
- Permeable pavers
- Water infiltration
- Improved pedestrian environment



### EXTENDED PEDESTRIAN AREA

- Safer pedestrian & vehicular environment
- Narrower road
- Ample room for transit









Image credit: John Keatley





# Event Spaces:

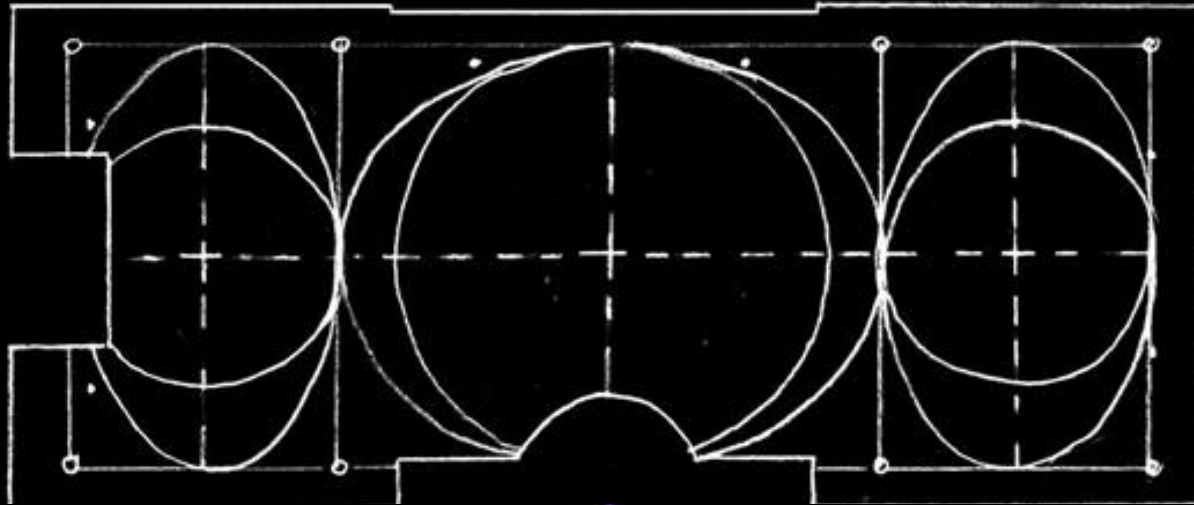
How to transform to day-to-day

Robert and Arlene Kogod Courtyard  
Smithsonian American Art Museum  
& National Portrait Gallery  
Washington DC

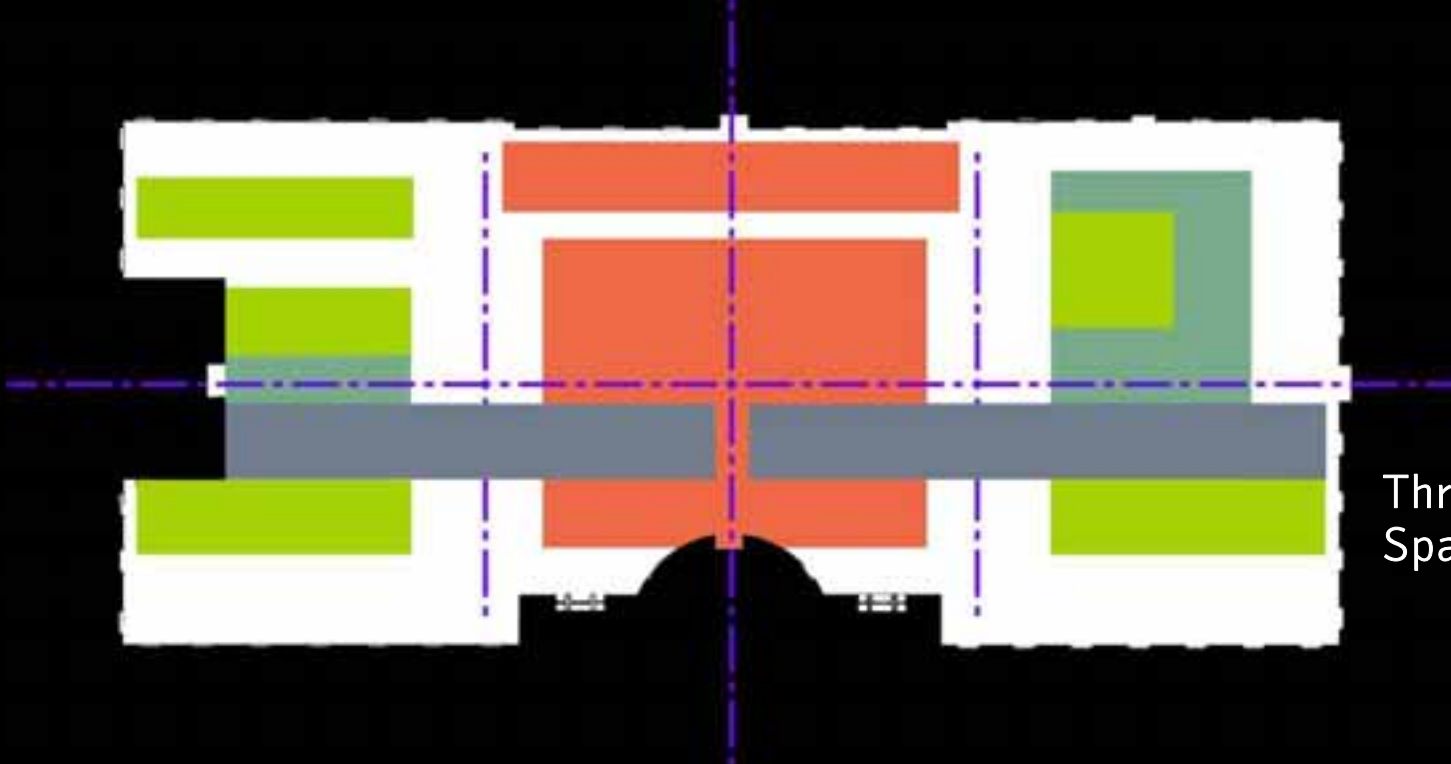


Image credit: Smithsonian Ken Rahaim



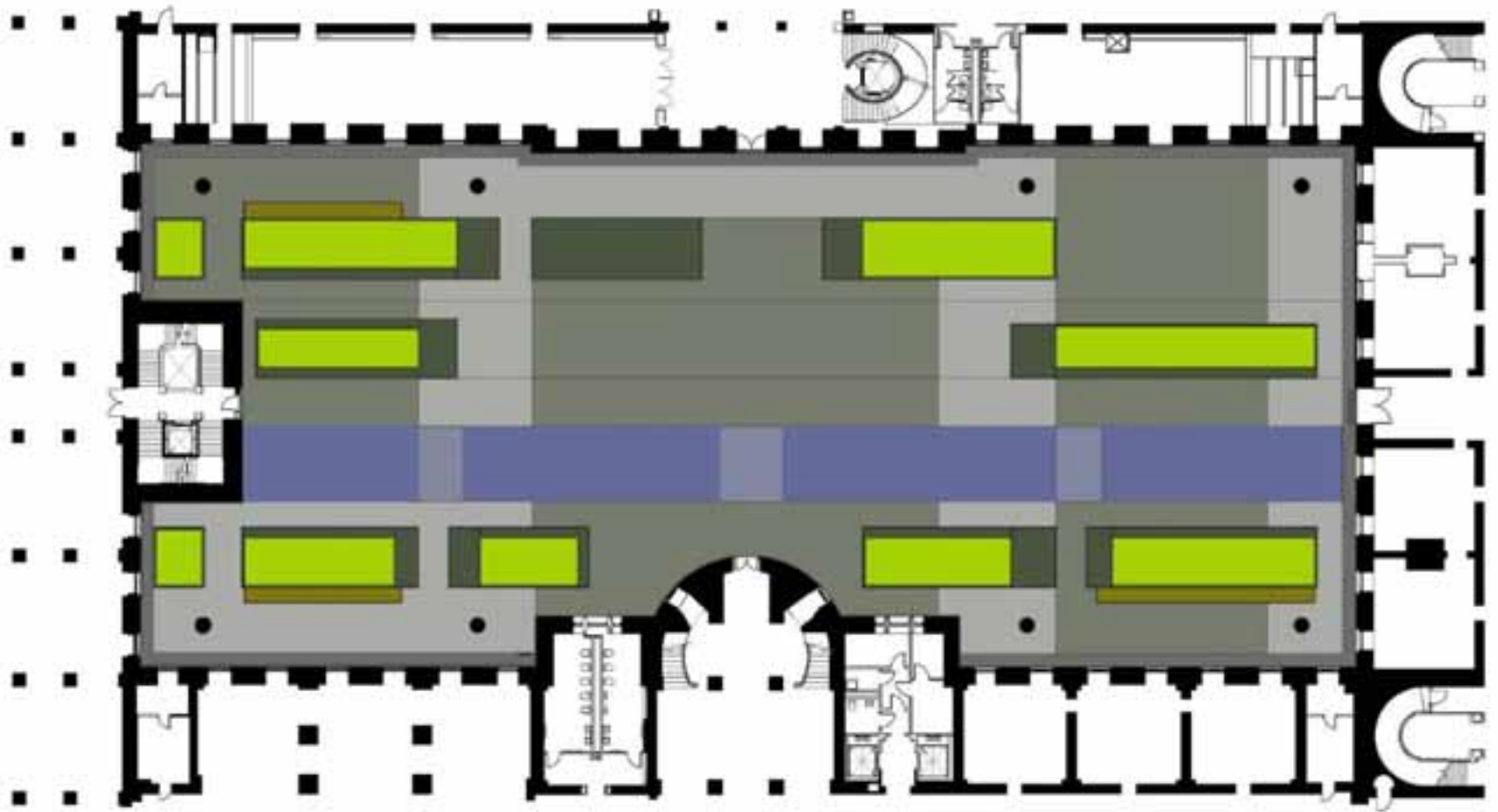


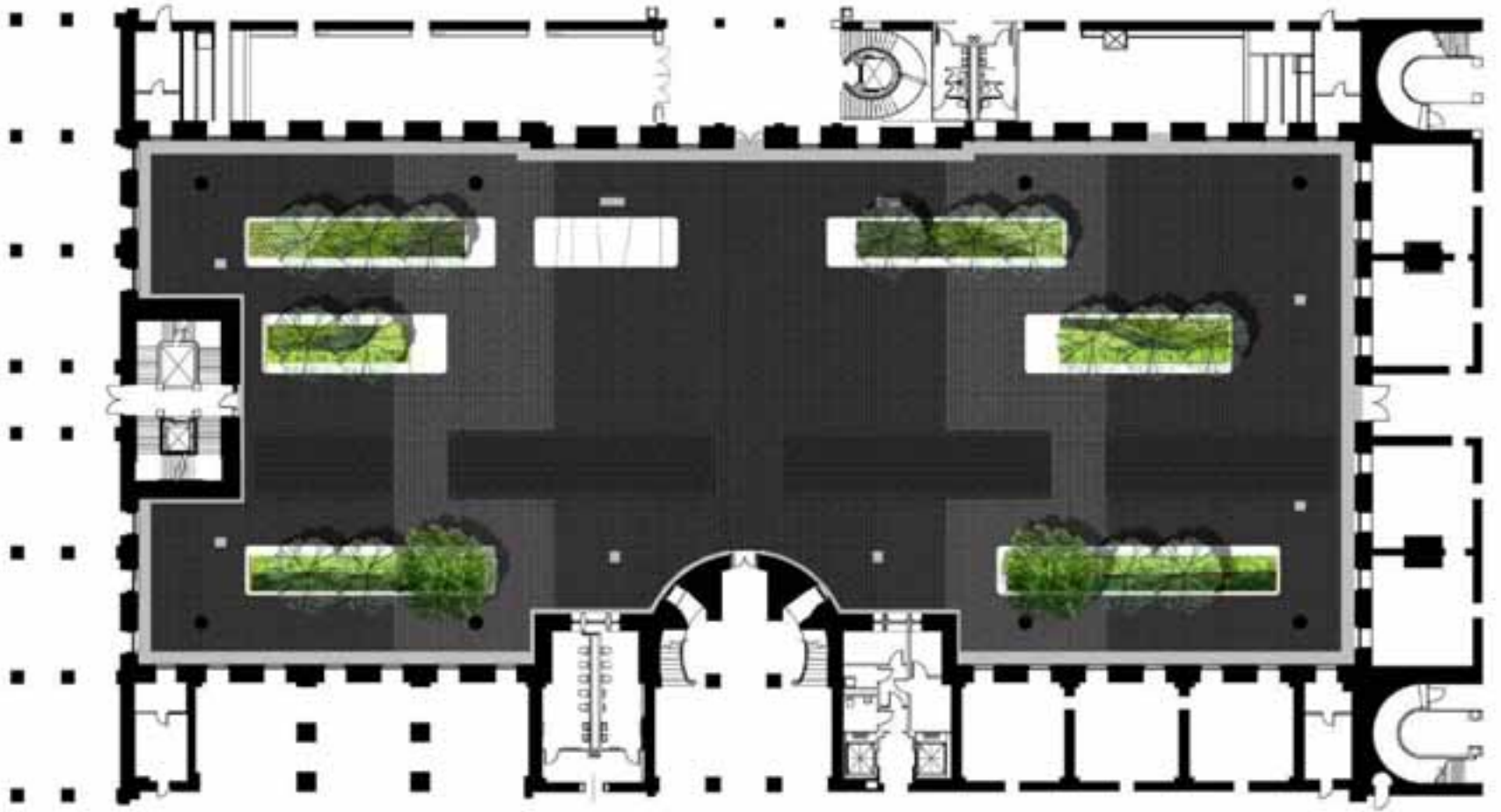
Geometry



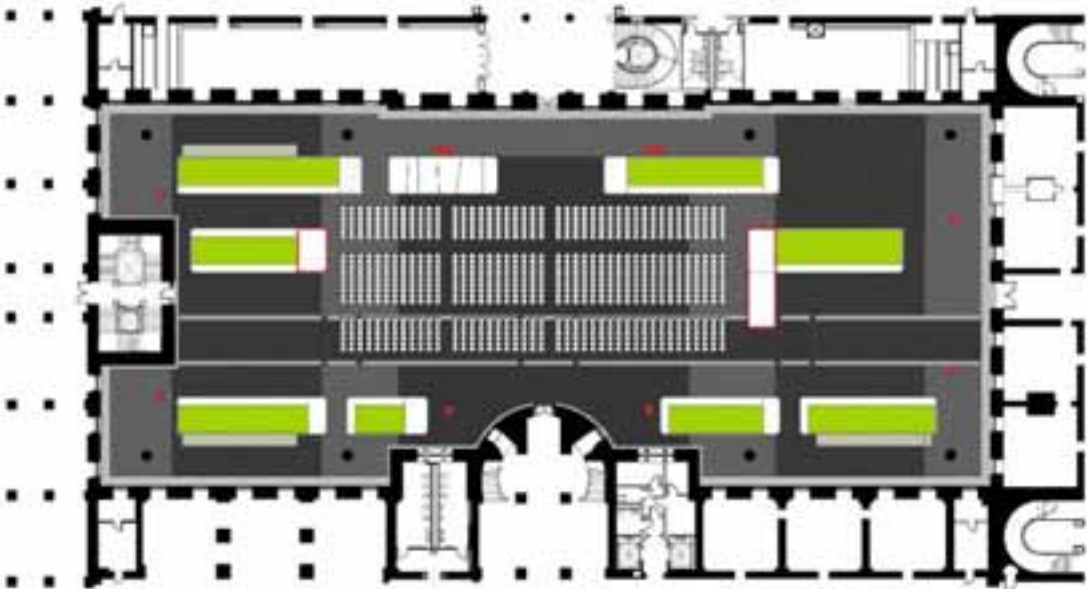
Three Part Space



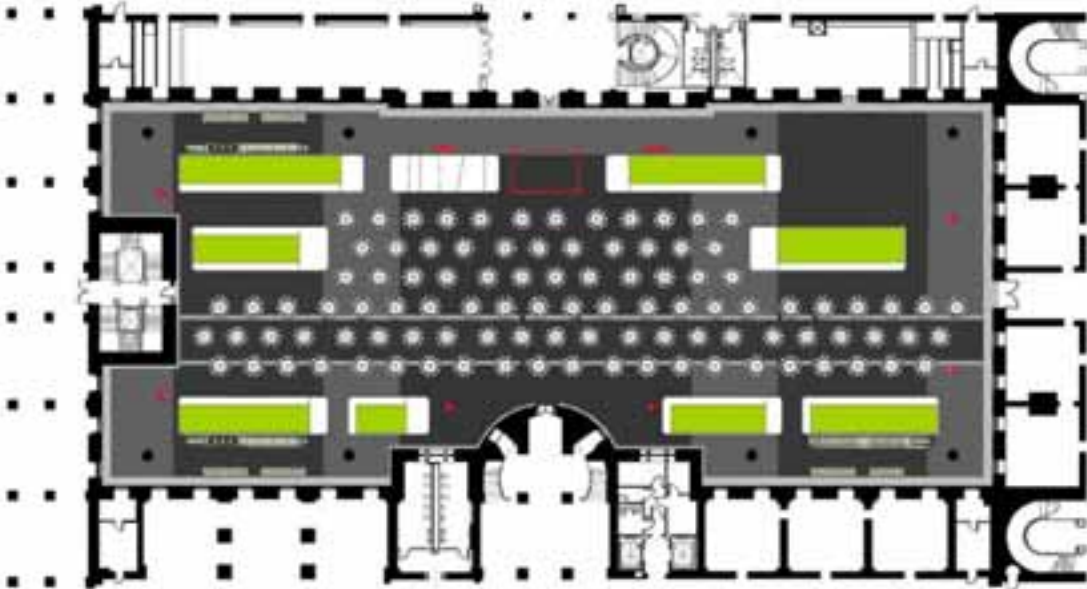




# Catering and Events



Concert Seats 900



Dinner Seats 1000



Image credit: Nigel Young, Foster & Partners



Image credit: Chuck Choi





















The Kreielsheimer Promenade  
Marion O. McCaw Hall  
Seattle, WA















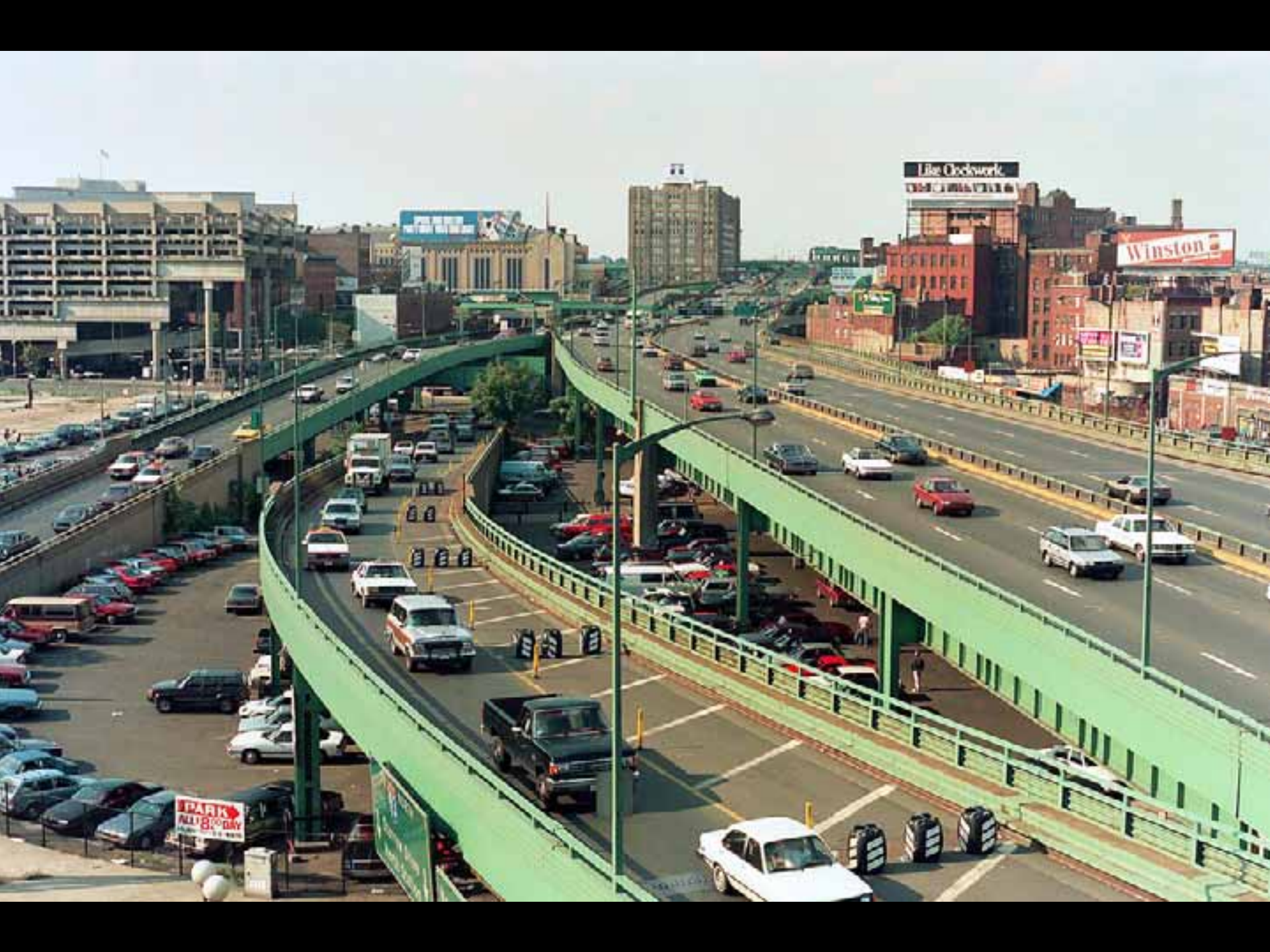




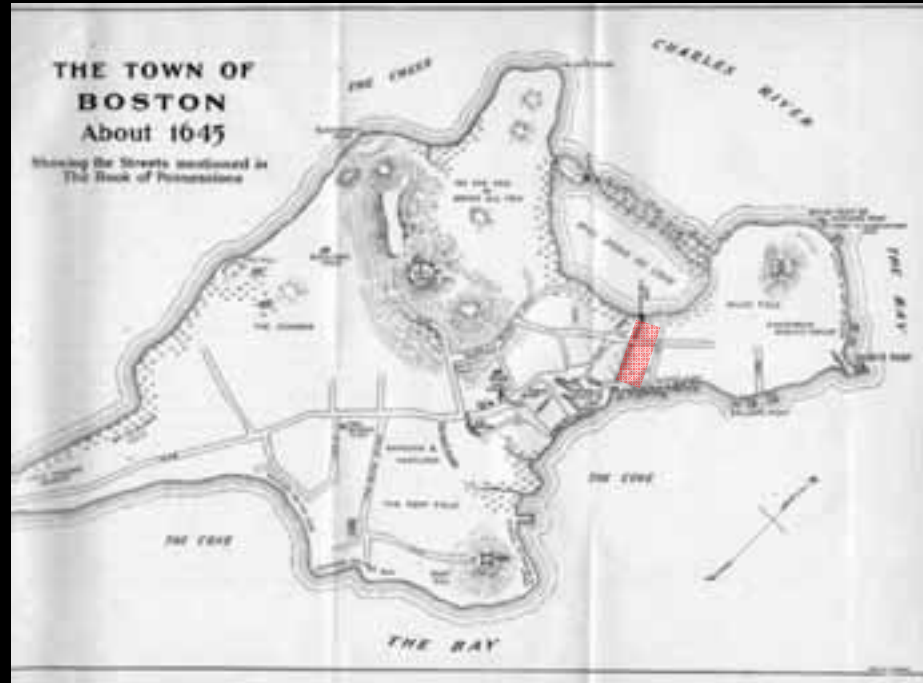
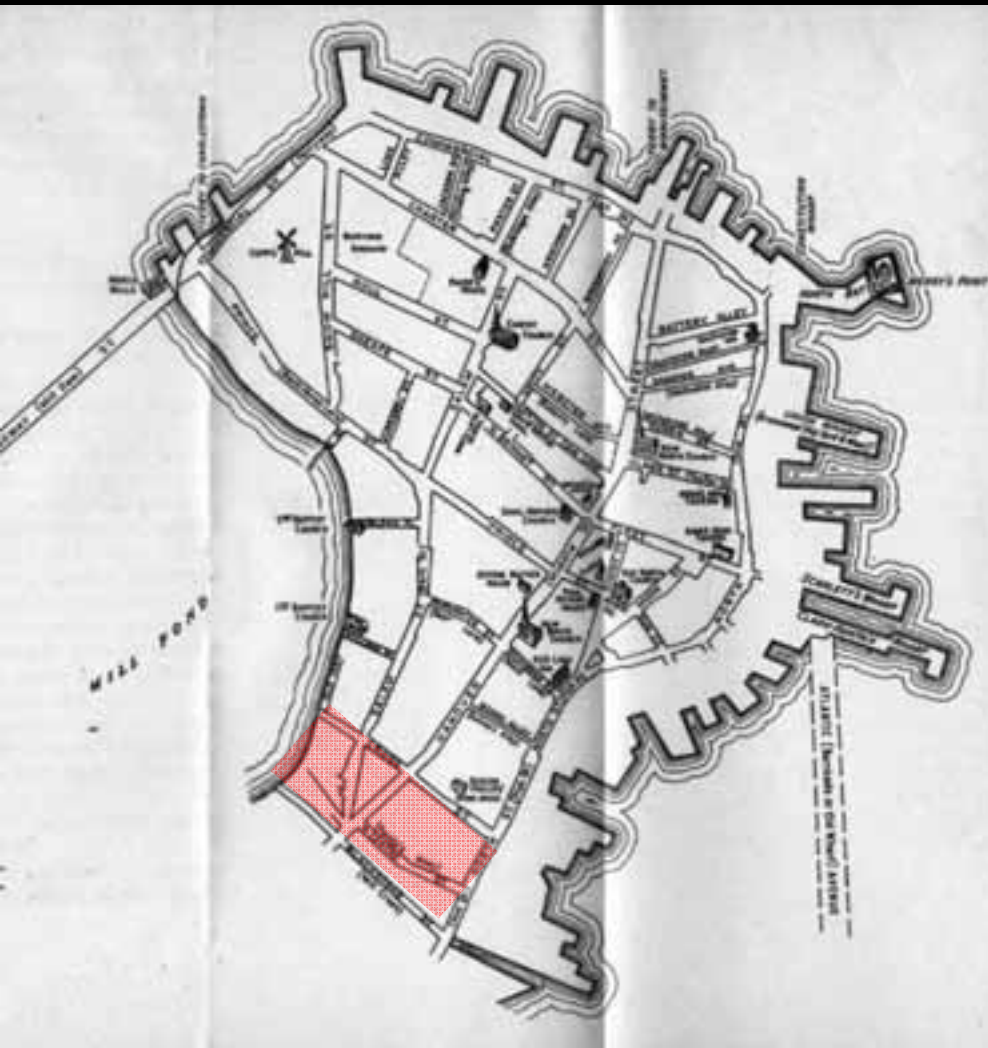


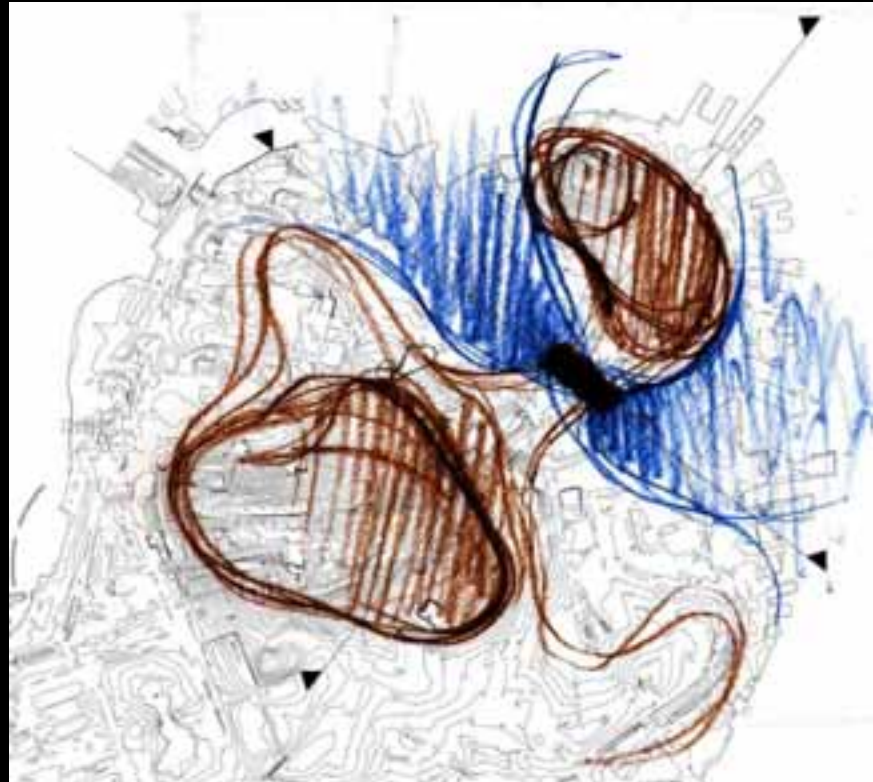


**Genius Loci:** How to make a place that fits









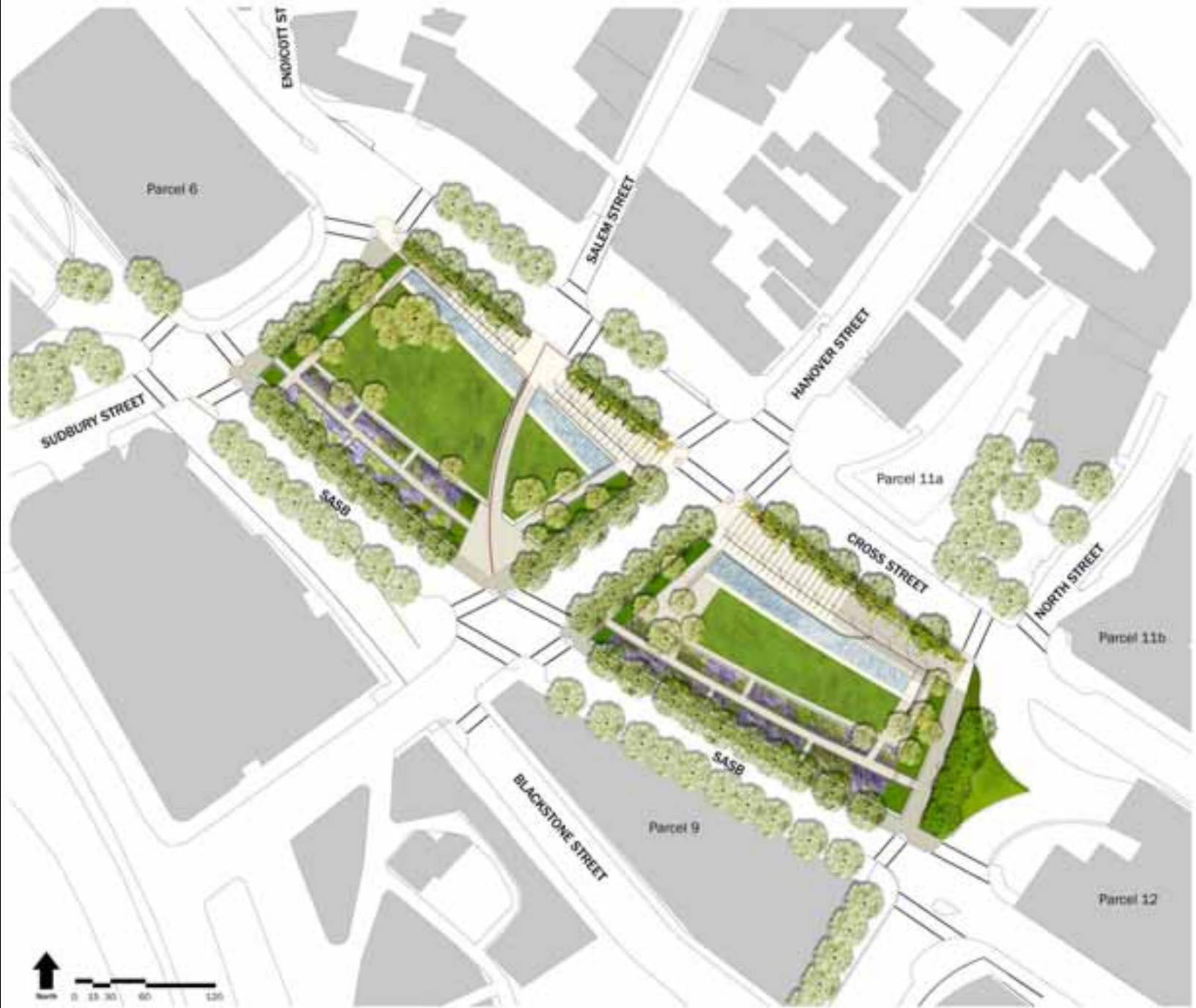




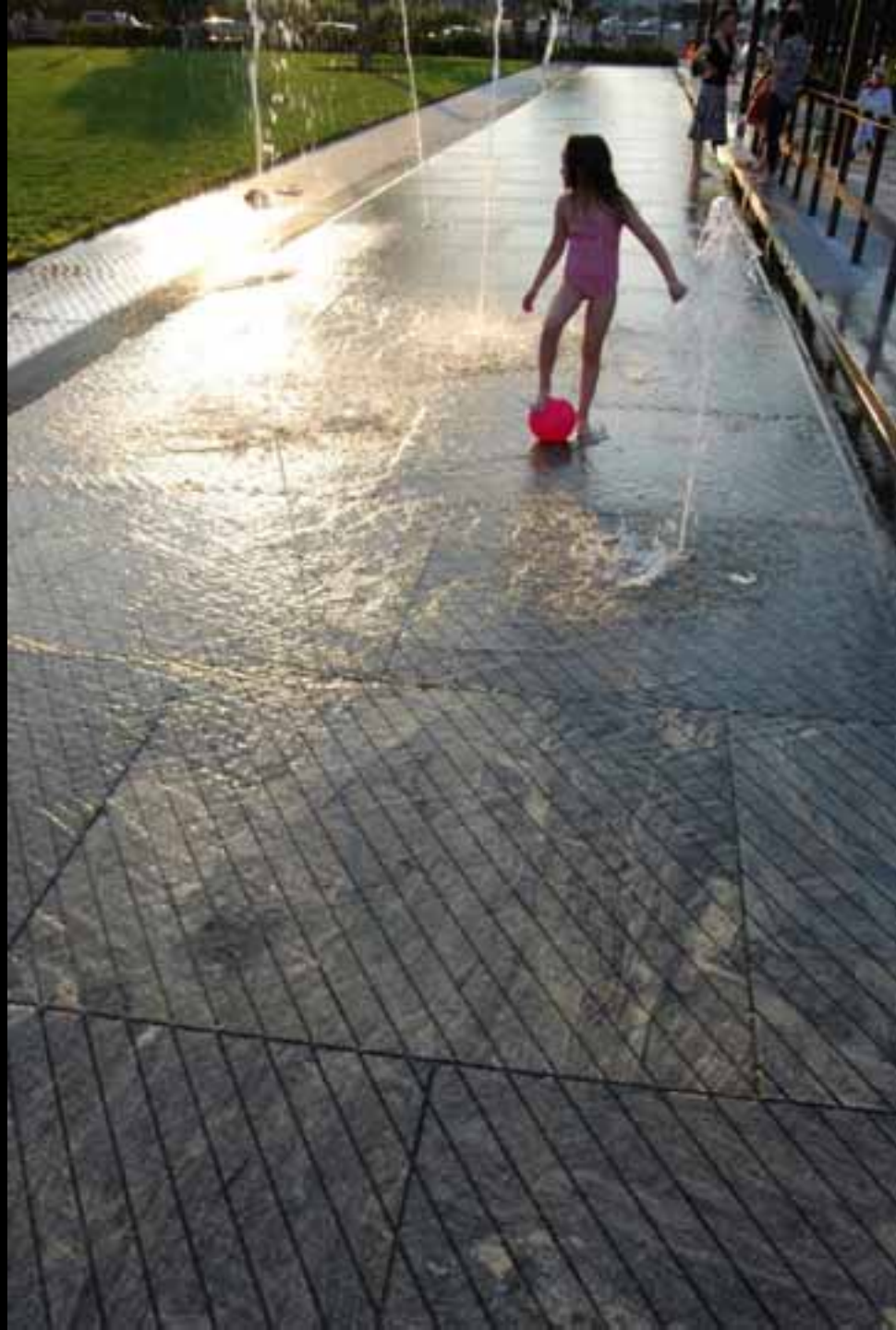
Image credit: Charles Mayer



Image credit: Christian Phillips















NO  
PARKING  
POLICE  
ENFORCE  
NO 11 15

CRE







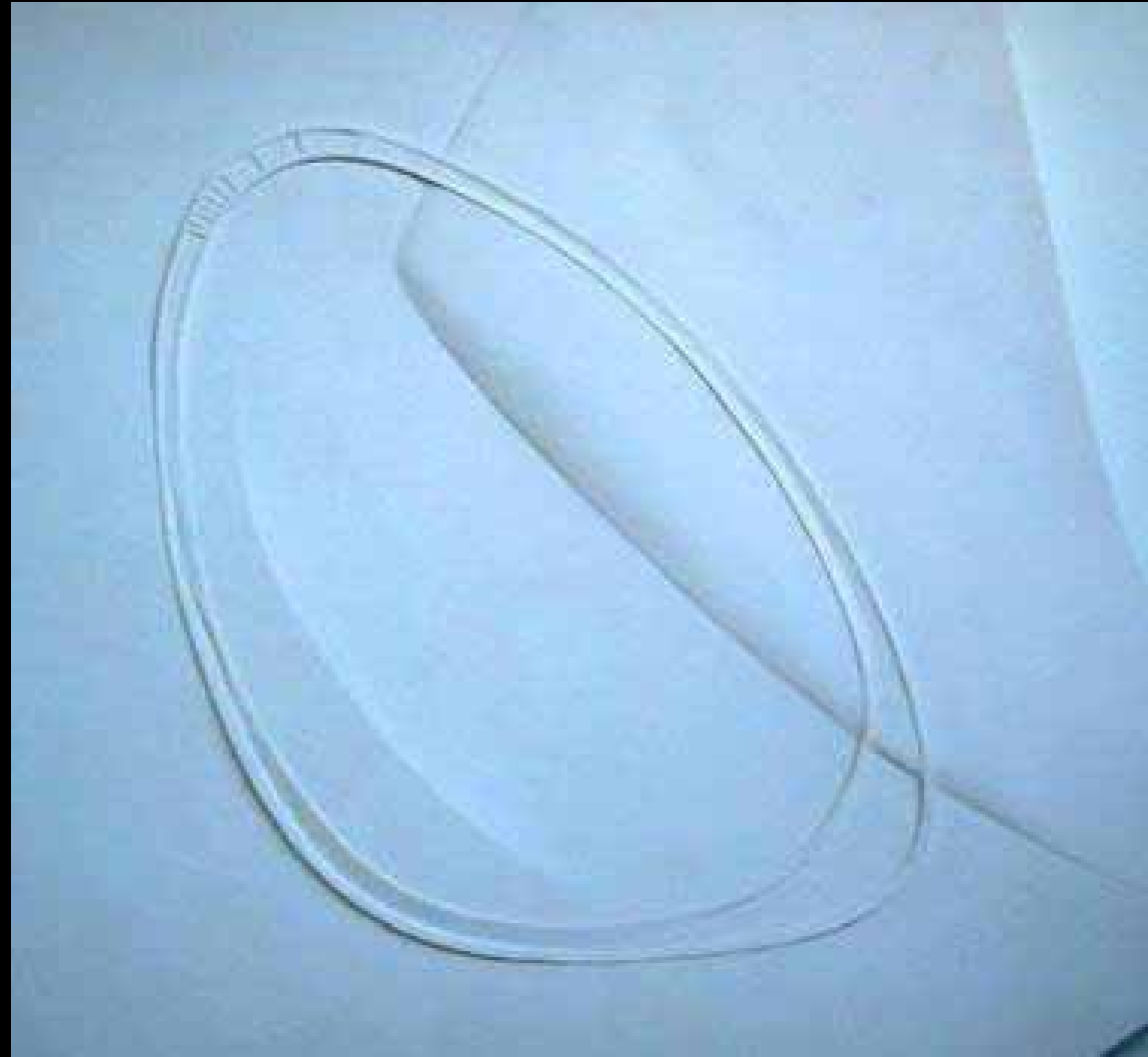
# Diana, Princess of Wales Memorial Fountain

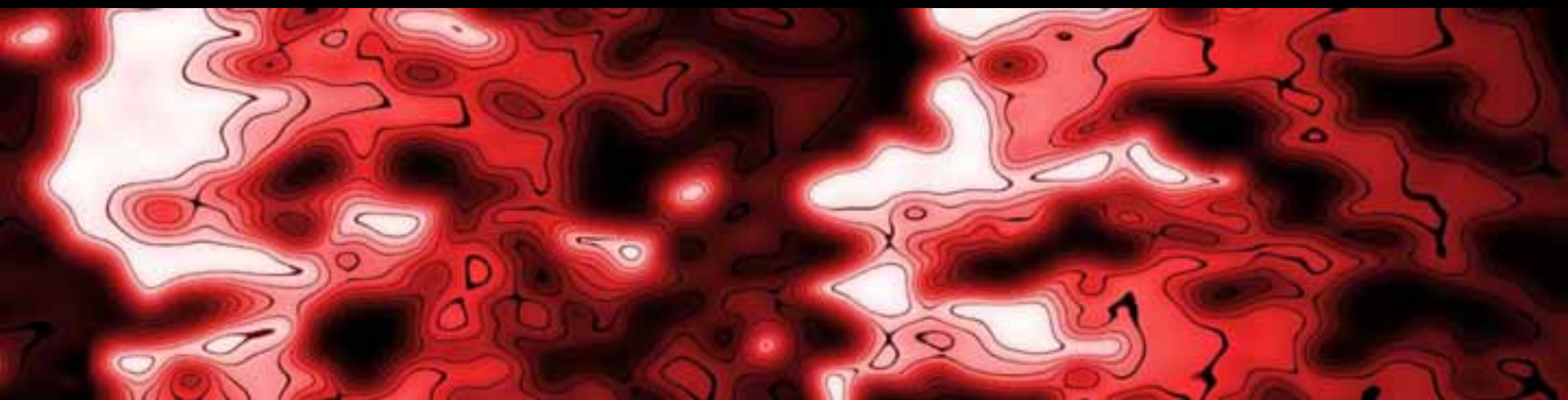
Hyde Park, London

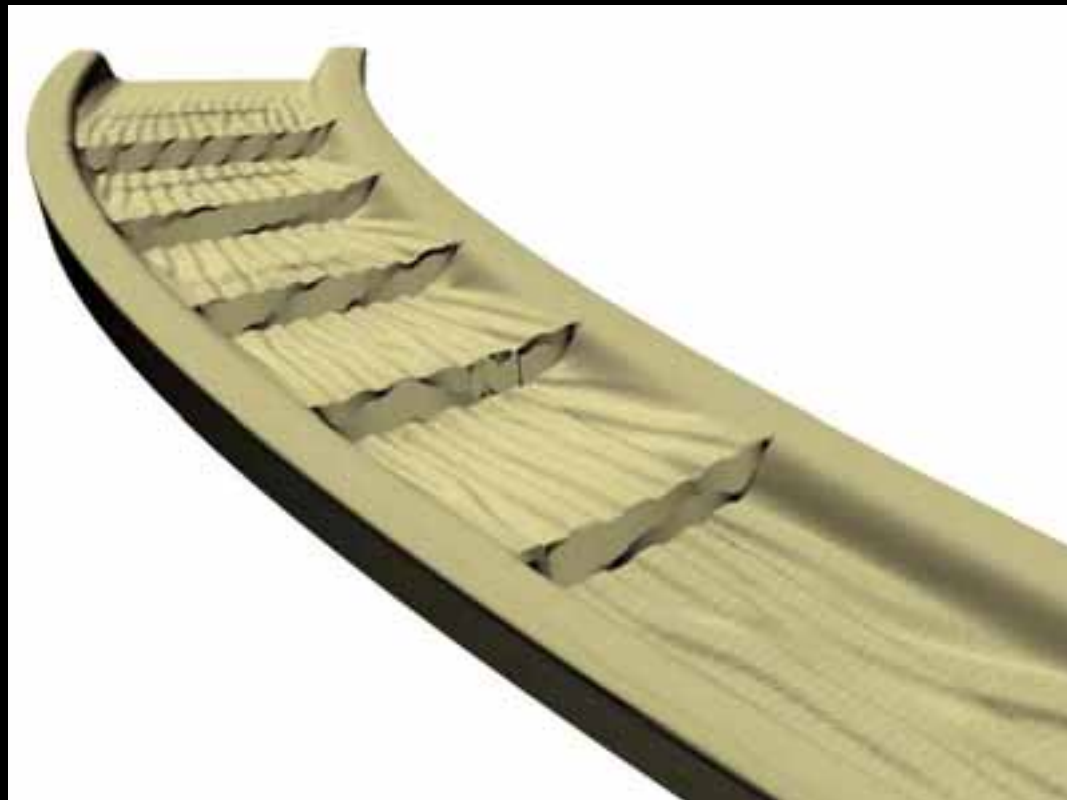
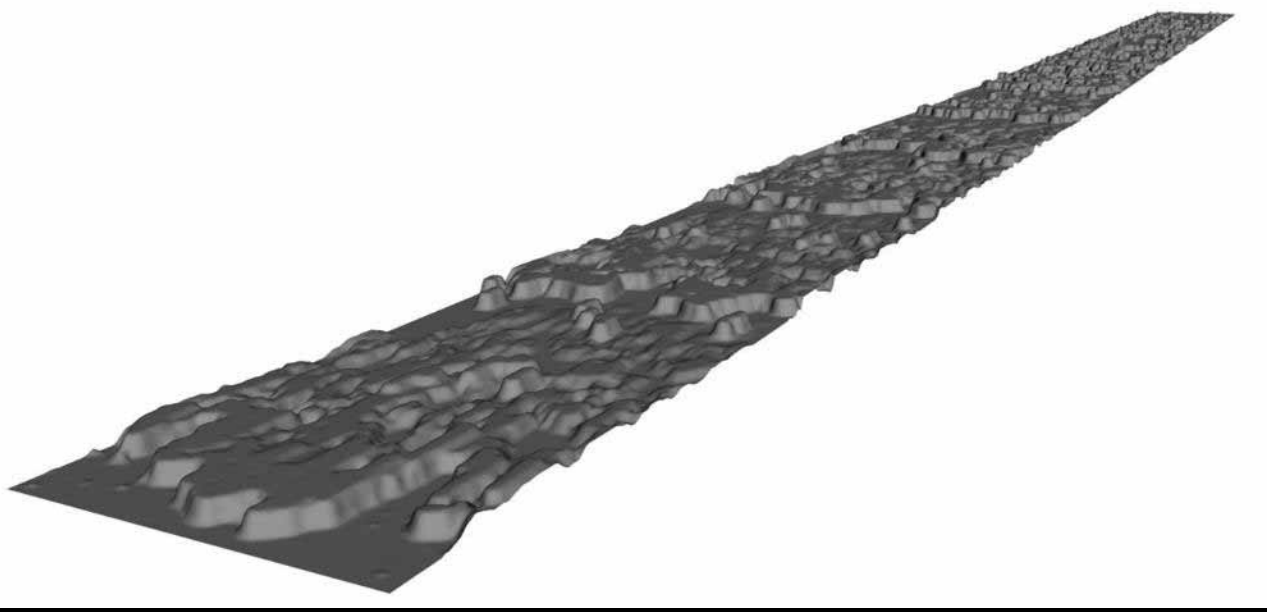




reaching out / letting in





























Yakima





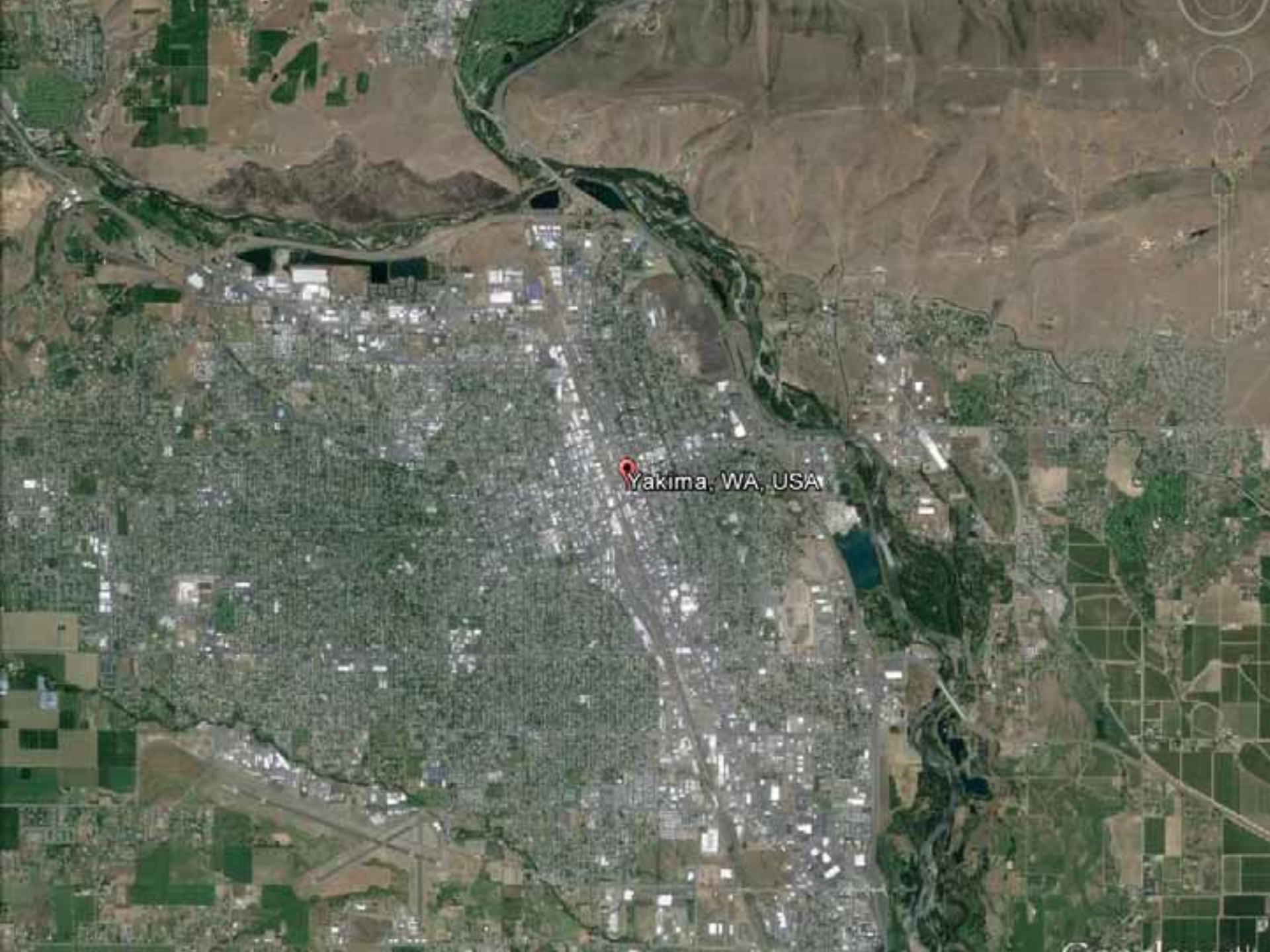
Yakima, WA, USA











Yakima, WA, USA



HOTEL WASHINGTON

BANK

SUITS  
\$12

PANG

EMPIRE

11302  
MARCEL CORTIS





# Hopfest



# Cinco de Mayo





## Next Steps:

Please fill out and return your questionnaire.

Meeting #2 – May  
Site Analysis & Program

Meeting #3 – July  
Concepts

Meeting #4 – August  
Concept Refinement

Meeting #5 – September  
Preferred Concept

Thank you

GUSTAFSON GUTHRIE NICHOL  
Graham Baba Architects