



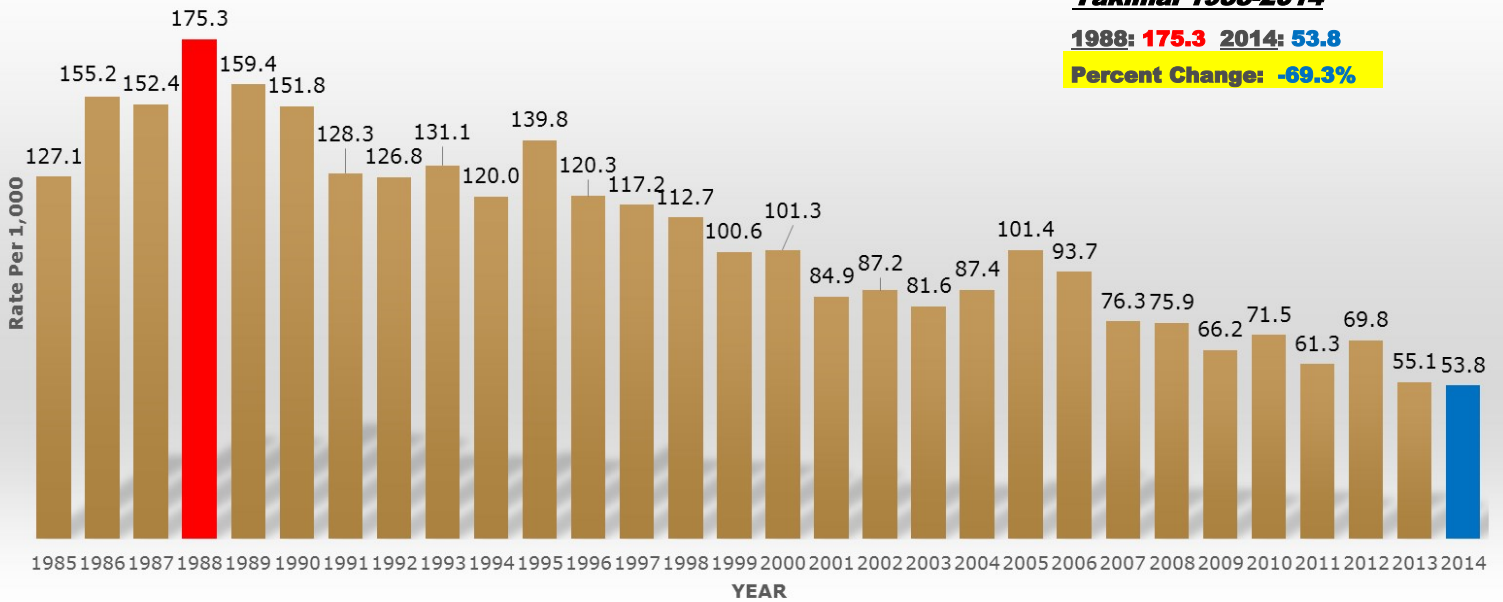
# YAKIMA POLICE DEPARTMENT

February 2015

## Part I Crime Rate: 1985-2014

### City of Yakima PD

#### Total Part I Rate per 1,000:



#### Yakima: 1988-2014

1988: **175.3** 2014: **53.8**

Percent Change: **-69.3%**

### YPD/SPD Rate Comparison

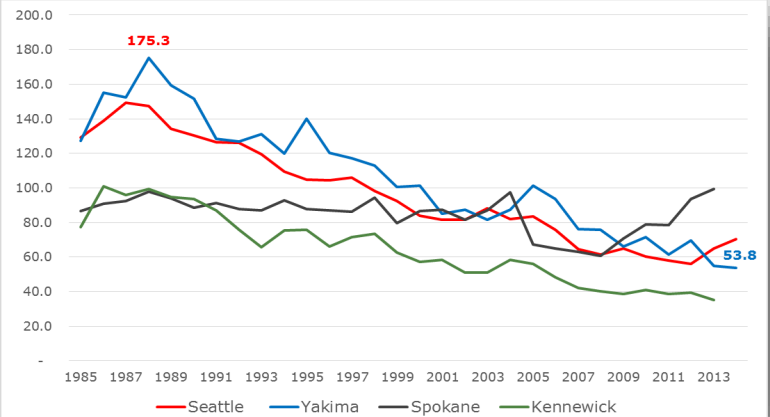
#### Total Part I: Per 1,000



#### \*Percent Change:

Yakima: **-21.7%** ↓ Seattle: **25.7%** ↑  
3-Year Comparison

### Yakima, Kennewick, Spokane, Seattle



#### \*Percent Change:

Yakima: **-69.3** Kennewick: **-64.6% (13)**  
Seattle: **-52.1%** Spokane: **1.4% (13)**  
1988-2014\*

#### Report Notes:

- The City of Yakima has had a **decrease of 69.3% in Part I Crimes since 1988**. The City reached its peak crime rate in 1988 with over **175 crimes per 1,000** and our lowest rate this past year (2014) with **53.8 per 1,000**. What is particularly significant during this time is that our population has increased by over 91% while our raw count of index crimes have decreased by 41%.
- \*Note\* - Part I Crimes consist of 8 Crimes: Homicide, Forcible Rape, Robbery, Aggravated Assault, Burglary, Motor Vehicle Theft, Larceny/Theft Offenses, and Arson. All Totals, Percent Change, and Rates contained in this report reflect counts aggregated by these categories.



# YAKIMA POLICE DEPARTMENT

February 2015

## Crime Statistics Summary

### Quick Notes:

Counts, Percent Change and other useful notations

### Part I Offense Rate Per 1,000:

**2012—69.8 (6415)**

**2013 - 55.1 (5135)**

**2014 - 53.8 (5017)**

**13-14 Change: - 2.30%**

**12-14 Change: -21.79%**

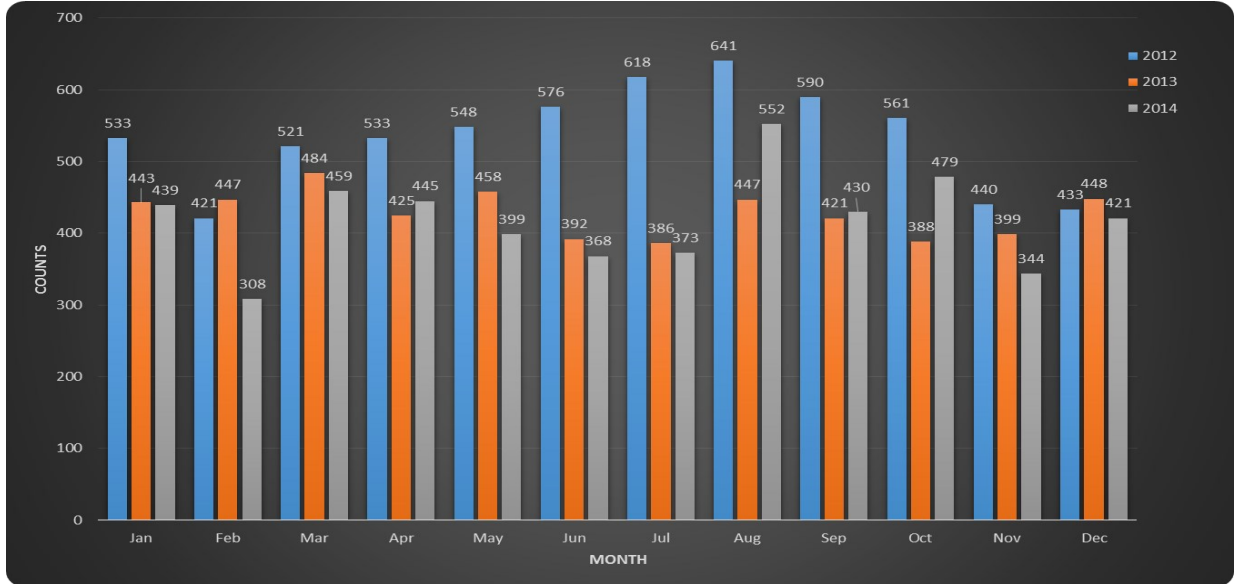
### Report Summary

Data for this report were obtained from WASPC UCR Archive, City Websites, and Yakima PD Spillman RMS on 2/10/2014. 2014 Data for Kennewick and Spokane were not available for analysis



Prepared by:  
CA Joseph Brown  
On: 2/10/2015  
joe.brown@yakimawa.gov

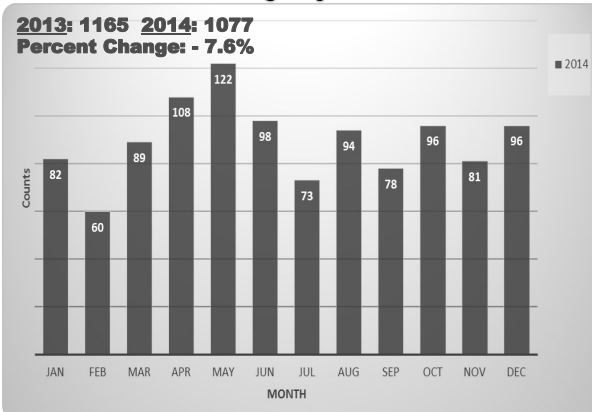
## Total Part I Offenses: 2012-2014



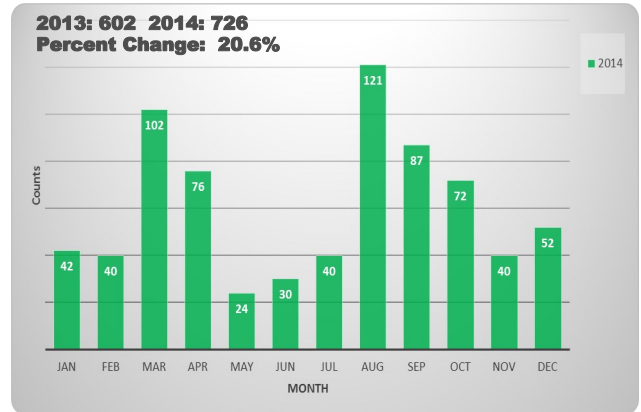
## Report Summary:

Crime	2012	2013	2014	13-14 % Change	12-14% Change
ROBBERY	156	149	115	-22.80%	-26.30%
ARSON	11	14	39	178.60%	254.50%
AGGRAVATED ASSAULT	267	212	197	-7.10%	-26.20%
BURGLARY / BREAKING AND ENTERING	1580	1165	1077	-7.60%	-31.80%
HOMICIDE OFFENSES	6	9	2	-77.80%	-66.70%
LARCENY/THEFT OFFENSES	3202	2953	2830	-4.20%	-11.60%
MOTOR VEHICLE THEFT	1139	602	726	20.60%	-36.30%
FORCIBLE RAPE	54	31	31	0.00%	-42.59%
<b>Grand Total</b>	<b>6415</b>	<b>5135</b>	<b>5017</b>	<b>-2.30%</b>	<b>-21.79%</b>

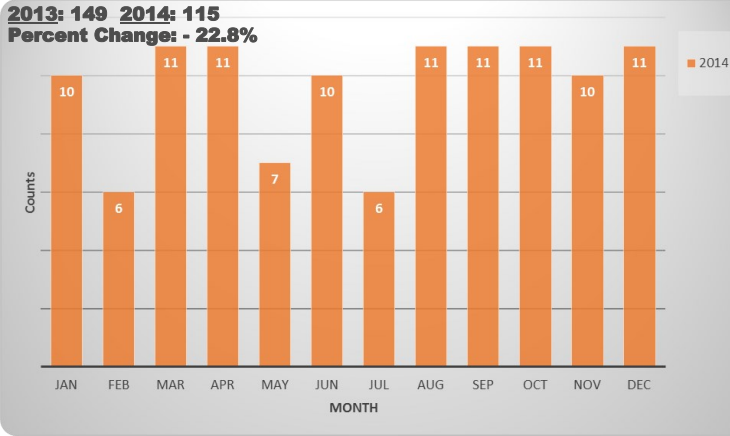
### Burglary



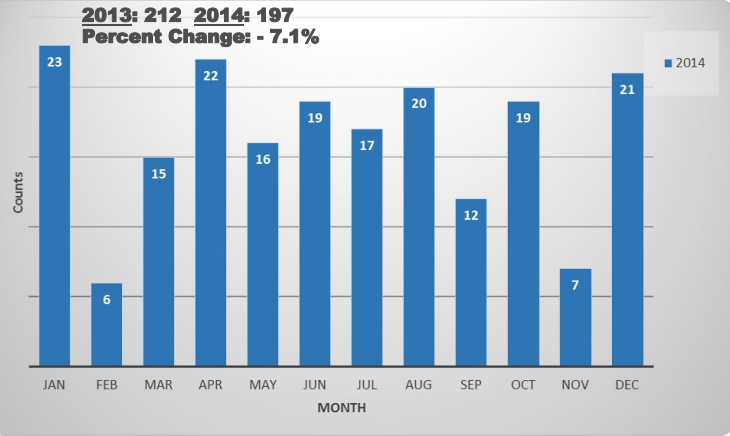
### MV Theft



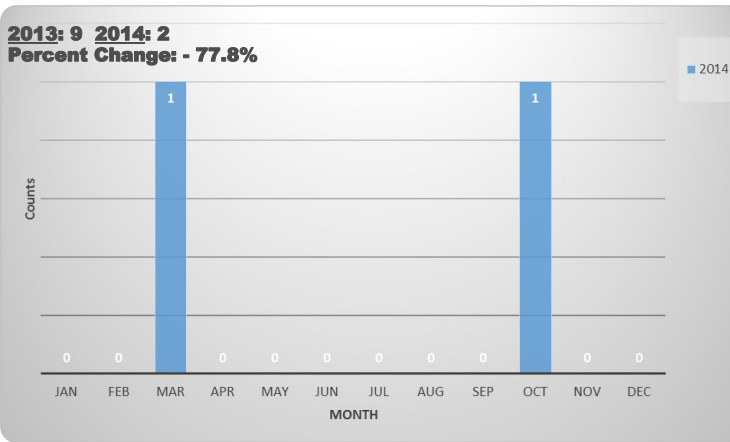
### Robbery



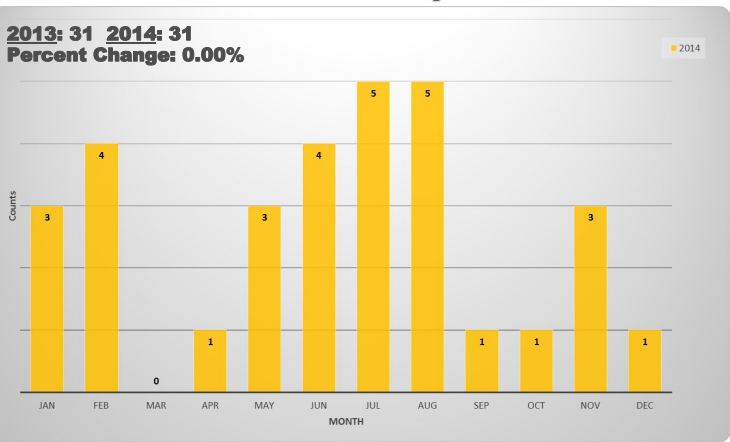
### Aggravated Assault



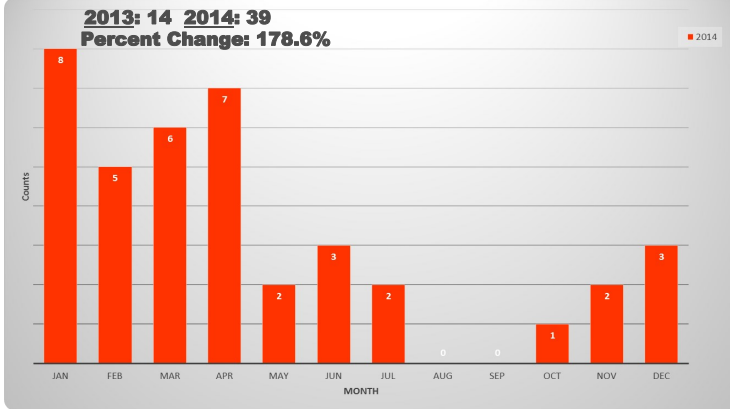
### Homicide



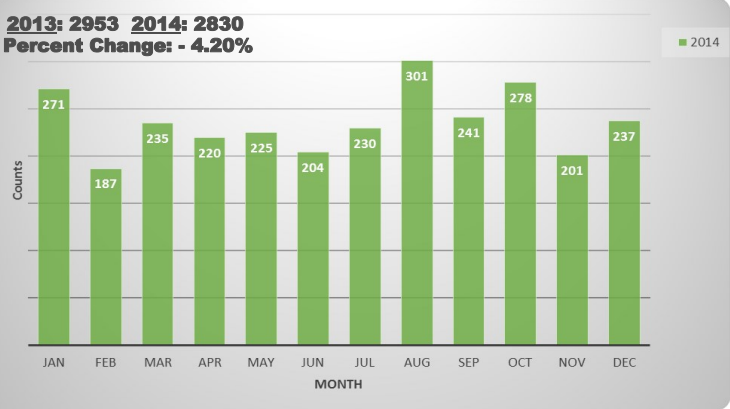
### Forcible Rape



### Arson



### Larceny/Theft Offenses



### Quick Notes:

Some additional considerations for above individual crimes are discussed below:

⇒ Although Motor Vehicle Theft is up for 2014, the 2012 (n=1,139) to 2014 (n=726) counts still show a significant decrease of 36%. (Stolen/Recovered duplicate coding within Spillman has shown to drive up counts higher than reality. This issue is being addressed at the officer level) August (n=121) was abnormally high in 2014, accounting for much of the increase in the yearly count. (2013- 28; 2014- 121)



Prepared by:  
CA Joseph Brown  
On: 2/10/2015  
joe.brown@yakimawa.gov

