



OFFICE OF THE CITY CLERK
129 North Second Street
Yakima, Washington 98901
Phone (509) 575-6037 • Fax (509) 576-6614

CITY OF YAKIMA
NOTICE OF PUBLIC HEARING
Anderson Estates South Preliminary Plat

NOTICE IS HEREBY GIVEN that the Yakima City Council will conduct a "Closed Record" public hearing on **Tuesday, October 3, 2017 at 6:30 p.m.**, or as soon thereafter, in the Council Chambers at City Hall located at 129 North 2nd Street, Yakima, WA to consider the Yakima Planning Commission's recommendation on the application submitted by Cottonwood Partners, LLC for a 40-lot preliminary plat known as Anderson Estates South, located in the vicinity of Ahtanum Road and S. 64th Avenue.

Closed Record Hearing means the public is invited to testify on the existing Hearing Examiner's records, but will not be allowed to introduce any new information.

Dated this 22nd day of September, 2017.

Sonya Claar Tee, CMC
City Clerk

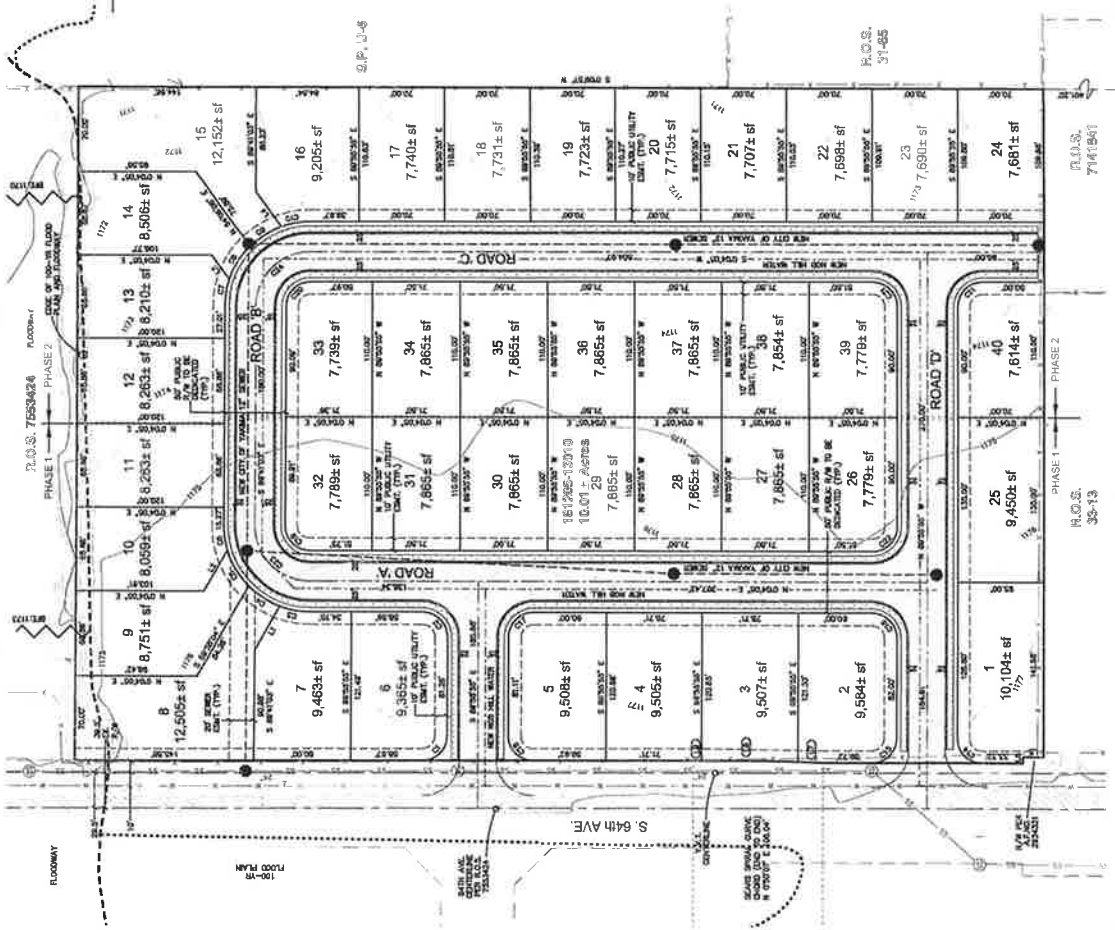
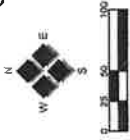
PRELIMINARY PLAT OF "ANDERSON ESTATES SOUTH"

(A PORTION OF THE NORTHEAST 1/4, NORTHEAST 1/4,
SECTION 5, TOWNSHIP 12 NORTH, RANGE 18 EAST, W.M.)

RECEIVED

JUN 8 2017

CITY OF YAKIMA
PLANNING DEPARTMENT



LINE TABLE

| LINE | BEARING | LENGTH |
|------|---------------|--------|
| L1 | N 89°20'44" W | 40.68 |
| L2 | N 89°20'44" W | 36.87 |
| L3 | N 84°08'09" E | 24.87 |
| L4 | N 84°08'09" E | 32.06 |
| L5 | S 00°02'27" E | 16.84 |
| L6 | N 89°58'27" E | 5.00 |
| L7 | N 01°11'07" E | 20.24 |
| L8 | S 02°03'27" E | 76.74 |
| L9 | N 89°09'49" W | 7.00 |

CURVE TABLE

| CURVE | DELTA | RADIUS | LENGTH | CHORD | DIRECTION | CHORD LENGTH |
|-------|------------|--------|--------|-----------|---------------|--------------|
| C1 | 89°20'44" | 20.00 | 21.24 | 31.42 | N 89°20'44" E | 28.33 |
| C2 | 89°20'44" | 20.00 | 21.24 | 31.42 | N 89°20'44" E | 28.33 |
| C3 | 207°14'02" | 70.00 | 24.87 | 51.074527 | S 10°14'02" W | 24.74 |
| C4 | 207°14'02" | 70.00 | 32.06 | 52.947227 | S 10°14'02" W | 30.03 |
| C5 | 359°20'44" | 70.00 | 34.84 | 53.872227 | S 89°20'44" W | 34.35 |
| C6 | 18°02'27" | 70.00 | 22.15 | 37.981137 | S 18°02'27" W | 19.40 |
| C7 | 18°02'27" | 70.00 | 22.15 | 37.981137 | S 18°02'27" W | 19.40 |
| C8 | 281°11'07" | 70.00 | 22.72 | 42.871107 | N 89°11'07" W | 22.03 |
| C9 | 281°11'07" | 70.00 | 22.72 | 42.871107 | N 89°11'07" W | 22.03 |
| C10 | 243°02'27" | 70.00 | 24.24 | 43.872227 | N 87°02'27" W | 24.11 |
| C11 | 243°02'27" | 70.00 | 24.24 | 43.872227 | N 87°02'27" W | 24.11 |
| C12 | 89°20'44" | 20.00 | 21.24 | 31.42 | S 89°20'44" W | 28.33 |
| C13 | 89°20'44" | 20.00 | 21.24 | 31.42 | S 89°20'44" W | 28.33 |
| C14 | 89°20'44" | 20.00 | 21.24 | 31.42 | S 89°20'44" W | 28.33 |
| C15 | 89°20'44" | 20.00 | 21.24 | 31.42 | S 89°20'44" W | 28.33 |
| C16 | 89°20'44" | 20.00 | 21.24 | 31.42 | S 89°20'44" W | 28.33 |
| C17 | 89°20'44" | 20.00 | 21.24 | 31.42 | S 89°20'44" W | 28.33 |
| C18 | 89°20'44" | 20.00 | 21.24 | 31.42 | S 89°20'44" W | 28.33 |
| C19 | 89°20'44" | 20.00 | 21.24 | 31.42 | S 89°20'44" W | 28.33 |
| C20 | 89°20'44" | 20.00 | 21.24 | 31.42 | S 89°20'44" W | 28.33 |
| C21 | 89°20'44" | 20.00 | 21.24 | 31.42 | S 89°20'44" W | 28.33 |
| C22 | 89°20'44" | 20.00 | 21.24 | 31.42 | S 89°20'44" W | 28.33 |
| C23 | 89°20'44" | 20.00 | 21.24 | 31.42 | S 89°20'44" W | 28.33 |
| C24 | 89°20'44" | 20.00 | 21.24 | 31.42 | S 89°20'44" W | 28.33 |

PARCEL NO. 181205-13010

SHEET 2 of 2

COTTONWOOD PARTNERS
PLAT OF ANDERSON ESTATES SOUTH
CITY OF YAKIMA, YAKIMA COUNTY, WASHINGTON

JOB NUMBER: 18144
DATE: 6-1-17
FILE NAMES: 18144.dwg
DRAWING: 18144.dwg

REVIEWED BY: MRS. ALTHA TOP
ENTERED BY: []
DATE: []
REVISION: []



2803 River Road
Yakima, WA 98902
509.966.7000
Fax 509.965.3800
www.hilavt.com



PRELIMINARY PLAT

