



OFFICE OF THE CITY CLERK
129 North Second Street
Yakima, Washington 98901
Phone (509) 575-6037 • Fax (509) 576-6614

**CITY OF YAKIMA
NOTICE OF CLOSED RECORD PUBLIC HEARING
Golden Ridge Phase 2 Preliminary Plat**

NOTICE IS HEREBY GIVEN that the Yakima City Council will conduct a Closed Record Public Hearing to consider the Planning Commission's recommendation regarding preliminary long plat approval of Golden Ridge Phase 2, submitted by Apple Tree Construction. The plat will subdivide approx. 2.18 acres into 8 single-family lots and two tracts in the R-1 zoning district located at 9203 Coolidge Rd.

Said closed record public hearing will be held on **Tuesday, November 15, 2022, at 6:00 p.m.**, or soon thereafter, in the Council Chambers at City Hall located at 129 N. 2nd Street, Yakima, WA. *Closed Record Hearing* means the public is invited to testify on the existing Planning Commission's records but will not be allowed to introduce any new information.

Any citizen wishing to comment on the amendments is welcome to attend the public meeting in person or via Zoom (information on the agenda). The City Council agenda will be posted online at: <https://www.yakimawa.gov/council/agendas-and-minutes/> Please contact City Planning for additional information at 509-575-6183.

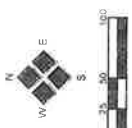
Dated this 28th day of October, 2022.

Sonya Claar Tee, CMC
City Clerk

PRELIMINARY PLAT OF "GOLDEN RIDGE PHASE 2"

(A PORTION OF THE SW 1/4, SECTION 31, TOWNSHIP
13 NORTH, RANGE 18 EAST, W.M.)

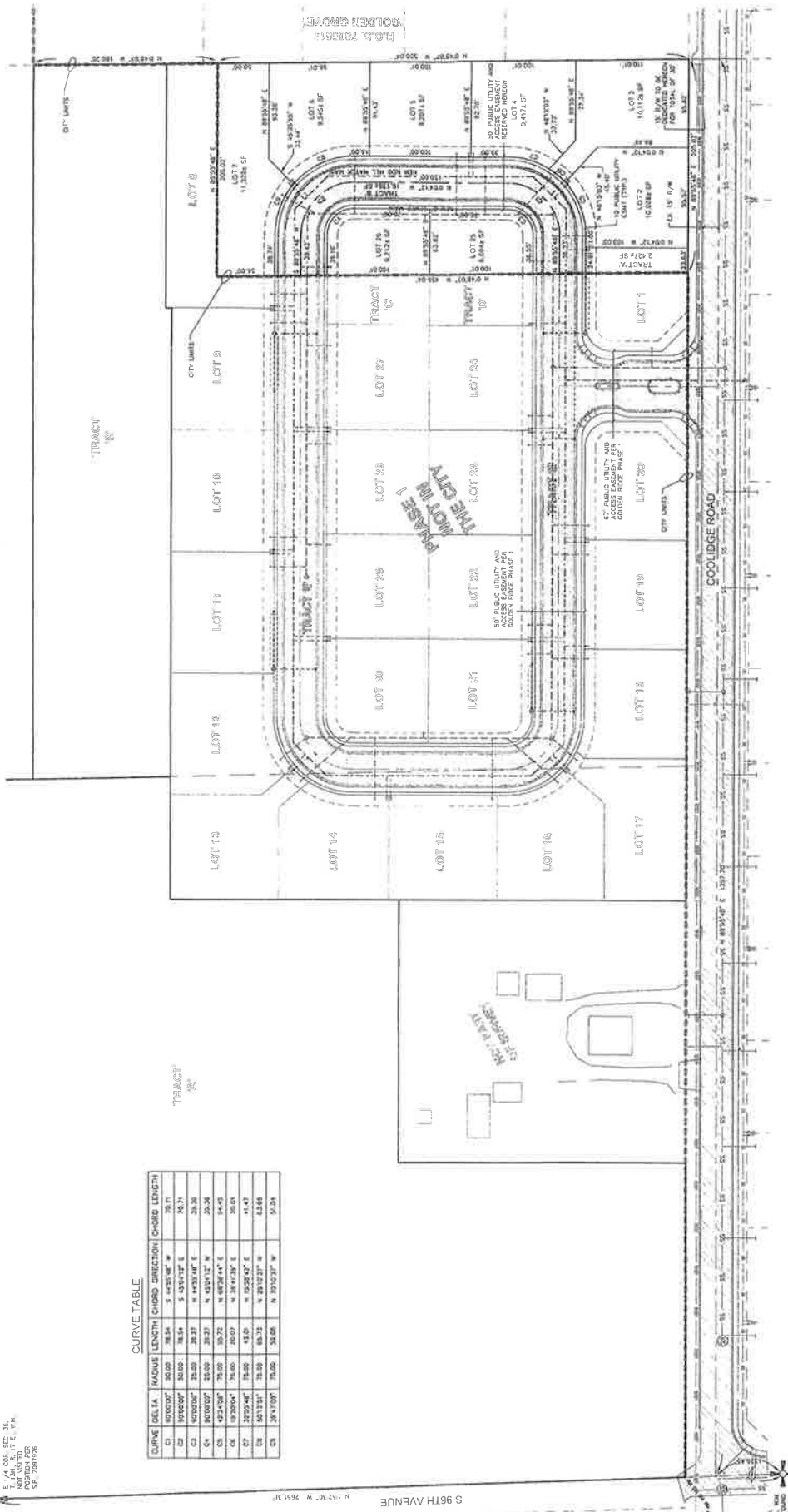
RECEIVED
MAY 16 2022
CITY OF YAKIMA
PLANNING DIV.



E 1/4 COR. SEC. 31,
NOTED TO BE
NOTED TO BE
NOTED TO BE
NOTED TO BE

CURVE TABLE

CURVE	DELTA	RADIUS	LENGTH	CURVED DIRECTION	CHORD LENGTH	CHORD BEARING
C1	180.000°	50.00	31.416	S 45.000° W	50.00	135.000°
C2	180.000°	50.00	31.416	S 45.000° E	50.00	225.000°
C3	180.000°	50.00	31.416	N 45.000° E	50.00	315.000°
C4	180.000°	50.00	31.416	N 45.000° W	50.00	045.000°
C5	180.000°	50.00	31.416	S 45.000° W	50.00	135.000°
C6	180.000°	50.00	31.416	S 45.000° E	50.00	225.000°
C7	180.000°	50.00	31.416	N 45.000° E	50.00	315.000°
C8	180.000°	50.00	31.416	N 45.000° W	50.00	045.000°
C9	180.000°	50.00	31.416	S 45.000° W	50.00	135.000°
C10	180.000°	50.00	31.416	S 45.000° E	50.00	225.000°



2803 River Road
Yakima, WA 98902
509-966-7000
Fax 509-965-3800
www.hilacivil.com

JOB NUMBER: DATE: 2021-12-22
FILE NAME: 2021-12-22.dwg
DRAWING: 80354.dwg
CHECKED BY: MRH/TDF
ENTERED BY: AJH

REVISION

NO.	DATE	DESCRIPTION

APPLE TREE CONSTRUCTION CO
GOLDEN RIDGE PLAT PHASE 2
CITY OF YAKIMA, YAKIMA COUNTY, WASHINGTON

PRELIMINARY PLAT

PARCEL NO. 181331-32006

SHEET 2 of 2

Project Name: APPLE TREE CONSTRUCTION CO LLC / "PLAT OF GOLDEN RIDGE"

Site Address: 9203 COOLIDGE RD

File Number(s): PLP#003-22, SEPA#010-22

Proposal: Preliminary long plat to subdivide approximately 2.18 acres into 6 single-family lots and two tracts in the R-1 zoning district.



VICINITY MAP



Map Disclaimer: Information shown on this map is for planning and illustration purposes only. The City of Yakima assumes no liability for any errors, omissions, or inaccuracies in the information provided or for any action taken, or action not taken by the user in reliance upon any maps or information provided herein.
Date Created: 5/17/2022

