



OFFICE OF THE CITY CLERK  
129 North Second Street  
Yakima, Washington 98901  
Phone (509) 575-6037 • Fax (509) 576-6614

**CITY OF YAKIMA  
NOTICE OF PUBLIC MEETING  
Washington Heights Final Plat**

NOTICE IS HEREBY GIVEN that the Yakima City Council will conduct a public meeting to consider final plat approval for Phase 4 of Washington Heights, submitted by Hayden Homes. The plat of Washington Heights Phase 4 is a 20-lot subdivision located in the vicinity of 78<sup>th</sup> Avenue and Whatcom Avenue.

The public meeting will be held on **Tuesday, July 11, 2017 at 6:30 p.m.**, or as soon thereafter as the matter may be heard, in the Council Chambers at City Hall located at 129 North 2nd Street, Yakima, WA. Any citizen wishing to comment on this request is welcome to attend the public meeting or contact the City Council in the following manner:

- 1) Send a letter via regular mail to "Yakima City Council, 129 N. 2<sup>nd</sup> Street, Yakima, WA 98901"; or,
- 2) E-mail your comments to [citycouncil@yakimawa.gov](mailto:citycouncil@yakimawa.gov) Include in the e-mail subject line, "Washington Heights Final Plat." Please also include your name and mailing address.

Dated this 23<sup>rd</sup> day of June, 2017.

Sonya Claar Tee  
City Clerk

Mailed June 23, 2017.

# WASHINGTON HEIGHTS - PHASE 4

## FINAL PLAT

LOCATED IN THE SW 1/4 OF THE NW 1/4 & THE NW 1/4 OF THE SW 1/4 OF SECTION 32, TOWNSHIP 13 NORTH, RANGE 18 EAST OF THE WILLAMETTE MERIDIAN, CITY OF YAKIMA, YAKIMA COUNTY, WASHINGTON, PARCEL #18133233011



Scale 1" = 60'

- LEGEND**
- INDICATES SET 3" BRASS CAP WITH PLUMB IN CONCRETE CASE AND COVER STAMPED "48318 2017"
  - SET 5/8" x 3/8" IRON BEAR WITH YELLOW PLASTIC CAP STAMPED "MATTARAZZO 48918" IN THIS PLAT
  - FOUND (FD.) & HELD 2" ALUM. CAP STAMPED 13 44333 PER (R1) & (R2)
  - FOUND (FD.) SURVEY MONUMENT AS DESCRIBED FROM CALCULATED POSITION LINE LESS OTHERWISE NOTED
  - FOUND (FD.) BEAR W/ CAP PER (R1), (R2) OR (R4) WITHIN 0.1' FROM CALCULATED POSITION LINE
  - CALCULATED POINT - NOT FOUND OR SET
  - DEMOTES RECORD DATA, PER SURVEY REFERENCE NOTED
  - EXTG RIGHT-OF-WAY
  - EXTG RIGHT-OF-WAY CENTERLINE
  - EXTG ADJACENT LOT LINE
  - EXTG EASEMENT
  - PLAT BOUNDARY
  - RIGHT-OF-WAY HEREBY DECEDED BY THIS PLAT
  - RIGHT-OF-WAY CENTERLINE
  - EASEMENT DEDICATED BY THIS PLAT
  - NEW LOT LINE

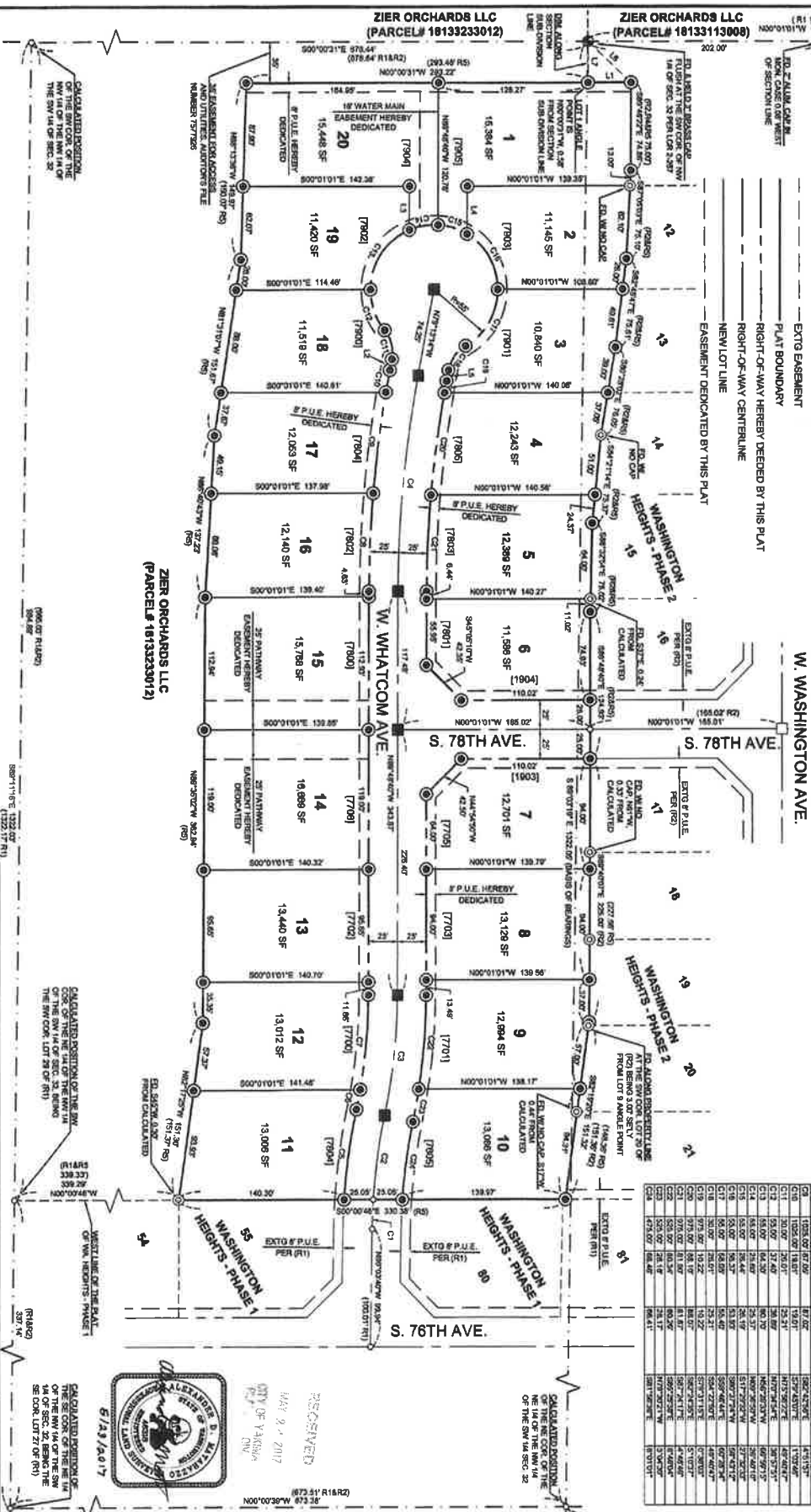
**BASIS OF BEARINGS:**  
BEARING OF A BEARING E ALONG THE SOUTH LINE OF THE NW 1/4 OF SECTION 32, T13N, R18E OF THE WM, CITY OF WASHINGTON PER RECORD PER BETWEEN FOUND MONUMENTS AT THE WEST 1/4 AND CENTER 1/4 CORNERS OF 32ND SECTION 32.

**LINE TABLE**

LINE NUMBER	LINE BEARING	LINE LENGTH (FEET)	BEARING	LENGTH (FEET)
1	N 89° 52' 00" W	104.87	S 89° 52' 00" E	104.87
2	N 89° 52' 00" W	104.87	S 89° 52' 00" E	104.87
3	N 89° 52' 00" W	104.87	S 89° 52' 00" E	104.87
4	N 89° 52' 00" W	104.87	S 89° 52' 00" E	104.87
5	N 89° 52' 00" W	104.87	S 89° 52' 00" E	104.87
6	N 89° 52' 00" W	104.87	S 89° 52' 00" E	104.87
7	N 89° 52' 00" W	104.87	S 89° 52' 00" E	104.87
8	N 89° 52' 00" W	104.87	S 89° 52' 00" E	104.87
9	N 89° 52' 00" W	104.87	S 89° 52' 00" E	104.87
10	N 89° 52' 00" W	104.87	S 89° 52' 00" E	104.87
11	N 89° 52' 00" W	104.87	S 89° 52' 00" E	104.87
12	N 89° 52' 00" W	104.87	S 89° 52' 00" E	104.87
13	N 89° 52' 00" W	104.87	S 89° 52' 00" E	104.87
14	N 89° 52' 00" W	104.87	S 89° 52' 00" E	104.87
15	N 89° 52' 00" W	104.87	S 89° 52' 00" E	104.87
16	N 89° 52' 00" W	104.87	S 89° 52' 00" E	104.87
17	N 89° 52' 00" W	104.87	S 89° 52' 00" E	104.87
18	N 89° 52' 00" W	104.87	S 89° 52' 00" E	104.87
19	N 89° 52' 00" W	104.87	S 89° 52' 00" E	104.87
20	N 89° 52' 00" W	104.87	S 89° 52' 00" E	104.87
21	N 89° 52' 00" W	104.87	S 89° 52' 00" E	104.87
22	N 89° 52' 00" W	104.87	S 89° 52' 00" E	104.87
23	N 89° 52' 00" W	104.87	S 89° 52' 00" E	104.87
24	N 89° 52' 00" W	104.87	S 89° 52' 00" E	104.87
25	N 89° 52' 00" W	104.87	S 89° 52' 00" E	104.87
26	N 89° 52' 00" W	104.87	S 89° 52' 00" E	104.87
27	N 89° 52' 00" W	104.87	S 89° 52' 00" E	104.87
28	N 89° 52' 00" W	104.87	S 89° 52' 00" E	104.87
29	N 89° 52' 00" W	104.87	S 89° 52' 00" E	104.87
30	N 89° 52' 00" W	104.87	S 89° 52' 00" E	104.87

**CURVE TABLE**

STATION	CHORD BEARING	CHORD LENGTH	ARC BEARING	ARC LENGTH
1	N 89° 52' 00" W	104.87	S 89° 52' 00" E	104.87
2	N 89° 52' 00" W	104.87	S 89° 52' 00" E	104.87
3	N 89° 52' 00" W	104.87	S 89° 52' 00" E	104.87
4	N 89° 52' 00" W	104.87	S 89° 52' 00" E	104.87
5	N 89° 52' 00" W	104.87	S 89° 52' 00" E	104.87
6	N 89° 52' 00" W	104.87	S 89° 52' 00" E	104.87
7	N 89° 52' 00" W	104.87	S 89° 52' 00" E	104.87
8	N 89° 52' 00" W	104.87	S 89° 52' 00" E	104.87
9	N 89° 52' 00" W	104.87	S 89° 52' 00" E	104.87
10	N 89° 52' 00" W	104.87	S 89° 52' 00" E	104.87
11	N 89° 52' 00" W	104.87	S 89° 52' 00" E	104.87
12	N 89° 52' 00" W	104.87	S 89° 52' 00" E	104.87
13	N 89° 52' 00" W	104.87	S 89° 52' 00" E	104.87
14	N 89° 52' 00" W	104.87	S 89° 52' 00" E	104.87
15	N 89° 52' 00" W	104.87	S 89° 52' 00" E	104.87
16	N 89° 52' 00" W	104.87	S 89° 52' 00" E	104.87
17	N 89° 52' 00" W	104.87	S 89° 52' 00" E	104.87
18	N 89° 52' 00" W	104.87	S 89° 52' 00" E	104.87
19	N 89° 52' 00" W	104.87	S 89° 52' 00" E	104.87
20	N 89° 52' 00" W	104.87	S 89° 52' 00" E	104.87
21	N 89° 52' 00" W	104.87	S 89° 52' 00" E	104.87
22	N 89° 52' 00" W	104.87	S 89° 52' 00" E	104.87
23	N 89° 52' 00" W	104.87	S 89° 52' 00" E	104.87
24	N 89° 52' 00" W	104.87	S 89° 52' 00" E	104.87
25	N 89° 52' 00" W	104.87	S 89° 52' 00" E	104.87
26	N 89° 52' 00" W	104.87	S 89° 52' 00" E	104.87
27	N 89° 52' 00" W	104.87	S 89° 52' 00" E	104.87
28	N 89° 52' 00" W	104.87	S 89° 52' 00" E	104.87
29	N 89° 52' 00" W	104.87	S 89° 52' 00" E	104.87
30	N 89° 52' 00" W	104.87	S 89° 52' 00" E	104.87



**AUDITOR'S CERTIFICATE**  
FILED FOR RECORD THIS \_\_\_\_\_ DAY OF \_\_\_\_\_ 2017 AT \_\_\_\_\_ IN UNDER YAKIMA COUNTY  
AUDITOR'S FILE NO. \_\_\_\_\_ BY DEPUTY YAKIMA COUNTY AUDITOR

**SURVEY REFERENCES**  
(R1) WASHINGTON HEIGHTS - PHASE 1, PLAT N4N 7882413, BY BAKER  
(R2) WASHINGTON HEIGHTS - PHASE 2, PLAT N4N 7798510, BY BAKER  
(R3) WASHINGTON HEIGHTS - PHASE 3, PLAT N4N 7882976, BY TOMKINS  
(R4) STATUTORY WARRANTY DEED, N4N 782914  
(R5) STATUTORY WARRANTY DEED, N4N 782914

**PBS**  
Professional Business Services  
6115 Burton Blvd Ste E  
Yakima, WA 98901  
509.474.5119  
pbs.com

**CLIENT:** HANSON HOMES LLC  
**PROJECT NO.:** 439  
**SURVEYOR:** ALEXANDER D. MATARAZZO  
**DATE:** 09/29/17  
**SCALE:** 1" = 60'  
**CITY:** YAKIMA  
**TOWNSHIP:** 13 NORTH  
**RANGE:** 18 EAST  
**SHEET:** 2 OF 2



RESERVED  
MAY 2, 2017  
CITY OF YAKIMA  
BY \_\_\_\_\_



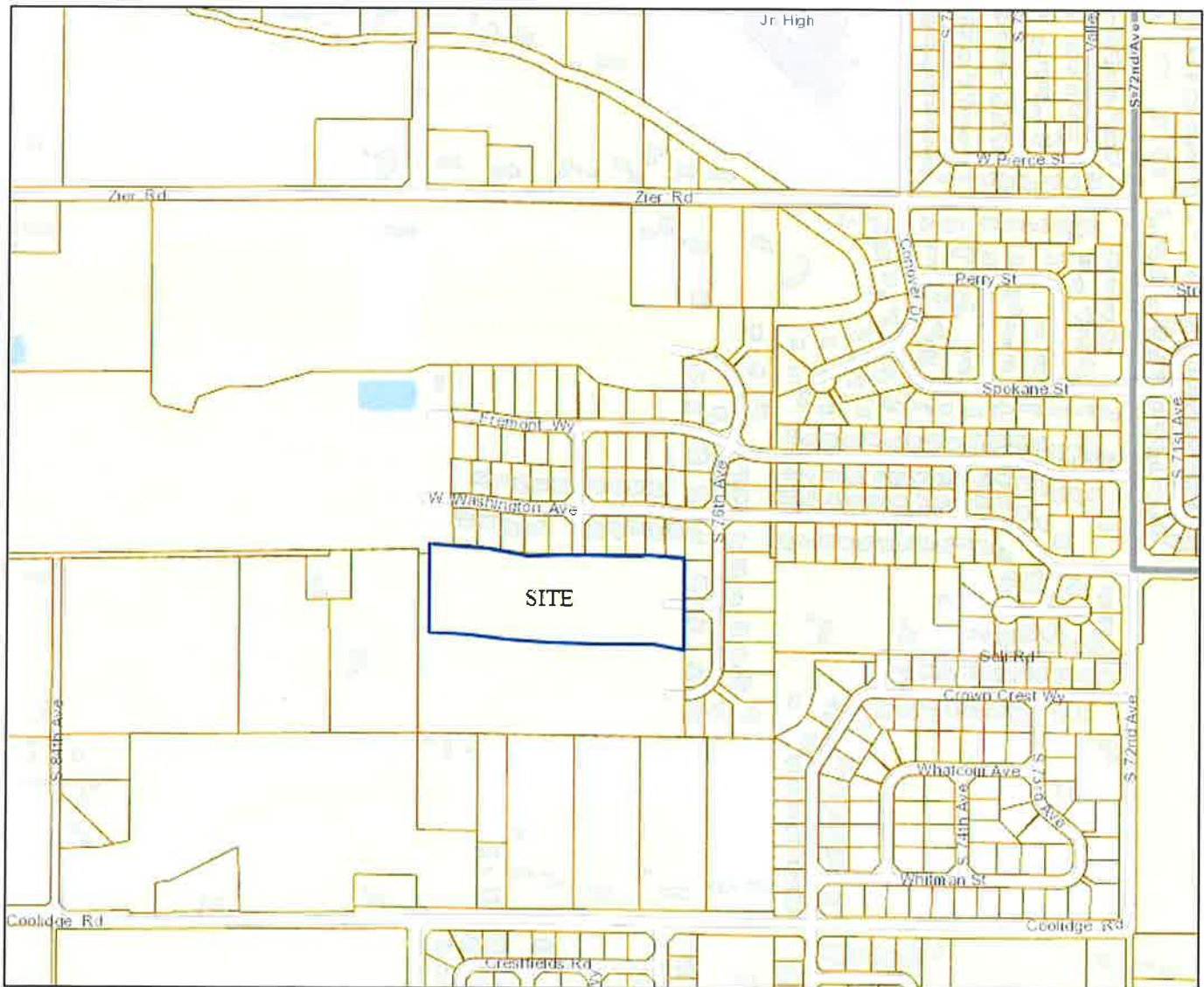
# VICINITY MAP



**File Number:** FLP#002-17

**Project Name:** Hayden Homes – “Washington Heights – Phase 4”

**Site Address:** Vic. of S 78<sup>th</sup> Ave & Whatcom Ave



**Proposal:** Final Long Plat approval for "Washington Heights - Phase 4" (PLP#002-10), subdividing a portion of the 88 acres of Washington Heights Phases 2 through 11 into 20 single-family residential lots in the R-1 zoning district.

Contact the City of Yakima Planning Division at (509) 575-6183

Map Disclaimer: Information shown on this map is for planning and illustration purposes only. The City of Yakima assumes no liability for any errors, omissions, or inaccuracies in the information provided or for any action taken, or action not taken by the user in reliance upon any maps or information provided herein.

Date Created: 6/21/2017

