

# URBAN FORESTRY MANAGEMENT PLAN

## RFQ/P #123410QP



Submitted by:

**ArborPro Inc.**

22605 E. La Palma Ave, Suite 509

Yorba Linda, CA 92887

O: 714.694.1924

F: 714-694-1981

[www.arborprousa.com](http://www.arborprousa.com)



## COVER LETTER

ArborPro, Inc. is the leading Urban Forestry consulting company offering comprehensive services in Urban Forest Management Plans, Tree Inventory, Tree Management Software, and Environmental Benefits reporting. With a strong focus on serving municipalities, universities, and federal government agencies nationwide, we have built a reputation as a trusted provider of high-quality Urban Forestry solutions. With over twenty years of experience and a client list of over 500 satisfied customers, ArborPro, Inc. has established itself as an industry leader.

ArborPro has been in business as a California corporation since 2003 and is licensed to do business in numerous states nationwide. Our office is located in Yorba Linda, CA. Our address is 22605 La Palma Ave, Ste 509, Yorba Linda, CA 92887, and our Tax ID Number is 30-0223853. Our phone number is 714-694-1924, and my direct email address is [khennig@arbormprousa.com](mailto:khennig@arbormprousa.com). We would like you to consider ArborPro for your Urban Forest Management Plan.

ArborPro Inc. is offering to create a Urban Forestry Management Plan for municipally managed trees for the City of Yakima. ArborPro's qualified consultants will review and evaluate existing ordinances and recommend updates to the City's Tree Maintenance Policies and Standards. After a review of the City's Tree Maintenance Policy and Standards, ArborPro will work with the City to develop an Urban Forest Master Plan for the care preservation, pruning, planting and removal of trees along streets and city-owned public areas. ArborPro understands there are multiple components to the tasks of this project. ArborPro will complete the tasks efficiently and effectively.

Our consulting team includes a Registered Consulting Arborist, ISA Certified Municipal Specialists, and Utility Specialists. Our team has combined experience creating Management Plans, tree inventory surveys, and managing municipal tree maintenance contracts. Many competitors will have a team of qualified report writers with book knowledge but not the actual on-the-ground management of tree maintenance activities. This should always be a consideration, especially when determining detailed and comprehensive planting initiatives and the proper species to plant in the climate associated with the City of Yakima. We have completed numerous projects in similar climate regions in Washington, including the City of Walla Walla, Sumner, Hoquiam, and Bonney Lake.

In addition to the field staff, our technical Team consists of Software Developers, IT Specialists, and GIS Analysts to support GIS consulting and development. GIS services range from simple map assembly to complex Urban Tree Canopy Assessments. The interdisciplinary mix of the ArborPro team rounds out our capabilities to satisfy all urban forest management demands.

Our team comprises full-time professional arborists with years of experience working cohesively, ensuring efficiency and accuracy in data collection. With a dedicated team of 45 professionals, including 20 ISA Certified Arborists (10 TRAQ certified), we pride ourselves on delivering superior results within any deadline.

We will assign Oscar Corvera as the Operations/Project Manager. He will be the City's direct contact for this project. Oscar can be reached directly by phone: 714-514-4485 or by email: [ocorvera@arborprousa.com](mailto:ocorvera@arborprousa.com).

ArborPro, Inc. will also provide the City of Yakima with licenses and logins to access our proprietary software suite, ArborPro, to manage tree data and support the City's urban forest, including daily management, routine and specialized maintenance scheduling, work history, and reporting. Our team's comprehensive quality assurance program allows us to provide our clients with superior data regardless of the project size.

ArborPro's team would like to partner with the City of Yakima for this project now and in the future to support and educate the residents of this gorgeous area about the significance and benefits of their urban forest. We have the experience and resources to execute this project's scope with great integrity and easily commit to the contract objectives.

Your consideration of my proposal is greatly appreciated.

Sincerely,



Keith Hennig  
President

# Table of Contents

<b>Cover Letter</b> .....	<b>2</b>
<b>Work Plan</b> .....	<b>5</b>
Kick-off Meeting .....	5
Urban Forest Management Plan .....	5
<b>Cost</b> .....	<b>7</b>
<b>Statement of Qualifications &amp; References</b> .....	<b>8</b>
<b>Project Experience</b> .....	<b>8</b>
City of Walla Walla, WA.....	8
City of Ashland, WI.....	9
City of Ogden, UT .....	10
<b>Work Samples</b> .....	<b>12</b>
City of Walla Walla, Washington.....	12
Village of Rockville Centre, New York .....	12
City of Poughkeepsie, New York.....	12
City of Ashland, Wisconsin.....	12
<b>Project Team</b> .....	<b>13</b>
Oscar Corvera, Operations Manager .....	13
Tim Clancy – Management Plan Author .....	14
Mason Burdick – Project Manager .....	15
Ken Greby – Species Specialist .....	15

## WORK PLAN

### KICK-OFF MEETING

The ArborPro staff will meet with the City of Yakima Project Manager and representatives for orientation and kick-off meetings. We will discuss project requirements, site conditions, roles, and responsibilities in the Kick-Off meeting. Meeting topics will include scope, daily operating procedures, detailed attribute definition, desired deliverables, and schedules and to document the process of developing the Management Plan.

### URBAN FOREST MANAGEMENT PLAN

ArborPro will develop a management plan to support the long-term vision of the City of Yakima. The Management Plan will address maintenance issues include topics outlined in the RFQ/P, and summarize the benefits of a robust urban canopy. Our team will meet with staff to discuss the Management and Maintenance Plan outline, delivery dates, meeting schedule, etc.

- **Review and Evaluation of Existing Ordinances**
- **Tree Maintenance Activities, Guidelines, and Specifications**
- **Invasive Species and Disease Identification and Mitigation Plan**
- **Cost Estimates and Site Specific Work Plans**
- **Evaluation of Funding and Recommendations to meet Goals**
- **Assessment and recommendation regarding the strategic planning for:**
  - Maintenance Objectives and recommended action, pruning rotations
  - Risk Assessment of current inventory, including assessment intervals
  - Emergency Response
  - Workload Prioritization
  - Pruning needs delineated by the following categories:
 

(1) Clearance	(4) Crown Clean
(2) Structural	(5) Sprouts
(3) Thinning	(6) Roots
  - Maintenance treatments prescribed for the tree population using the following attributes:
 

(1) Add Mulch	(5) Improve Soil Volume
(2) Grate Widening	(6) Repair Damage
(3) Increase Space	(7) Stake Tree
(4) Inspect/Monitor	(8) Water Tree



## **Review and Evaluation of Existing Ordinances**

ArborPro will review the City's Tree Ordinances, Policies and Standards. ArborPro will suggest updates based on the data and present findings and recommendations to the City Staff. Upon approval by the City, Standards and Policy can be revised to be consistent with the City's priorities. Our team does not only have the local tree inventory experience but our key management staff has decades of experience in tree maintenance operations. ArborPro Understands the benefit of local impact for an Urban Forest Management Plan. Both Oscar Corvera and Tim Clancy come from the municipal tree maintenance industry. Their experience running tree crews and provide safe and effective tree care for various local municipalities is essential in reviewing and establishing the city's tree maintenance policies.

## **Infrastructure Damage Solutions**

ArborPro, Inc. will create a report and propose solutions for any trees causing hardscape or infrastructure damage to sidewalks, curbs, and/or gutters. Our arborists will recommend the best solution for both the City and the tree's health.

## **Future Planting Sites**

The ArborPro Team will identify vacant planting sites and tree planting opportunities to increase the City's tree canopy coverage. Our Species Specialist will recommend tree species for Yakima Island's climate, and our team will create a planting plan for the City of Yakima.

## **Public Participation**

Based on our experience, we have found the input from the community to be highly beneficial and politically beneficial. We will work with local non-profits, businesses, schools, the City, and communities that score an 8 or higher on the Washington Environmental Disparities Map. We value their input, and it enhances the final product tremendously. We will have at least one community meeting and offer multiple meetings with community groups.

## **Plan Implementation**

ArborPro will identify the city management team and organizational structure required to implement the Plan as part of the overall Urban Forest management strategy. The team structure will be developed with input from the City of Yakima staff. Our team will also provide necessary training to all City Staff to implement the Management Plan.

## **Final Plan**

We are aware that the Urban Forest Management Plan will go through numerous revisions based on input from City Staff, City Council, Community Groups, etc. We will work diligently with City Staff to deliver revised copies in a timely basis working at the overall goal of a plan to provide the City with the necessary tools and documentation to properly manage the Urban Forest.

## Project Timeframe

ArborPro is prepared to begin work on this project by the proposed start date of November 15, 2023. We will begin with the project Kick-Off Meeting, follow our Work Plan, and present our first draft of the City’s Urban Forestry Plan by March 1, 2024.

## Estimated hours and rates of each team member

Description	Hourly Rate	Estimated Hours	Total
Project Manager	\$180	16	\$2,880.00
Urban Forester (Plan Author)	\$180	60	\$10,800.00
ISA Certified Arborist (TRAQ)	\$140	32	\$4,480.00
GIS Analyst	\$115	8	\$920.00
<b>Total</b>			<b>\$19,080.00</b>

ArborPro agrees to the current tentative timeframe outlined in the RFQ/P and commits to final deliverables and project completion by April 15, 2024.

## COST

Fees	Cost
Urban Forest Management Plan	\$ 19,080.00
Software Training	\$0
ArborPro Software (1-year license)	\$0
<b>Total</b>	<b>\$19,080.00</b>

## STATEMENT OF QUALIFICATIONS & REFERENCES

### PROJECT EXPERIENCE

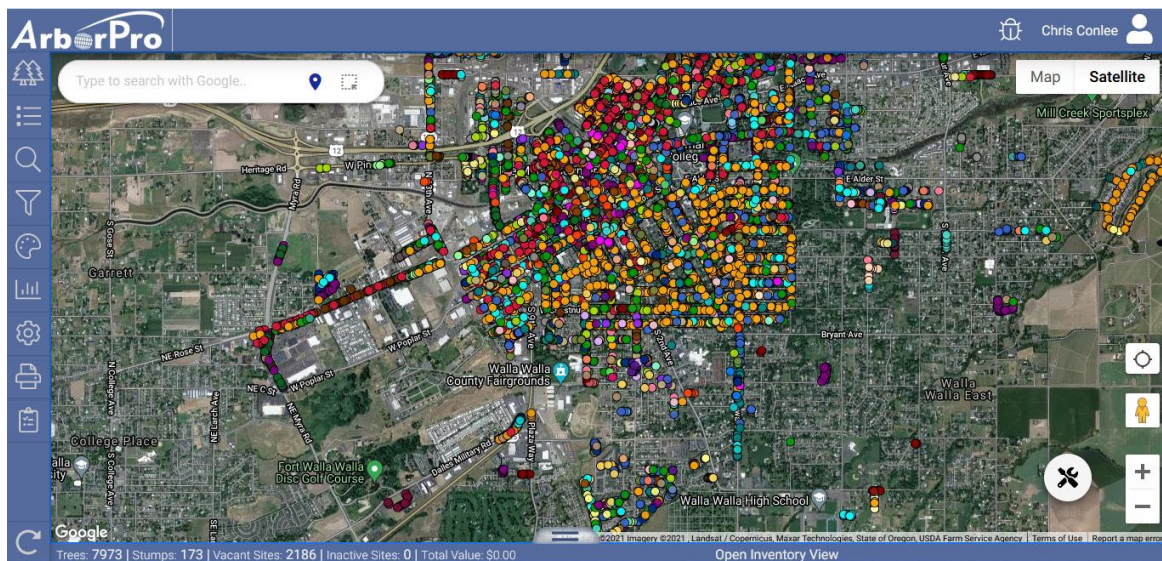
#### CITY OF WALLA WALLA, WA

In January 2021, ArborPro started working with the City of Walla Walla, Washington, to conduct a comprehensive tree inventory and develop a **Tree Management Plan**. This Plan considers the size characteristics, condition, and species distribution of the inventoried trees and provides a prioritized system for maintaining all trees within the survey area. The following tasks were completed:

- Inventory of trees, vacant sites, and stumps along street ROWs
- Analysis of tree inventory data
- Development of a plan that prioritizes the recommended tree maintenance

The 2021 tree inventory included trees and stumps within the City along public street rights-of-way (ROW). ArborPro ISA Certified Arborists recorded 10,332 sites during the inventory, which had 7,973 trees, 2,186 vacant sites, and 173 stumps. ArborPro created an **Urban Forest Management Plan** for the City of Walla Walla with the goal of increasing tree health and canopy coverage. The management plan included iTree environmental benefit analysis. We completed the project in March of 2021.

Below is a map of the Walla Walla tree inventory color-coded by species.



**Andy Coleman**  
Parks Director  
509-527-4527  
[acoleman@wallawalla.gov](mailto:acoleman@wallawalla.gov)



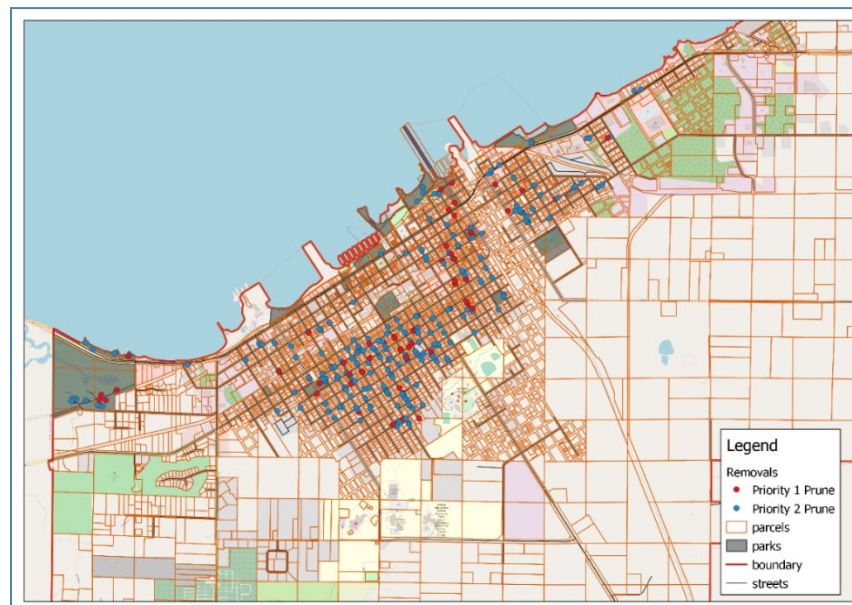
## CITY OF ASHLAND, WI

ArborPro worked with Ashland to conduct a comprehensive tree inventory and develop a **Tree Management Plan**. This Plan considers the size characteristics, condition, and species distribution of the inventoried trees and provides a prioritized system for the maintenance of all trees within the survey area. The following tasks were completed:

- Inventory of trees, vacant sites, and stumps along street ROW's and in public parks
- Analysis of tree inventory data
- Development of a plan that prioritizes the recommended tree maintenance

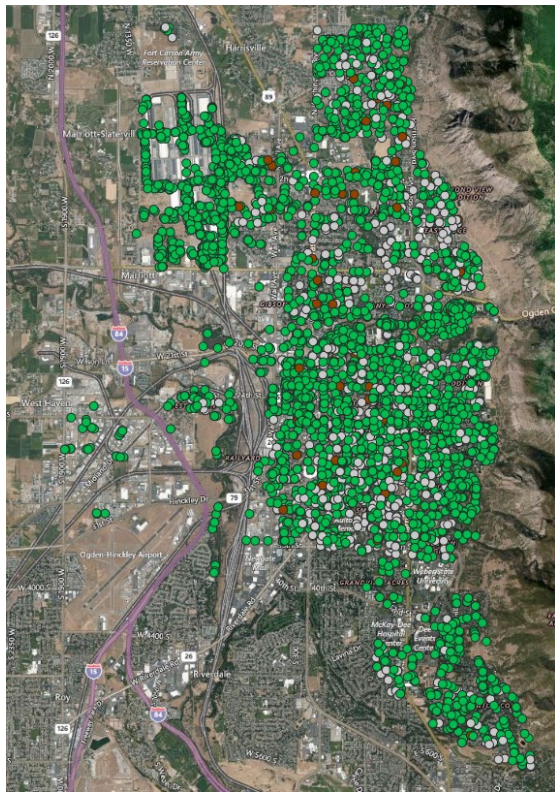
The 2017 tree inventory included trees and stumps within City parks and along public street rights-of-way (ROW). A total of 4,378 sites were recorded during the inventory, which included 4,348 trees and 30 stumps. Of the inventoried sites, 3,695 are located along street ROW's, and 683 are in City parks.

ArborPro found several high-risk trees (Priority 1 Prune and Removal) during the inventory that should be pruned or removed immediately to promote public safety. Below is a map of the Priority 1 Prune and removal submitted to the City of Ashland, WI.



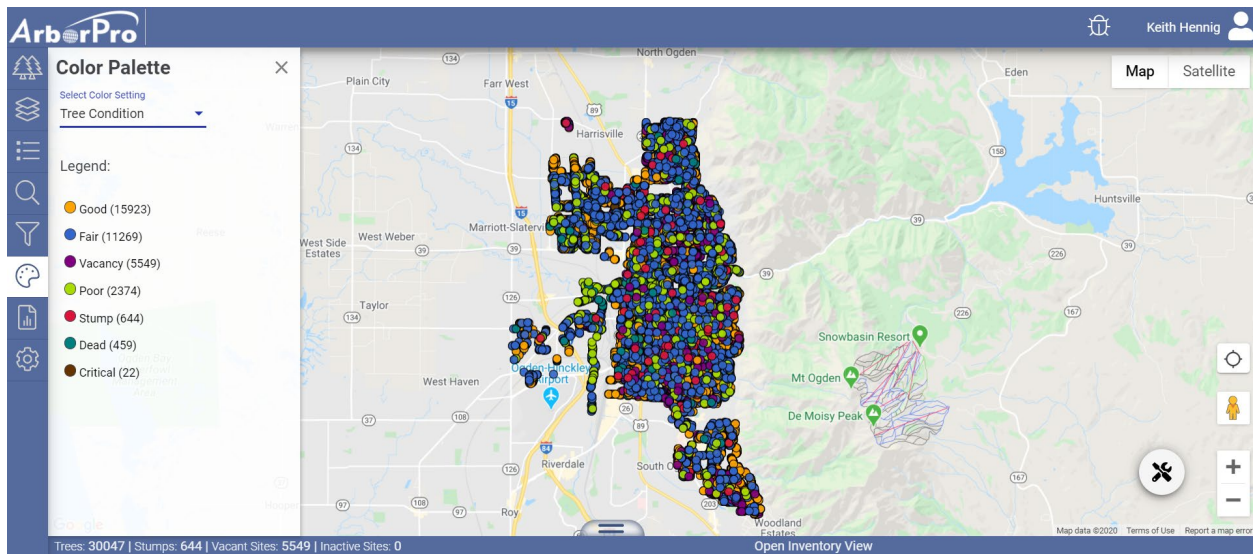
**Dan Maderich**  
**Civil Engineering Technician**  
City of Ashland, WI  
715-682-7045  
[dmaderic@coawi.org](mailto:dmaderic@coawi.org)

## CITY OF OGDEN, UT



In the Fall of 2020, ArborPro completed a tree inventory for the City of Ogden, UT. The inventory included all trees and stumps in the City's Parks and Street Right-of-Way for a total of 30,049 data points. Of the inventoried sites, 29,708 are located along street ROWs, and 341 are in City Parks. Upon completing the inventory, ArborPro developed an **Urban Forest Management Plan** to help the City with its short and long-term maintenance needs of all trees within the City Limits. In addition to maintenance and planning needs, the report addresses the economic, environmental, and social benefits that trees provide to the City of Ogden.

**Damien Reeves**  
City Forester  
City of Ogden, UT  
801-648-8310  
[damienreeves@ogdencity.com](mailto:damienreeves@ogdencity.com)



ArborPro, Inc. has completed over 500 tree inventories throughout the United States over the past twenty years. Our projects have varied in size from 100 to 350,000 trees. ArborPro, Inc. has the most experience in the country for completing projects of this scope. All the tree inventories provided by ArborPro for the past twenty years have included Level 2 Tree Risk Assessments.

Below is a partial list of tree inventory projects our team has completed:

Relevant Municipality Experience	
City of Hoquiam, WA	City of Kansas City, MO – 127,000
City of Sumner, WA – 4,750	City of West Miami, FL
City of Walla Walla, WA–14,790	City of Tallahassee, FL
City of Olympia, WA – 4,000	City of Jacksonville, FL
City of Astoria, OR	City of North Miami Beach, FL
City of Bend, OR	City of New Orleans, LA – 105,000
City of Albany, OR	City of East Palo Alto, CA
City of San Francisco, CA – 139,000	City of Newark, CA
County of Los Angeles, CA Parks – 86,000	City of Oakley, CA
County of Los Angeles, CA DPW – 217,000	Orangevale Park & Rec, CA
City of San Diego, CA - 100,000	City of Orange, CA
City of Cedar Rapids, IA – 8,000	City of Malibu, CA – 4,600
City of Ogden, UT – 36,250	City of Cupertino, CA
Village of Sleepy Hollow, NY	City of Milpitas, CA
City of Poughkeepsie, NY	City of Arvin, CA
Borough of Haddonfield, NJ	City of Kirkwood, MO
City of Hoboken, NJ – 14,800	City of North Kansas City, MO
Borough of Madison, NJ	City of Flower Mound, TX
City of Alexandria, VA	City of Miami Springs, FL

## **WORK SAMPLES**

### **CITY OF WALLA WALLA, WASHINGTON**

<https://www.wallawalla.gov/home/showpublisheddocument/5851/637638539338403862>

### **VILLAGE OF ROCKVILLE CENTRE, NEW YORK**

[https://www.dec.ny.gov/docs/lands\\_forests\\_pdf/cfmprockvillecentre.pdf](https://www.dec.ny.gov/docs/lands_forests_pdf/cfmprockvillecentre.pdf)

### **CITY OF POUGHKEEPSIE, NEW YORK**

[https://cityofpoughkeepsie.com/DocumentCenter/View/1190/Poughkeepsie-Tree-Management-Plan-09\\_29\\_20\\_FINAL](https://cityofpoughkeepsie.com/DocumentCenter/View/1190/Poughkeepsie-Tree-Management-Plan-09_29_20_FINAL)

### **CITY OF ASHLAND, WISCONSIN**

<https://www.coawi.org/DocumentCenter/View/724/2018-Ashland-Urban-Forestry-Management-Plan>



## PROJECT TEAM

ArborPro has full-time professional arborists who have years of experience working together. We propose to assign a team of highly-educated ISA Certified Arborists, led by multi-talented TRAQ ISA Certified Arborist Oscar Corvera, to complete this project.

ArborPro, Inc. does not use Subcontractors unless required by contract.

### **OSCAR CORVERA, OPERATIONS MANAGER**

Certified Arborist No. WE8225AUM, Certified Municipal Arborist, Certified Utility Specialist, TRAQ Certified

Oscar R. Corvera will be assigned as Operations Manager for this project. He will be the primary contact for the City of Yakima and ultimately be responsible for the project's success. He will provide the necessary time to maintain the project's integrity. He will be involved in all meetings with the City of Yakima, and monitor the project's progress.

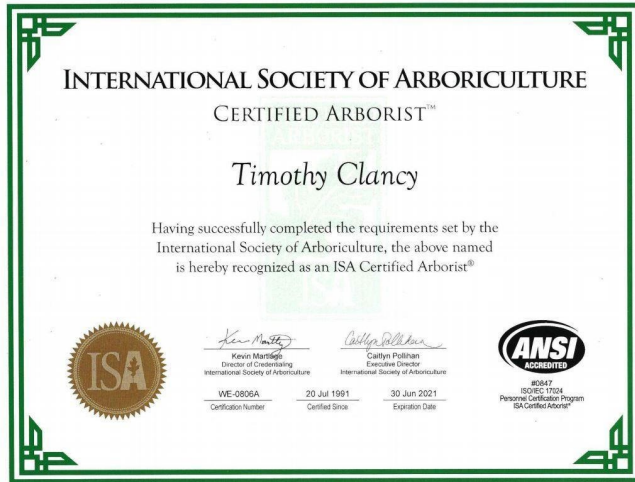
Oscar R. Corvera is a multi-talented professional with over 23 years of experience in Arboriculture, Vegetation Management, and Landscape Industries. He has experience in operations management, strategy and business development, large-scale mobilization/rapid response, utility vegetation management, leadership development, and strategic partnership creation.

Oscar has been certified by the International Society of Arboriculture as an Arborist for over 15 years, with additional certifications as a Utility Arborist, Municipal Arborist, and Tree Risk Assessor. Additionally, he has been a CPR/First Aid Instructor for over twenty years, along with certifications in his hobbies of Scuba Diving and maritime activities, of which he is also certified as an instructor.



During Oscar's extensive career, he has worked with over 300 public agencies, municipalities, and many commercial and private entities across the US. One of Oscar's most significant projects to his credit is the Hurricane Katrina Clean Up and Recovery Efforts. He was the Project Manager for over two years, seeing it through to the completion of the initial stages of Clean Up and Assessment for Rebuild. He oversaw over 500 contractors working on various tasks and assignments throughout the City during that project, directly managing over 150 field supervisors and managers.

## TIM CLANCY – MANAGEMENT PLAN AUTHOR



ISA Certified Arborist (CERT# WE-0806A), ISA Certified Tree Risk Assessor (TRAQ), Independent Consulting Arborist, ASCA Tree & Plant Appraiser Qualified, Registered Consulting Arborist

Tim Clancy has extensive experience managing tree inventories for various clients since 1998. He has performed numerous tree inventories and developed management plans for ArborPro's clients throughout the United States.

Tim's extensive experience dates back to his teens working in landscape maintenance in upstate New York and in his twenties in Southern Ontario, Canada. Recently, Tim authored the Urban Forest Management Plans for the City of Poughkeepsie and the Village of Rockville Centre. The New York Department of Environmental Conservation was so pleased with Tim's Management Plan that the DEC uses our Plan as an example for other cities in their state.

Tim's extensive experience includes the appointment to the City of Encinitas Urban Forestry Advisory Council, guest speaking



at the local community college on various urban forestry aspects, and consulting with multiple cities on various tree issues. Also, he authors a column on trees for the San Diego Horticultural Society.

As the primary author of the management plan, Tim will analyze the City's inventory data, city ordinances, and maintenance procedures and communicate with clients about the findings related to the project. Tim can tailor the management program to meet the City's specific needs by creating an open dialogue with the City's Project Manager. Tim's knowledge, expertise, and attention to detail make him a key to the success of this project.

## MASON BURDICK – PROJECT MANAGER

ISA Certified Arborist & Project Manager, ISA CERT # WE-13457A **TRAQ**, Utility Specialist



Mason Burdick graduated from the University of California Santa Cruz with a Bachelor of Science in Earth Sciences, concentrating in Environmental Geology, in 2016. Since he began with the ArborPro team in June of 2018, Mason has worked his way up from a Vegetation Management Pre-Inspector and Tree Inventory Data Collector to leading projects. Mason is competent with multiple GIS data collection software. He has been a certified arborist since 2021 and has worked on dozens of inventories in addition to municipal and military installations. Mason authored the Final Summary Report for the Town of Albany.

Mason's tree inventory experience includes, but is not limited to:

City of Sumner, WA  
City of Albany, OR  
City of San Francisco, CA  
City of Cupertino, CA

City of Walla Walla, WA  
City of Oakley, CA  
City of East Palo Alto, CA  
City of Astoria, OR

## KEN GREBY – SPECIES SPECIALIST

ISA Certified Arborist & Species Specialist, ISA CERT # WC 0550

Mr. Greby has been involved with plants and trees for his entire working life. He graduated in 1987 from California Polytechnic University, Pomona with a BS in Horticulture, and a minor in Botany. Mr. Greby has been a certified arborist since 1998 and has worked on over 50 university inventories in addition to municipal and military installations. Mr. Greby volunteers much of his time at Arboretums, conducting instructional classes for city personnel as well as residents on tree ID and tree care. Mr. Greby is the company's species specialist. He will contribute his knowledge of the area, community, and urban forest.



Ken's tree inventory experience includes, but is not limited to:

City of Sumner, WA  
City of Hoquiam, WA  
City of Walla Walla, WA  
City of Astoria, OR  
UCSD

County of Los Angeles, CA  
City of San Diego, CA  
City of San Francisco, CA  
City of Malibu, CA  
City of Orange, CA



## TREE MANAGEMENT SOFTWARE

ArborPro's proprietary GIS Tree Inventory Software, ArborPro is very robust in features and integrates easily with other platforms. Inventory data collected with ArborPro can be easily exported for use in different formats like ArcGIS, ESRI Shapefile, geodatabase, .csv and Microsoft Excel. ArborPro utilizes the latest in GIS (Geographic Information System) technology to offer users an immediate visual representation of any tree. The ArborPro software program can be reviewed at [www.arborprousa.com](http://www.arborprousa.com), or a personalized software demonstration is available upon request. Our program can also be linked to other Asset Management programs or GIS systems, we can link through an API to ESRI online or any other system the City of Yakima currently utilizes.

## EASE OF USE

Our Team of Certified Arborists and GIS professionals created the ArborPro Software system, incorporating inputs from both field staff and software professionals. The result is a comprehensive, easy-to-use, powerful GIS tree inventory program that assists our clients in managing their Urban Forests. Due to its simplistic user interface, neither extensive training nor extensive computer knowledge is required for ArborPro proficiency. Data can also be exported into an ESRI shapefile, thus allowing GIS personnel to analyze data in ArcGIS or Google Earth format.



## MAP VIEW – INTEGRATED MAPPING COMPONENT

Our mapping view provides the ability to view Full Extent, Zoom In, Zoom Out, Select Trees, Identify Trees, Create New Sites, Move Trees, Draw Polygons, Add Base Layers, and perform Spatial Queries. Utilizing the Select Tool, the user can select a grouping of trees to request detailed information or create a work order.



## DATABASE VIEW

The database view from ArborPro is an easy, sortable datasheet. It provides an easy way to find an individual or group of trees in the database using location attributes. Double-clicking, an individual tree brings up the tree detail form.

The screenshot shows the ArborPro interface. At the top, there's a map of a residential neighborhood with streets like Louisiana St, Overland Ave, and Ohio St. Trees are marked with colored dots. Below the map is a data table with columns for Tree ID, Property, Property Address, Property Street, On Street, Fictitious?, Side, Parkway Type, Parkway Size, Botanical, Common, Species Id, Tree Condition, DBH Range, and Exact DBH. The table contains four rows of tree data.

Tree ID	Property	Property Address #	Property Street	On Street	Fictitious?	Side	Parkway Type	Parkway Size	Botanical	Common	Species Id	Tree Condition	DBH Range	Exact DBH
7869	Vallejo	527	Ohio St	Ohio St	No	Front	Monolithic	99	Quercus coccinea	Scarlet Oak	382	Good	19-24	22
7875	Vallejo	515	Ohio St	Ohio St	No	Front	Monolithic	99	Quercus coccinea	Scarlet Oak	382	Good	19-24	20
7874	Vallejo	515	Ohio St	Ohio St	No	Front	Monolithic	99	Quercus coccinea	Scarlet Oak	382	Good	13-18	16
7802	Vallejo	639	Louisiana St	Louisiana St	No	Front	Parkway	5	Quercus suber	Cork Oak	256	Fair	30+	36

## TREE DETAIL FORM – TREE SITES

The Tree Detail form provides the tree’s attribute information and a link to street view (if available). Tree attribute details are customizable to fit client requests. Additional photos can be attached directly from the field using a tablet or smartphone. These photos can show damage and/or tree characteristics, for example, flower color. In more detail, any tree attributes unspecified by existing fields can be recorded in the notes section. All data fields can be customized by the user, the user can also add data fields at any time. Our program is fully customizable by the user with administrative rights.

The Work History tab maintains all work records associated with each tree. This tab also maintains scheduled work, if work is proposed or scheduled through the work order system it will appear on each tree when the work tab is selected. Below are some sample screen shots from our tree detail form, the first on the left shows the tree details, the second is when you scroll down the form and see any pictures applied, the next is the work history tab which is found on the same form under the tab work. You will also see four buttons across the top of the form where the user can toggle to Google Street View, print a detail report of that tree and the more options tab which includes the ability to share the data for this tree to an associate or the public and the ability to open google maps. When you select google maps you can get directions to that tree from your smartphone through the google map program. The screenshots below the details tab show the google street view of the same tree.

**Details** ✕  
 ID: 44511      GID: 9ybo48g8hh

Save    Toggle Street View    Details Report    More Options

Tree      Work

---

Species  
**Mexican Fan Palm** ✎  
 ↳ Washingtonia robusta - ID: 292

Species Id: 292      Tree Condition: Good

DBH Range: 13-18      Exact DBH: 18

Status: Tree      # of Trunks: 1

Recommended Maintenance:  
 Routine Prune

Clearance: None      Utility Conflict: N


**Details** ✕  
 ID: 44511      GID: 9ybo48g8hh

Save    Toggle Street View    Details Report    More Options

Tree      Work

---

**Images**



**Details** ✕  
 ID: 44511      GID: 9ybo48g8hh

Save    Toggle Street View    Details Report    More Options

Tree      Work

---

**Add New Work History** ☰

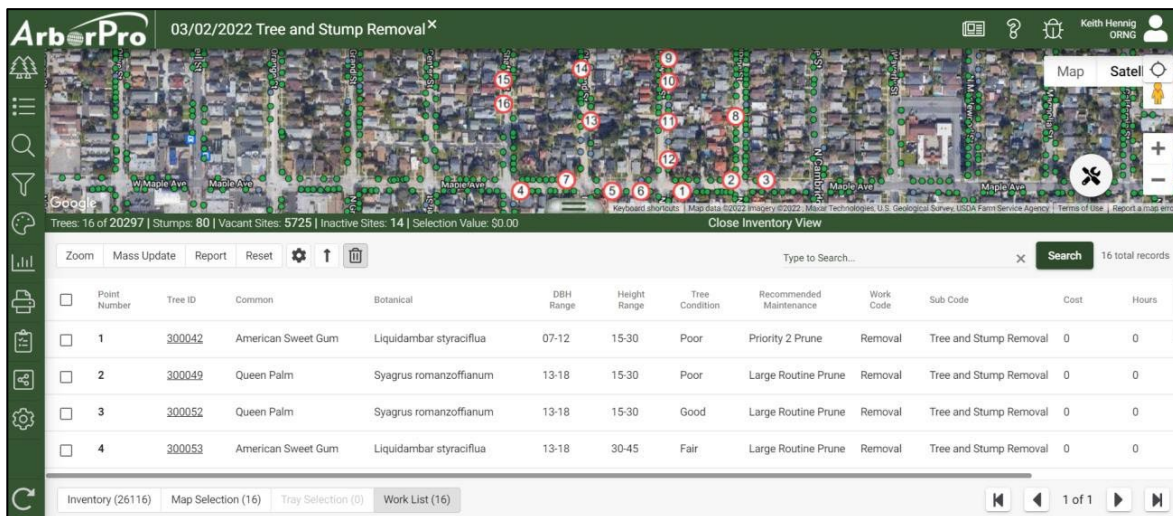
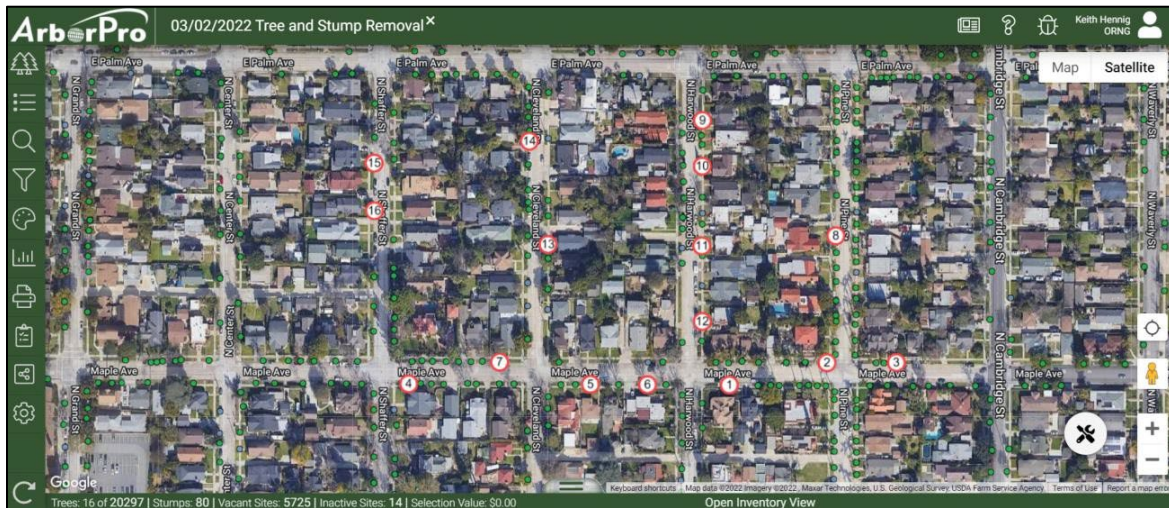
**Completed:** 2/16/2022  
 ↳ Prune - Palm Prune \$125  
 ↳ Tree Elements, Inc.





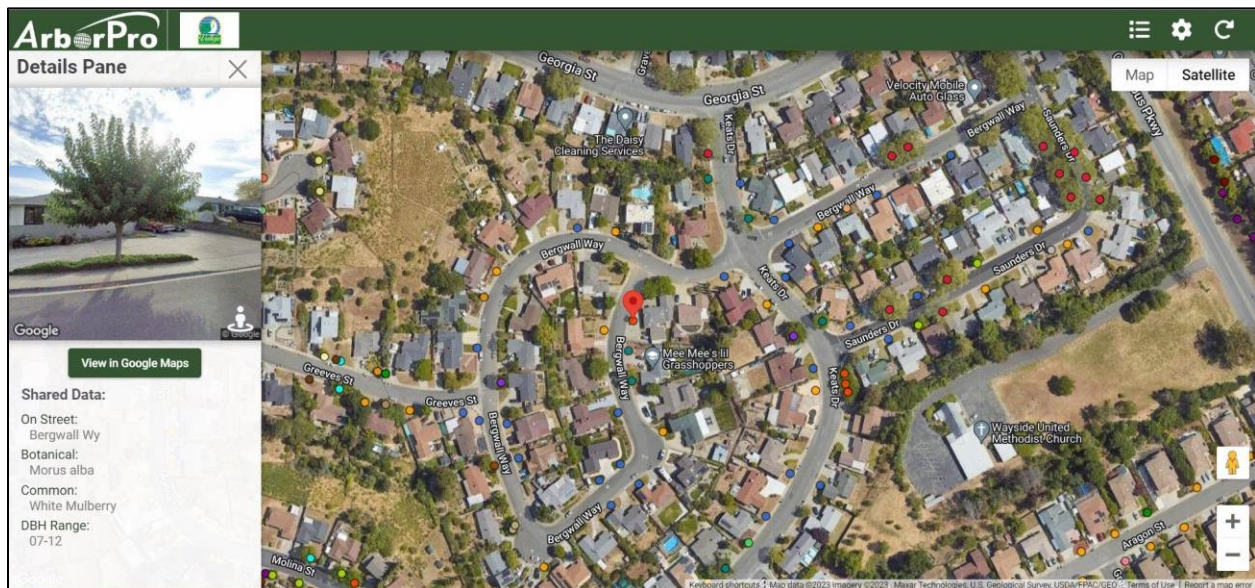
## WORK ORDER MANAGEMENT

Our system was developed by Certified Arborists who understand the need for the field crews to have a straightforward work order and map to complete their field duties. ArborPro, Inc. created an easy-to-use work order system. The user can create a work order from a database search or map selection. This work order is accessible to the City Crew or Contractor through any web-enabled device. Each location on the work order is assigned a work number, and the points on the map are assigned corresponding location numbers. Utilizing these corresponding numbers, the work crew can easily find the trees to perform their work tasks. Field crews can update the work performed while in the field from a phone or tablet, the cost of work performed can also be included. Work performed can also be updated through our mass update feature so multiple locations can be updated with one click. Finally, the work order can be accessed through our off-line app so that work completion records can be updated without internet or cellular access.



## COMMUNITY VIEWER

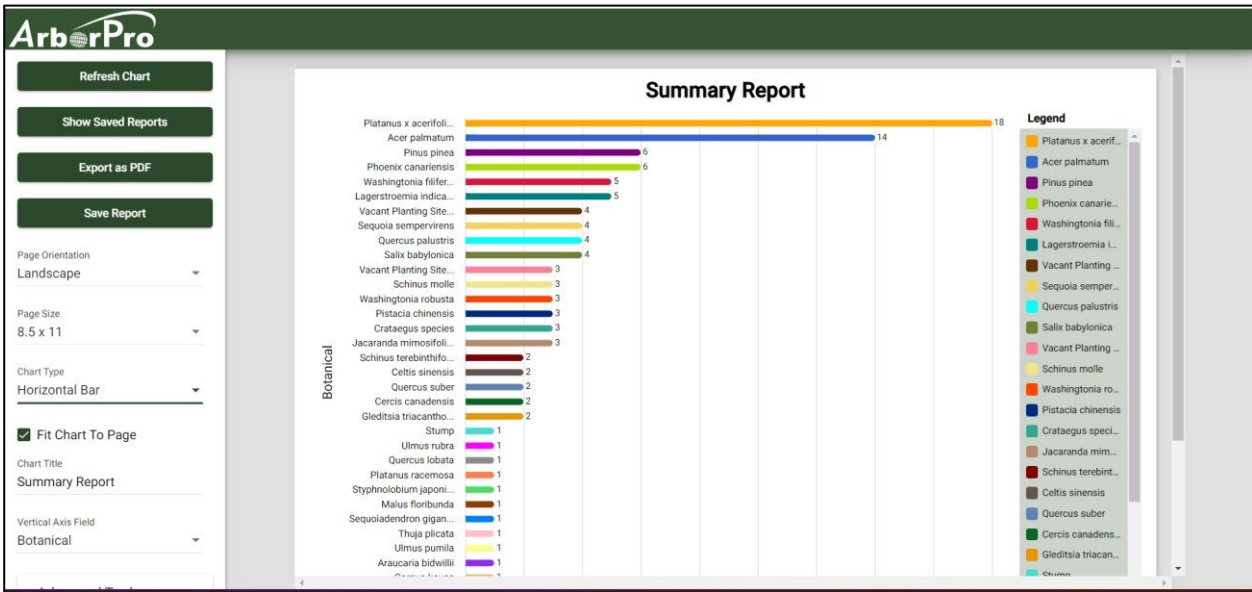
Our Community Viewer allows the City to share all of the tree inventory data or a limited dataset. The Admin user can select which trees to share and, more importantly, what data to share with the public at large or other groups. For instance, if the user would like to share the data for one council member’s district trees, you can search for those trees, select what data fields to share then send a link to that dataset. Many of our clients will create a complete tree inventory Community Share link and share it on their website. ArborPro, Inc. recently completed the City of Los Angeles Arboretum tree inventory. We are setting up a QR code so that visitors to the Arboretum can click the QR code as they enter the Arboretum and then access the data as they walk through the Arboretum. The program shows where you are walking in the Arboretum you then click a tree and access the data. Below you will see that the data fields are limited to the selected fields to share and google map photo is also accessed.



## REPORTING CAPABILITIES

The ArborPro reporting capabilities are both easy to use and powerful. The user has the capability to customize reports to meet their needs. Any type of charts and graphs are accessible. The reports can easily be printed or created in a pdf format. Furthermore, you can download your complete dataset or any selected data set in an excel or csv format, including Lat/Long coordinates for use in other GIS programs.





**ECO Benefits**

ArborPro utilizes the i-Tree engine to determine the eco-benefits provided by the urban forest. By utilizing this system, we apply the US industry standard with regards to Eco-Benefit reporting. All of these data fields are accessible through the detail form on a tree-by-tree basis. You can also get a summary of Eco-benefits for a grouping of trees.

**Customization**

The City of Yakima can customize the data fields in the program and also customize any reports. We include a complex query option that allows our clients to create complex queries and save them. While we have a simple query option, for example, search all trees of a certain species based on condition, etc. The users that would like to create complex queries also have that ability.

**Pricing**

We believe that all our clients should have full access to all of the program’s capabilities. Therefore, we do not create a menu of options for our clients. Once you purchase our product, you receive all of the power of ArborPro. We have no limit on the number of trees and have numerous clients with well over 100,00 trees in their database. Our Offline program is included with no limitations on downloads and tree counts. The offline system can be downloaded from the Apple store from any user.

**Public Access**

As previously discussed, our Community Viewer will allow the City of Sacramento to share the data publicly. Importantly, you can share the data you choose to share, be that the trees or the data shared by tree.

**Training**

Our all-in-one price includes unlimited training for all users. We will provide an on-site training session as requested. Following that training session, we have a variety of training videos accessible through the program’s dashboard, we have a YouTube site with additional training videos. Web-based training sessions will be recorded and available to the City upon request. We also have Customer Service Representatives available via phone or through web meetings for hands-on training throughout the service term.

**Additional Layers**

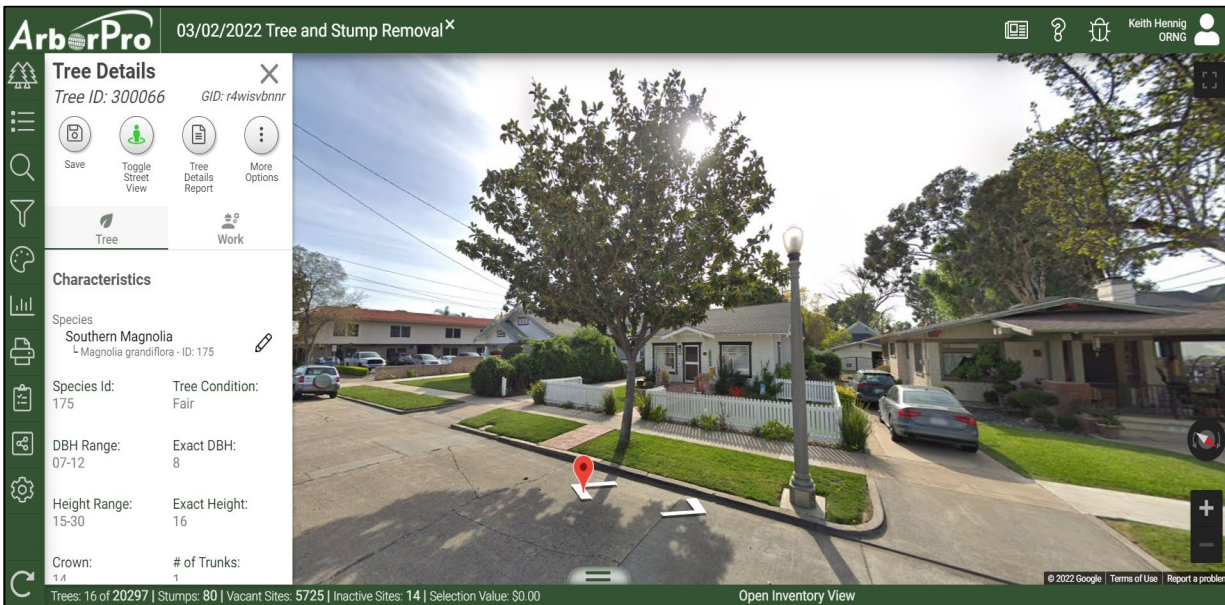
Our program also allows for adding any other GIS layers, including parcels, centerline, aerial photos, other asset groups, etc.

**Import/Export**

Our program can import any dataset requested by the client, and at any time, you can download either the entire inventory or a selected grouping from the program.

**Map Features**

We are currently releasing our map features module, also known as our asset module. This allows the user to add any other asset group, such as fire hydrants, street lights, park benches, etc. You will be able to utilize all the tools accessible for the tree inventory with the other asset groups. These assets can be collected using ArborPro or uploaded into the system through a shapefile or geodatabase.



A tree inventory is a time and money-saving tool that will benefit the City of Yakima year after year. The liability factor of damage to property and people will be significantly reduced when hazardous trees are located and identified. Tree maintenance costs will be reduced with the ability to create work orders for tree crews, making their job easier and saving time. It is evident with seven years with a Tree City USA designation, your City and community appreciate the benefits of investing in their Urban Forest. At ArborPro, we share this same commitment and look forward to working with you.

