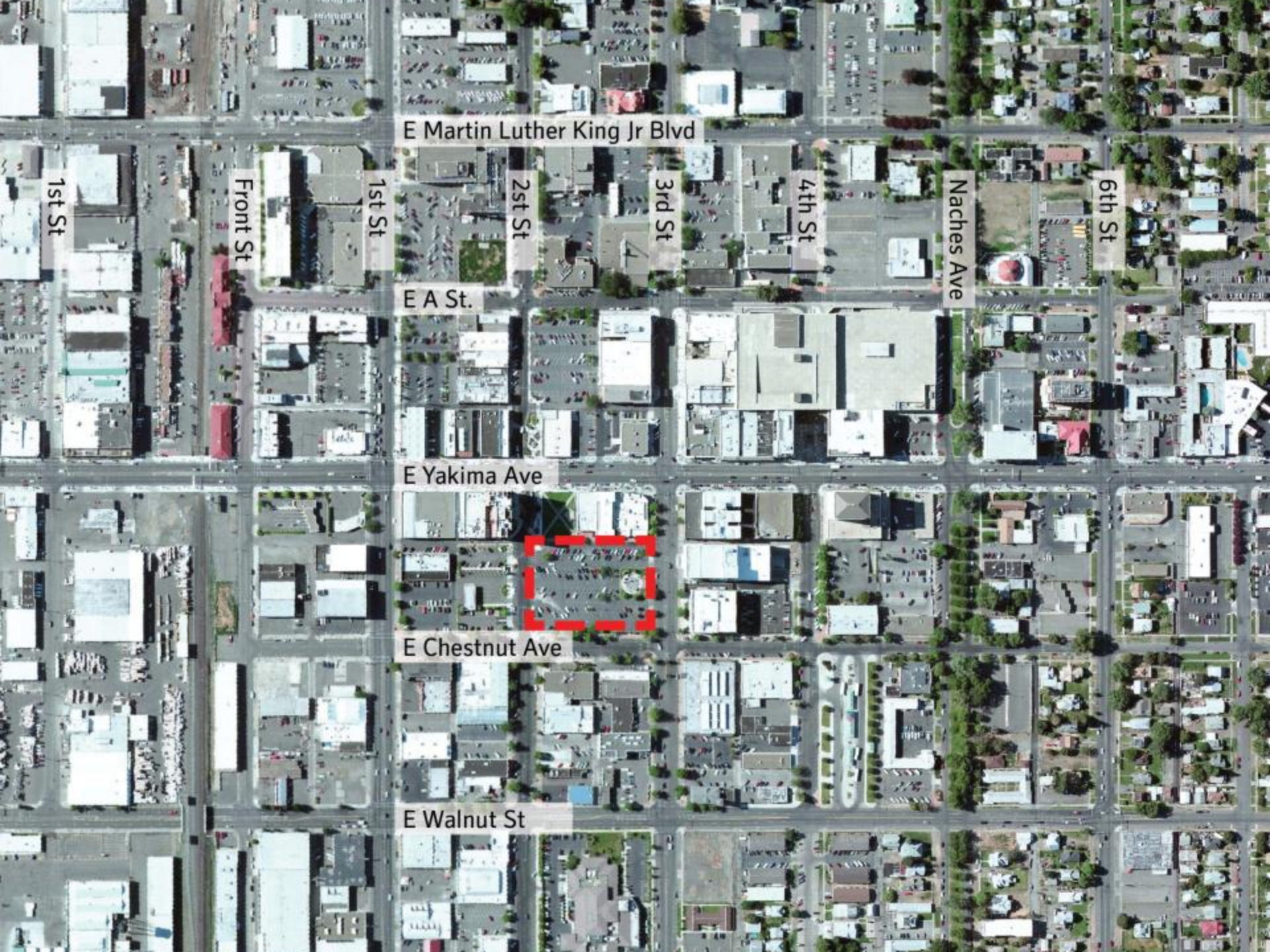


An aerial photograph of a vast vineyard with rows of grapevines stretching across the landscape. In the background, a small town is visible, followed by rolling hills and a large mountain range under a clear sky. The text 'YAKIMA' and 'CENTRAL PLAZA' is overlaid in large, white, sans-serif capital letters.

YAKIMA CENTRAL PLAZA

Final Concept

GUSTAFSON GUTHRIE NICHOL
Graham Baba Architects
Magnusson Klemencic Associates



E Martin Luther King Jr Blvd

1st St

Front St

1st St

2nd St

3rd St

4th St

Naches Ave

6th St

E A St.

E Yakima Ave

E Chestnut Ave

E Walnut St









What we heard

people
outdoor
grapes
trees
community
orchards
history
mountains
food
geology
beautiful
hops
local
river
light
events
industry
wonderful
art
sun
community
heritage
produce
fruit
beer
native
agriculture
apples
valley
fruit
diversity
wine

What's the most interesting thing about Yakima?

- Agricultural bounty
- Geology & Natural Setting
- Diverse cultures
- History







University of Washington Special Collections



Brooklyn Museum



UO Museum of Natural and Cultural History



11302
REXEL CORTIS

Events

- 5 Local Events
- 5 Regional Events
- 5 Concerts/Performances
- 5 Seasonal Markets
- 5 Weekly Farmers Market
- 5 Agriculture Events

1

2

3

4

5



Least popular

Neutral

Most popular

Water

4 Water Play

4 Calming Water

1

2

3

4

5



Least popular

Neutral

Most popular

Plants

- 5 Shade Trees
- 4 Flower Garden
- 4 Open Lawn
- 2 Orchard

1

2

3

4

5



Least popular

Neutral

Most popular

Built Elements

- 5 Shade Structures
- 4 Food Concessions
- 4 Coffee/drink stands
- 2 Retail Kiosk

1

2

3

4

5



What is Yakima's
genius loci?

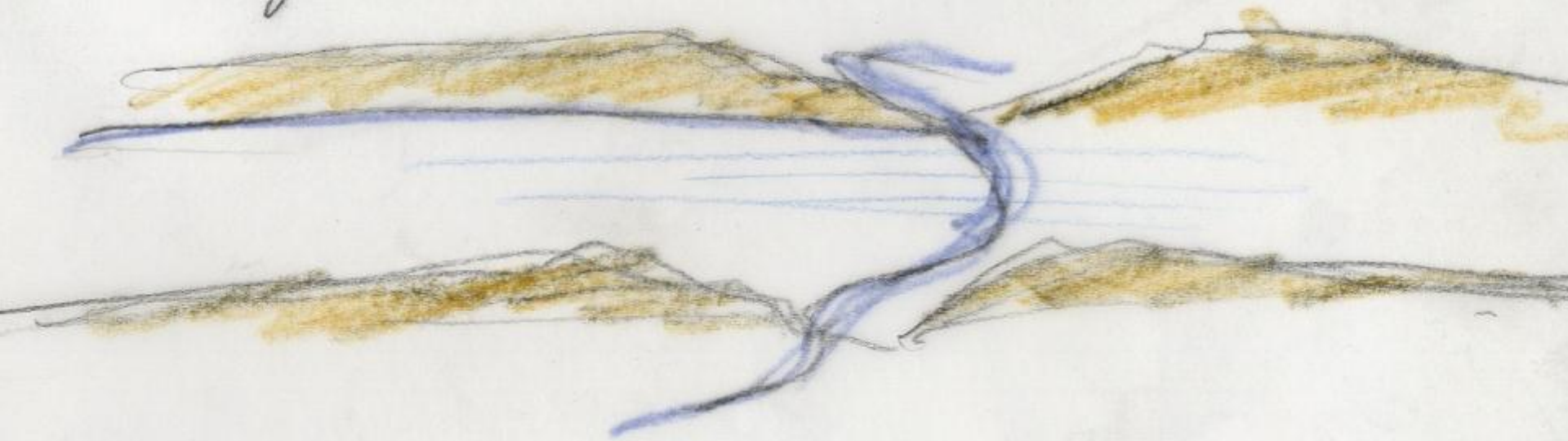
2 Ridges

2 Rivers

2 Gaps

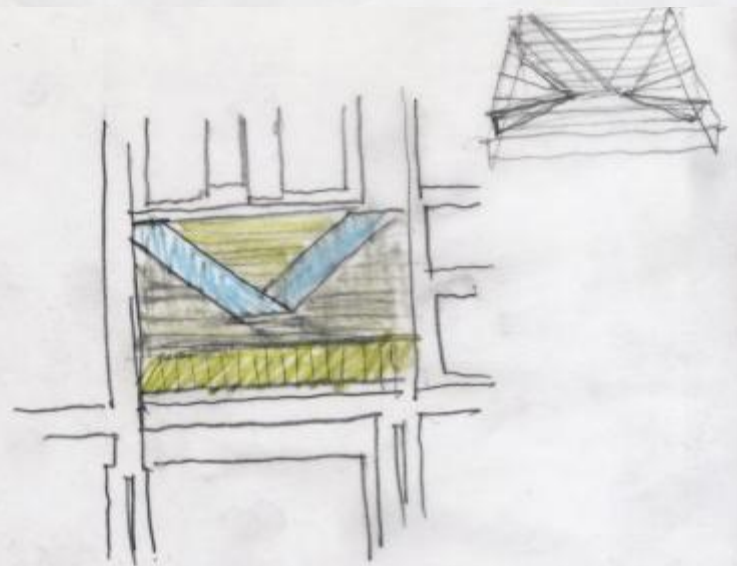
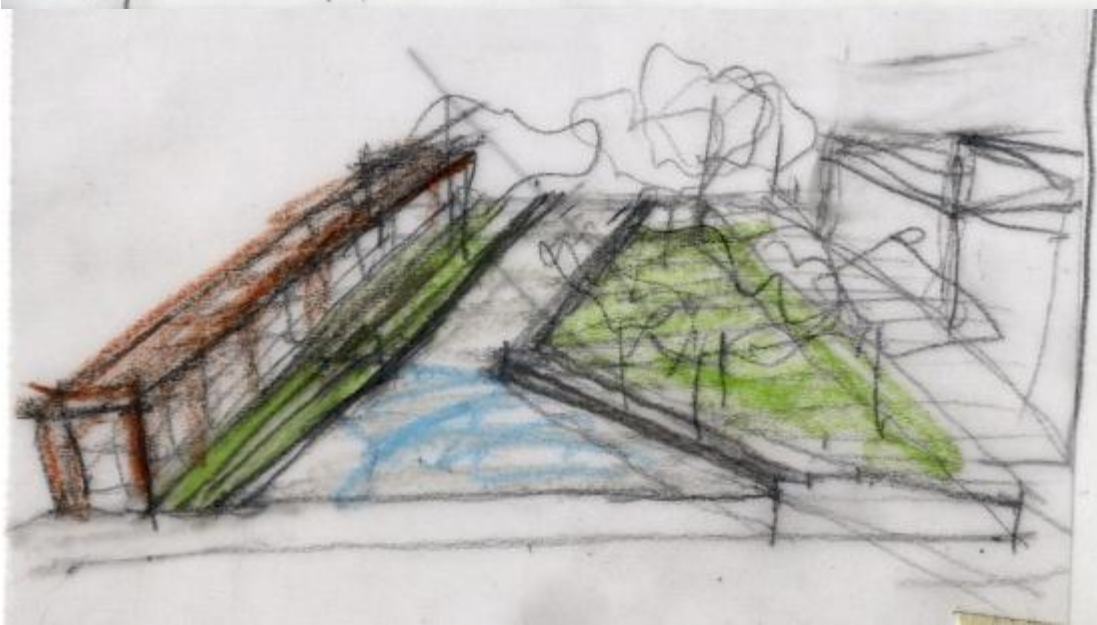
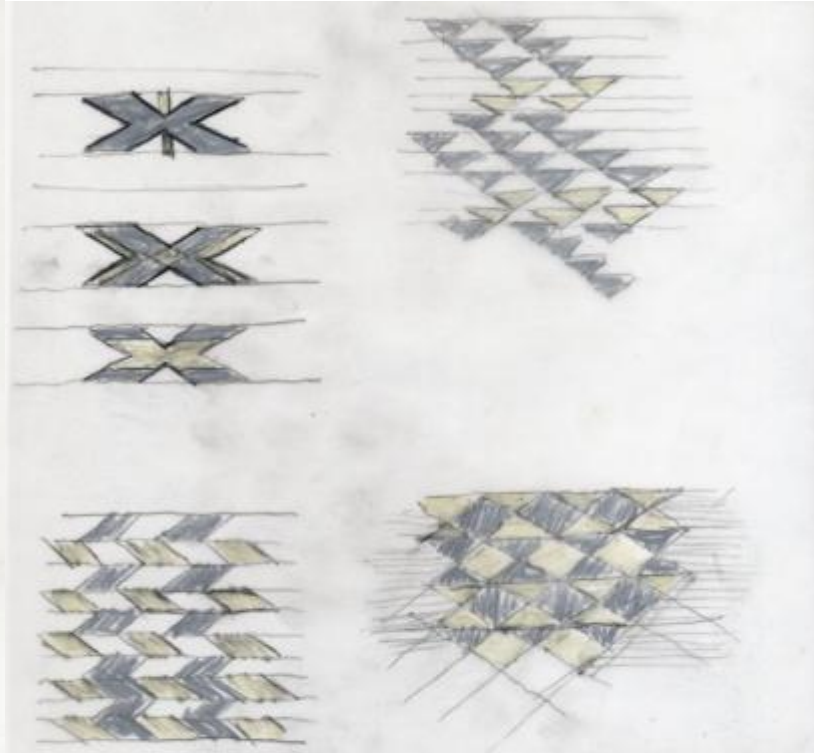
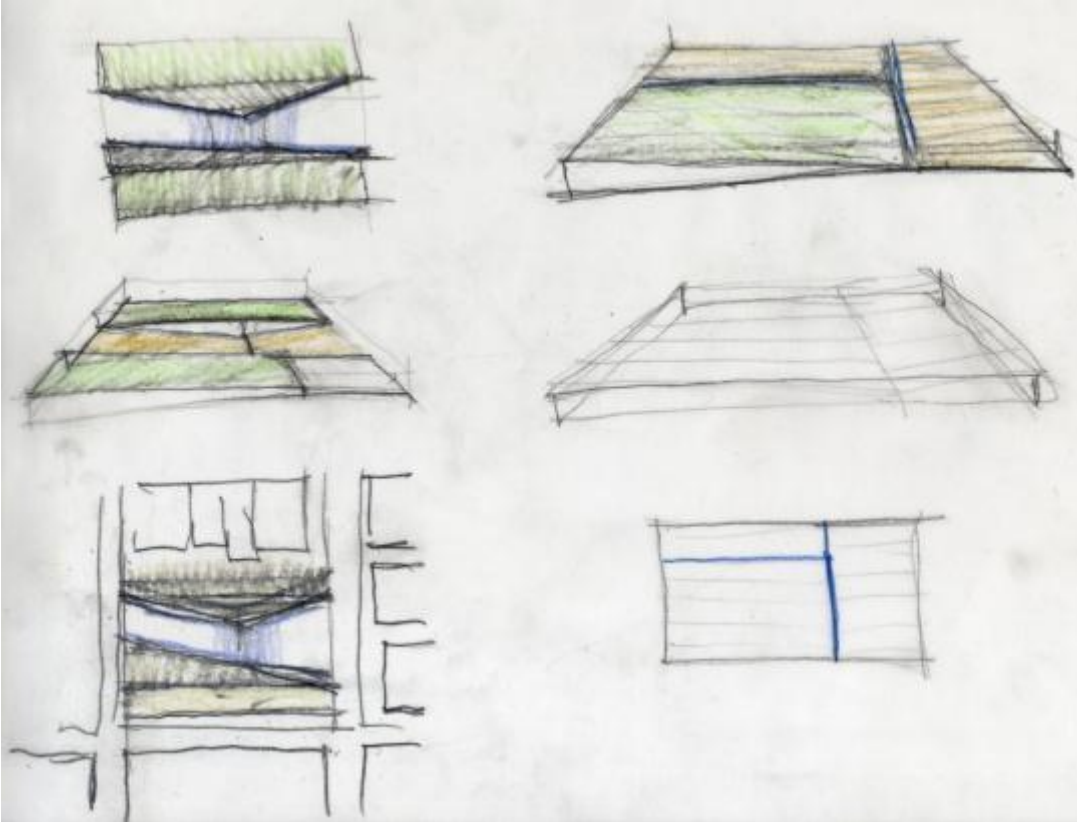
1 Valley

2 gaps 2 ridges 2 rivers



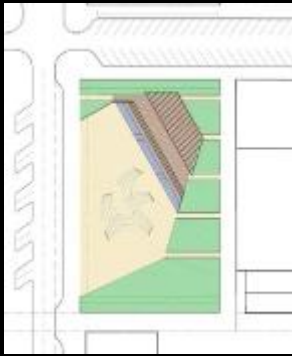


Design evolution



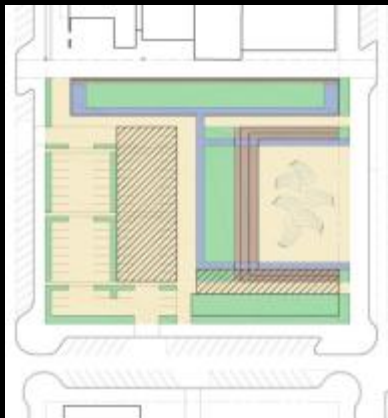


N

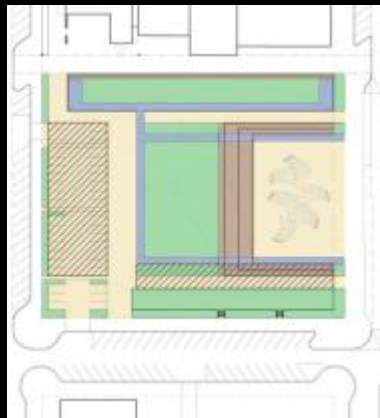


Where we were

U-a



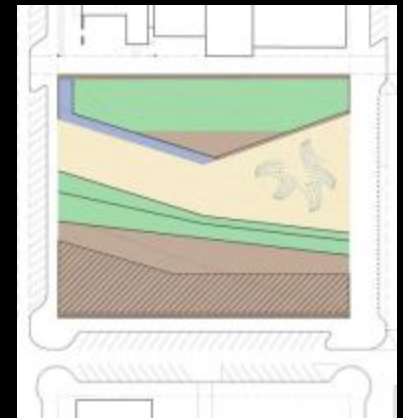
U-b



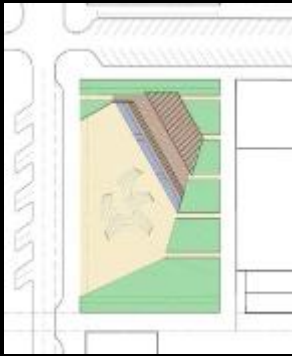
Y-a



Y-b



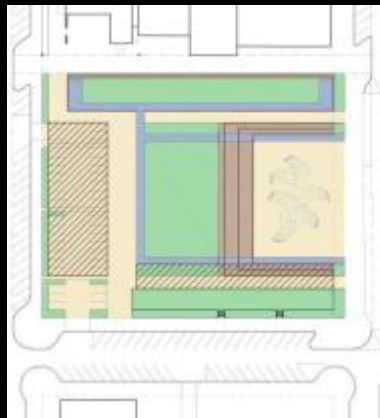
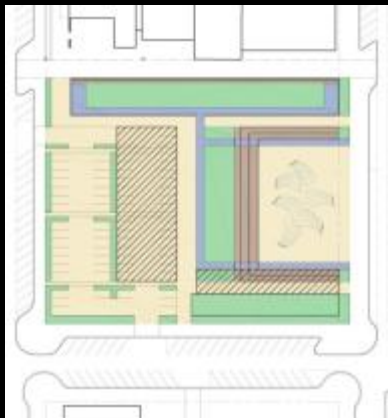
N



Where we were

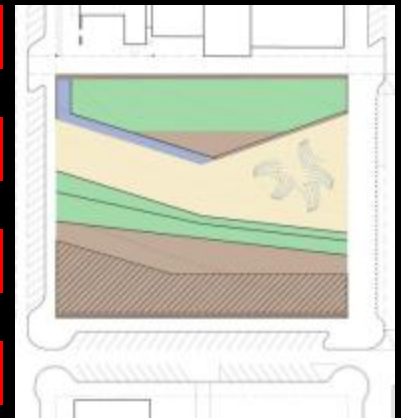
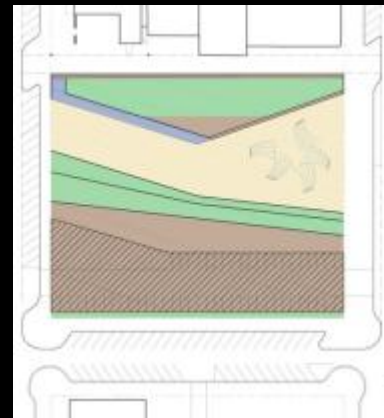
U-a

U-b



Y-a

Y-b





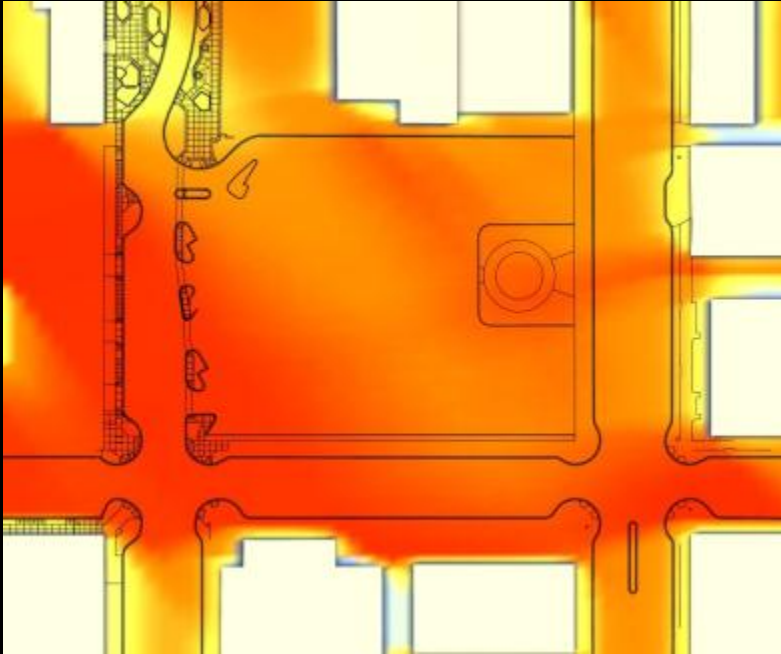
Site Analysis



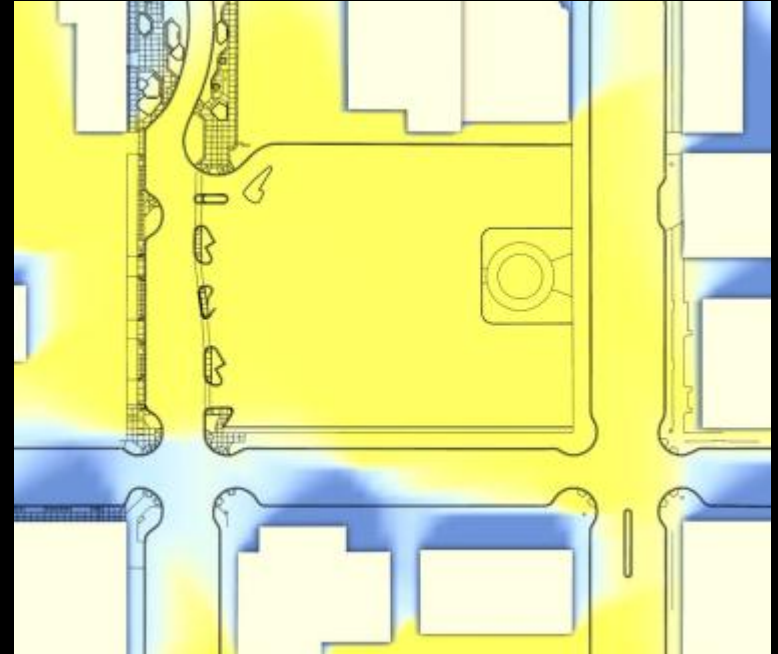
- Historic
- Retail
- Civic
- Inactive
- Filtered view
- View corridor
- Views in and out

Sun Study

Summer

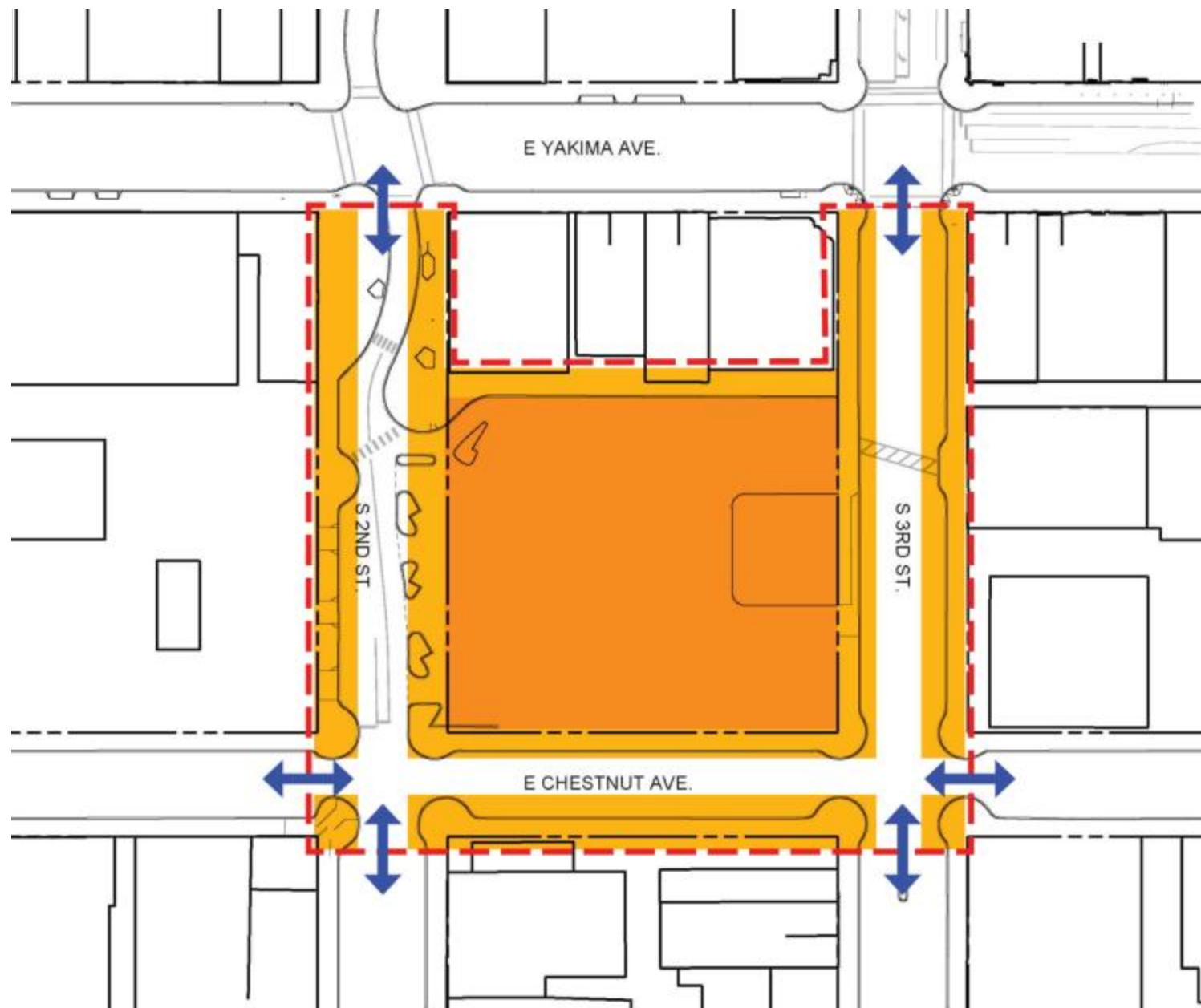


Winter



Hours of sunlight in a day





Millennium Plaza



Plaza Elements

Plaza Elements



Water



Flexible Plaza Space



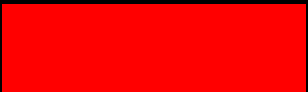
Seating Steps/Terraces



Lawn

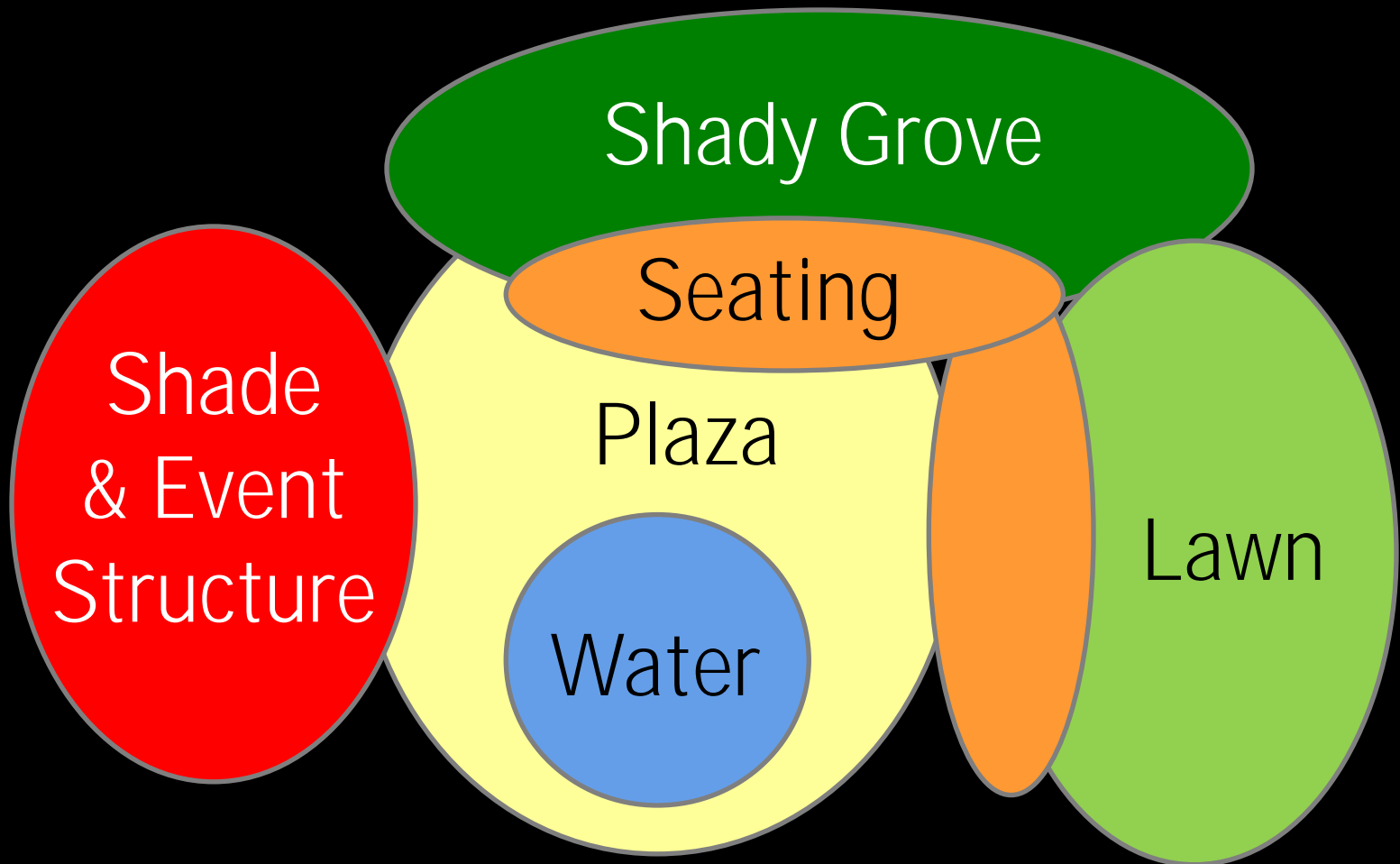


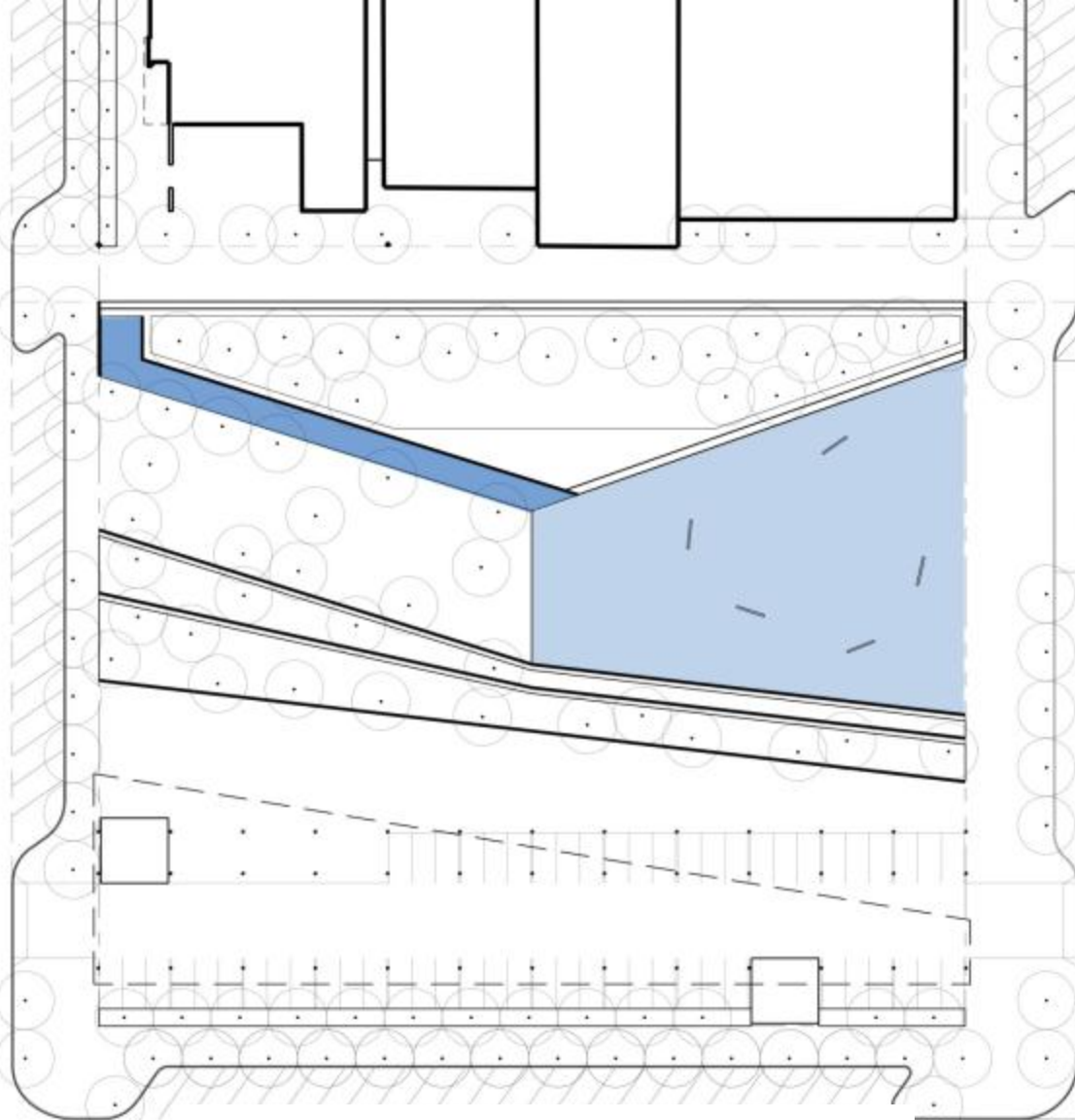
Grove



Shade Structure

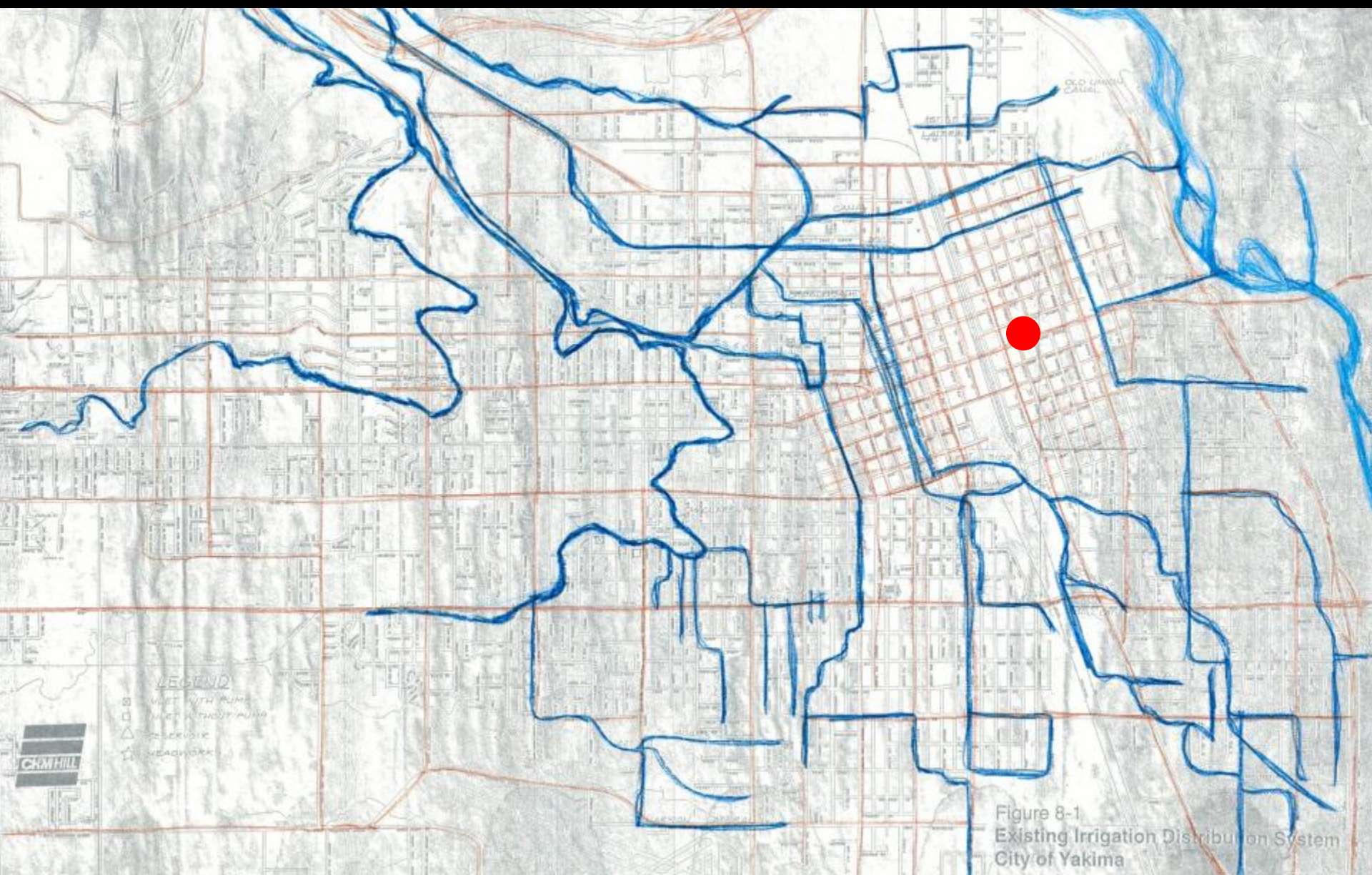
Plaza Elements





Water









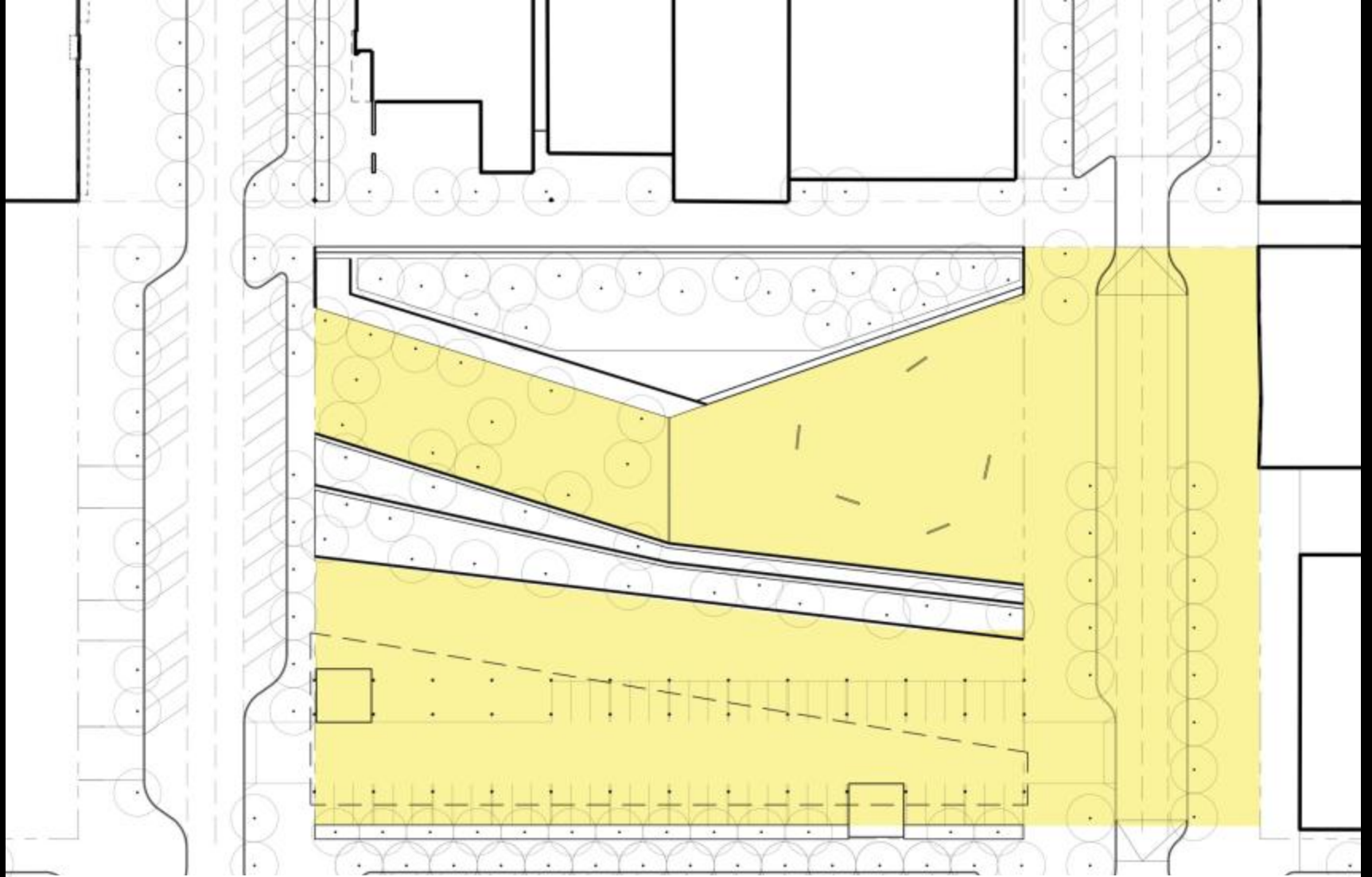




Roy Mersch / Photolibrary.com







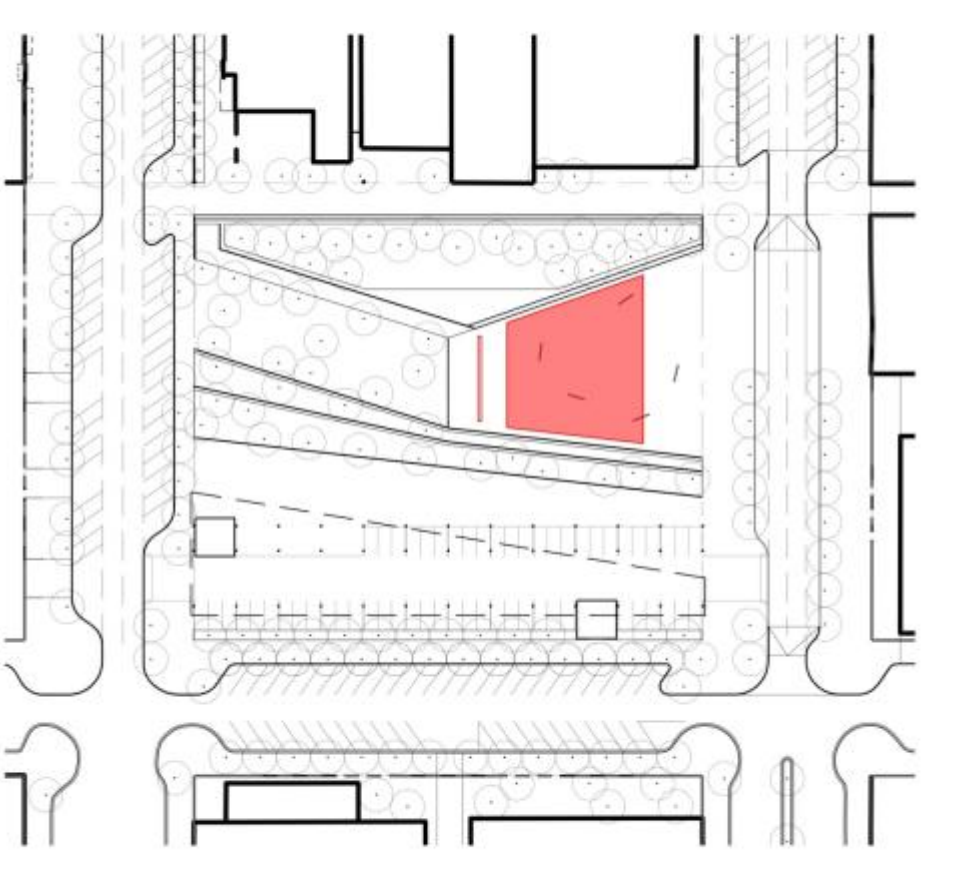
Flexible Plaza Space



Cinco de Mayo





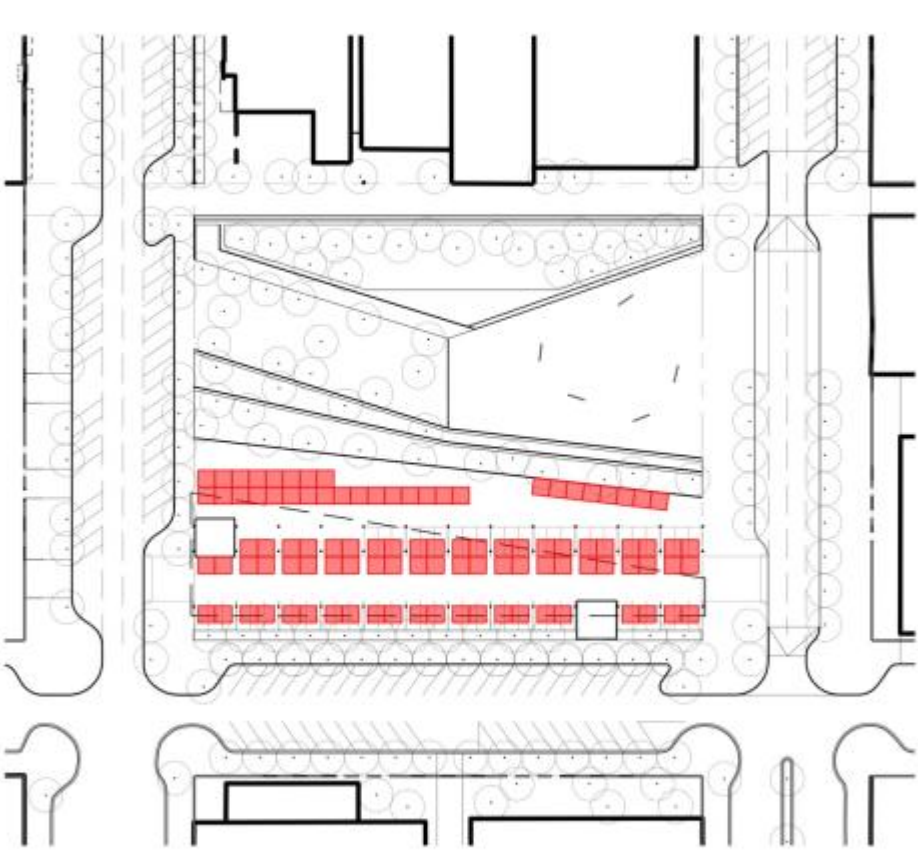


Outdoor Movie

(approximate minimum size)

Large Movie screen and
seating for 500



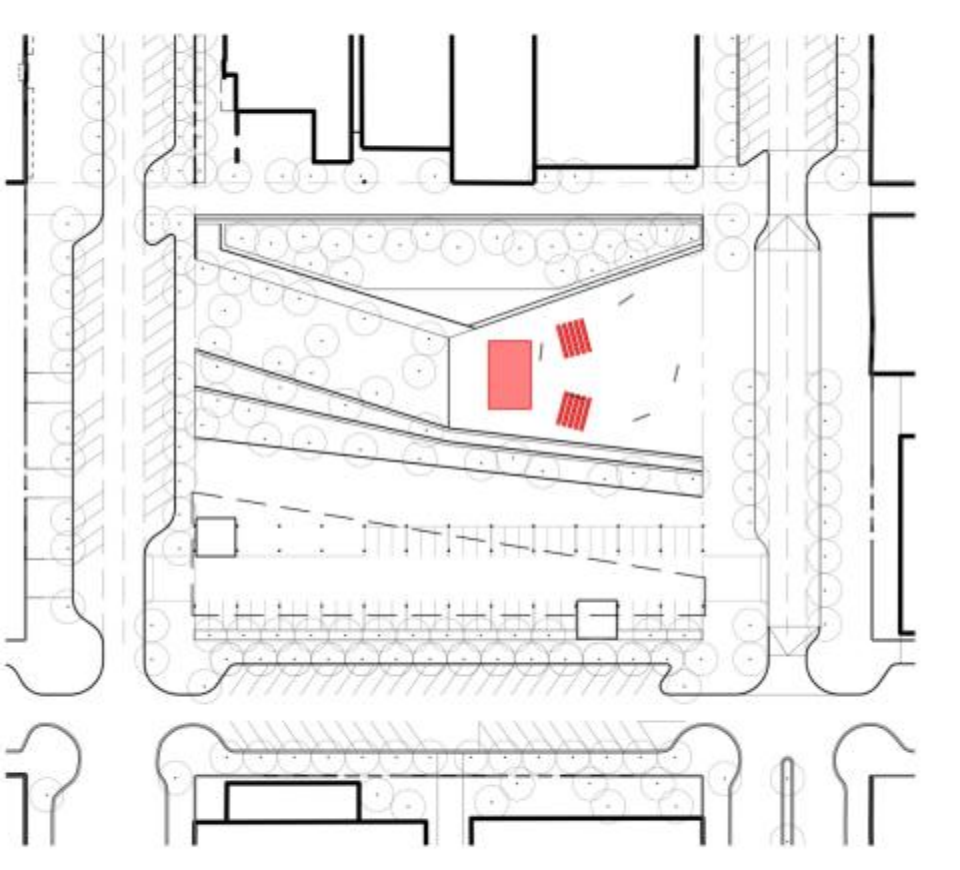


Farmers Market

(approximate minimum size)

100 Farmers market stalls



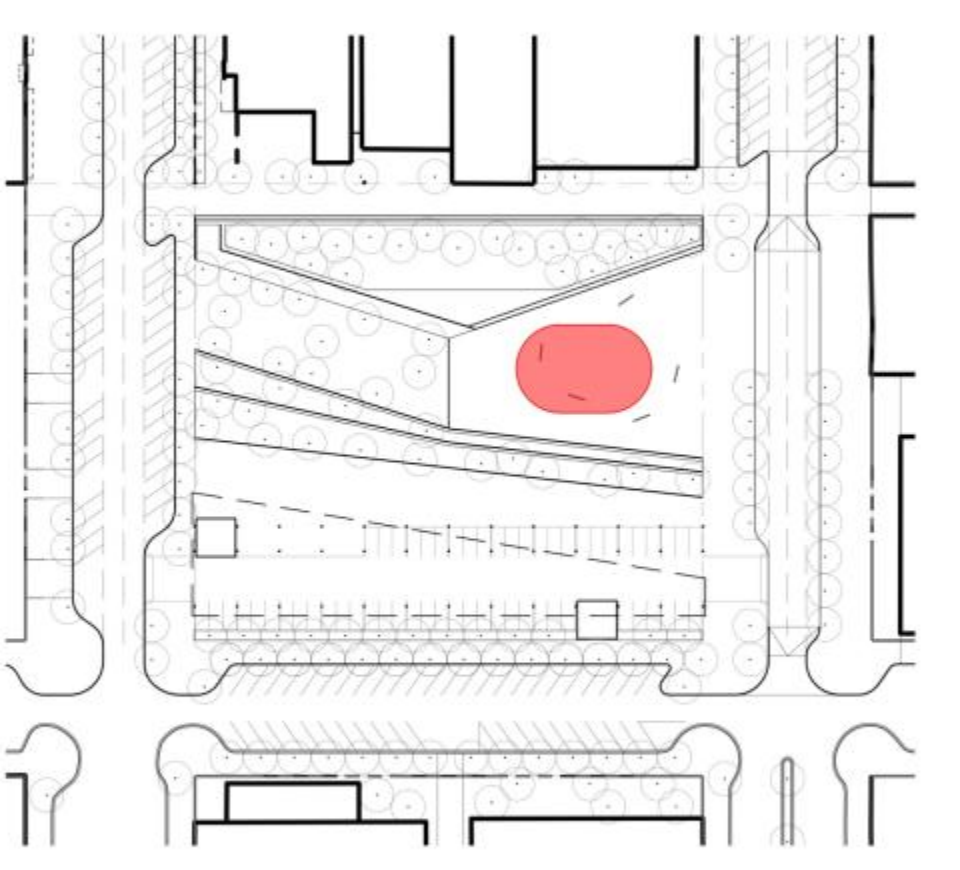


Outdoor Concert

(approximate minimum size)

Concert with seating for 100
and standing space for around
100

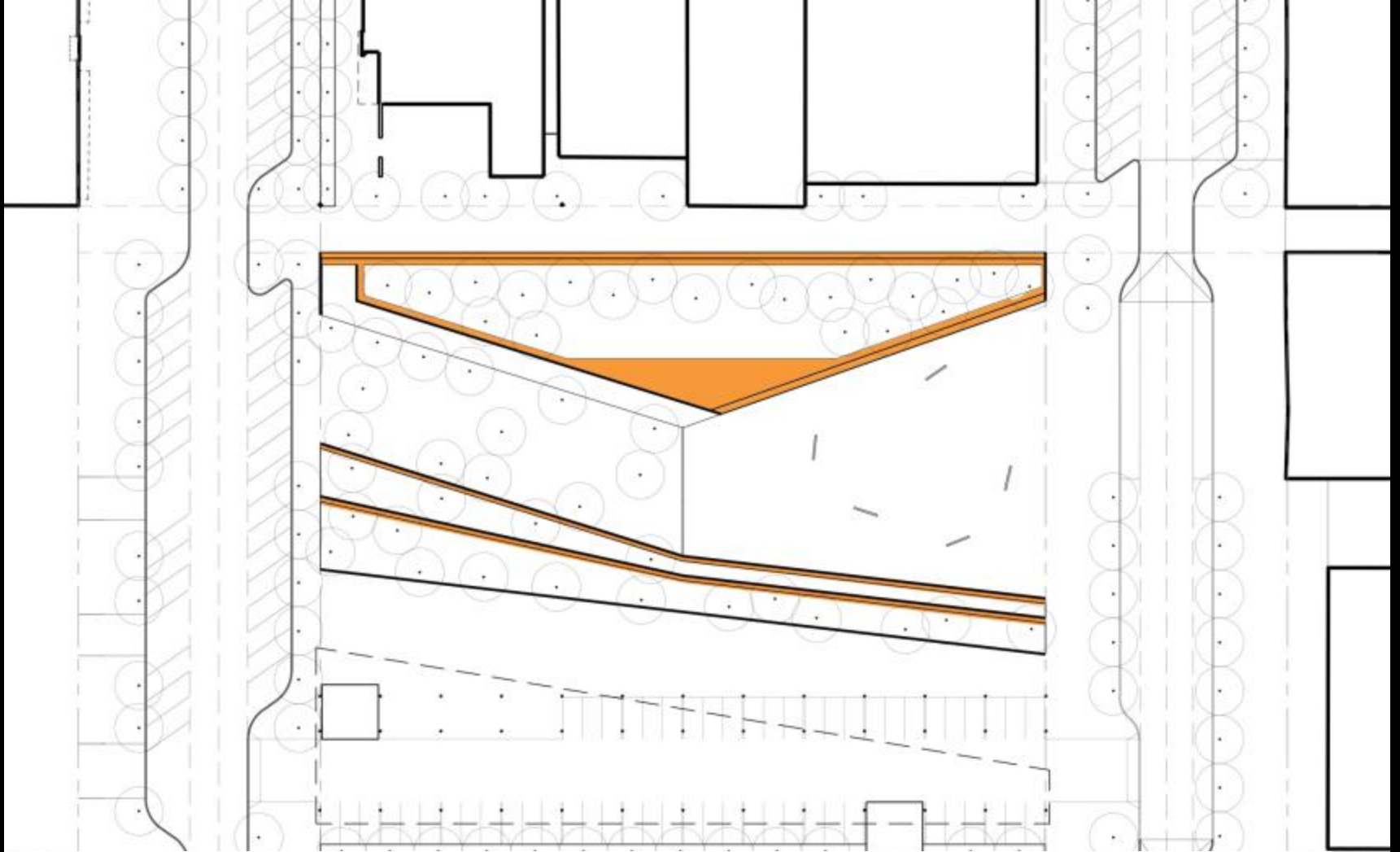




Skating Rink

(approximate minimum size)

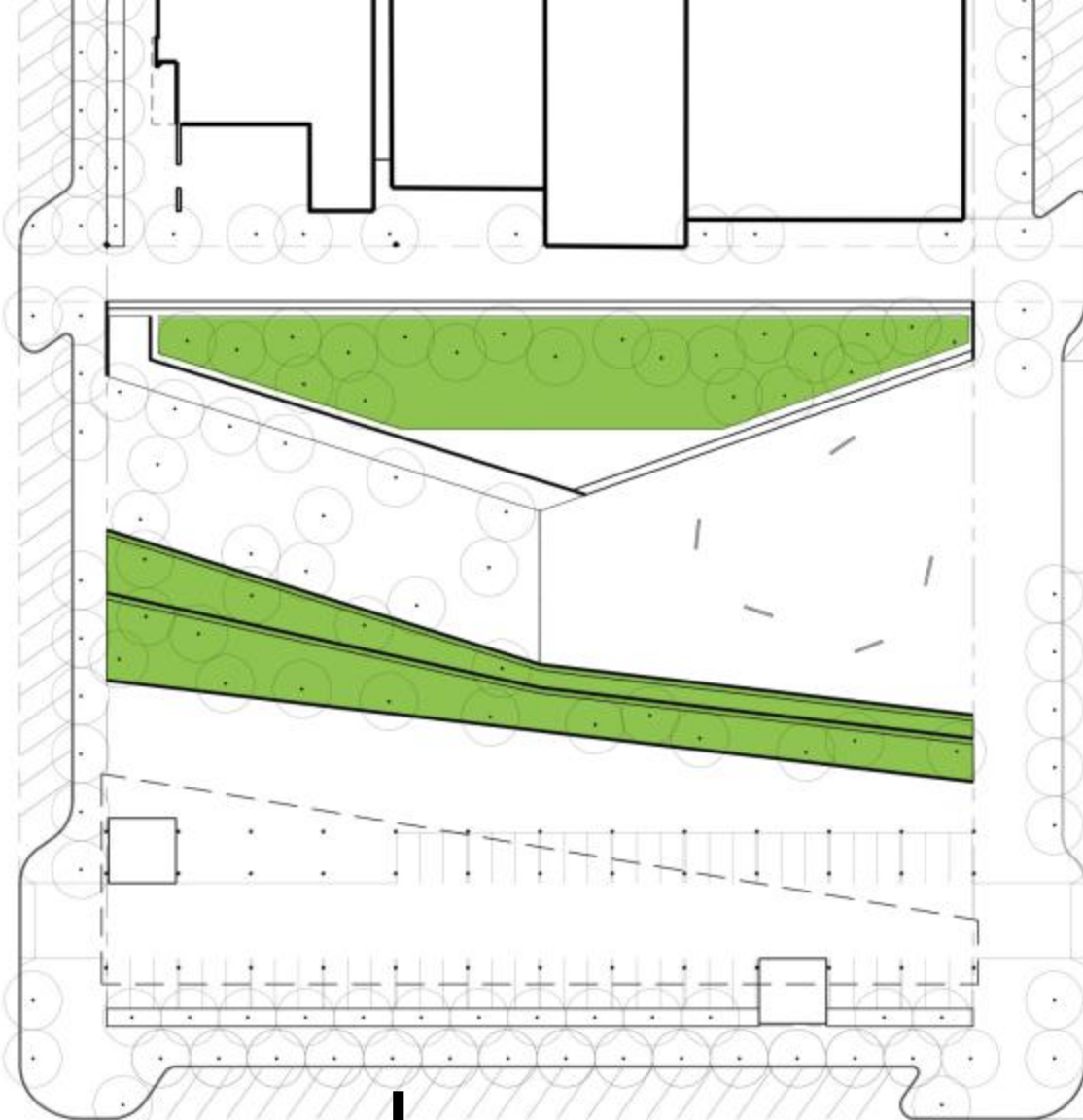




Seating steps &
terraces



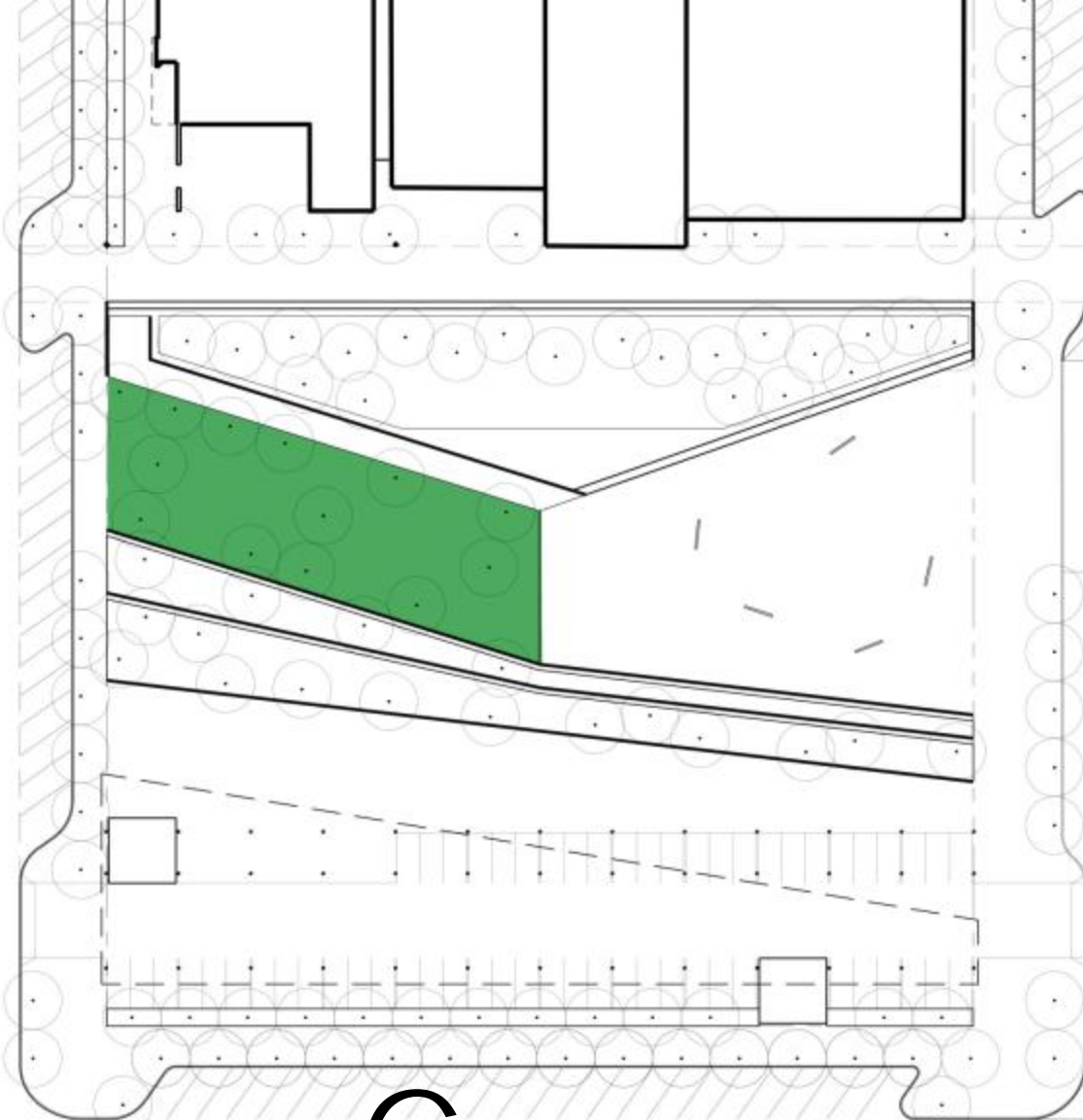




Lawn







Grove





Lighting



Love Letter to Yakima, Andy Behrle

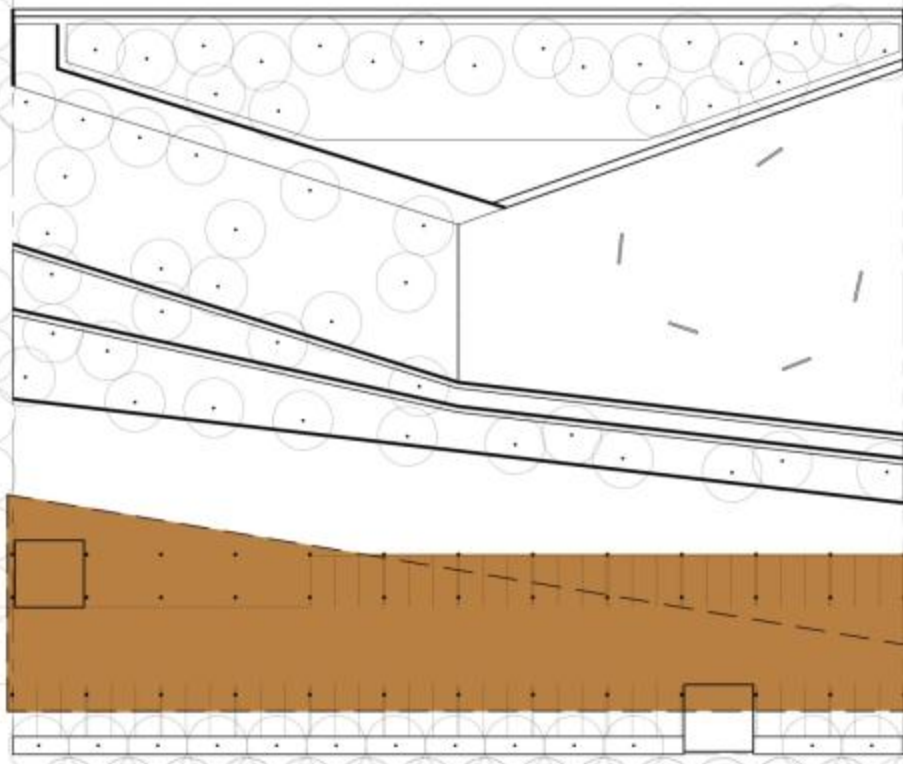




Photo credit: Piet Oudolf



Photo credit: Timothy Hursley



Shade Structure

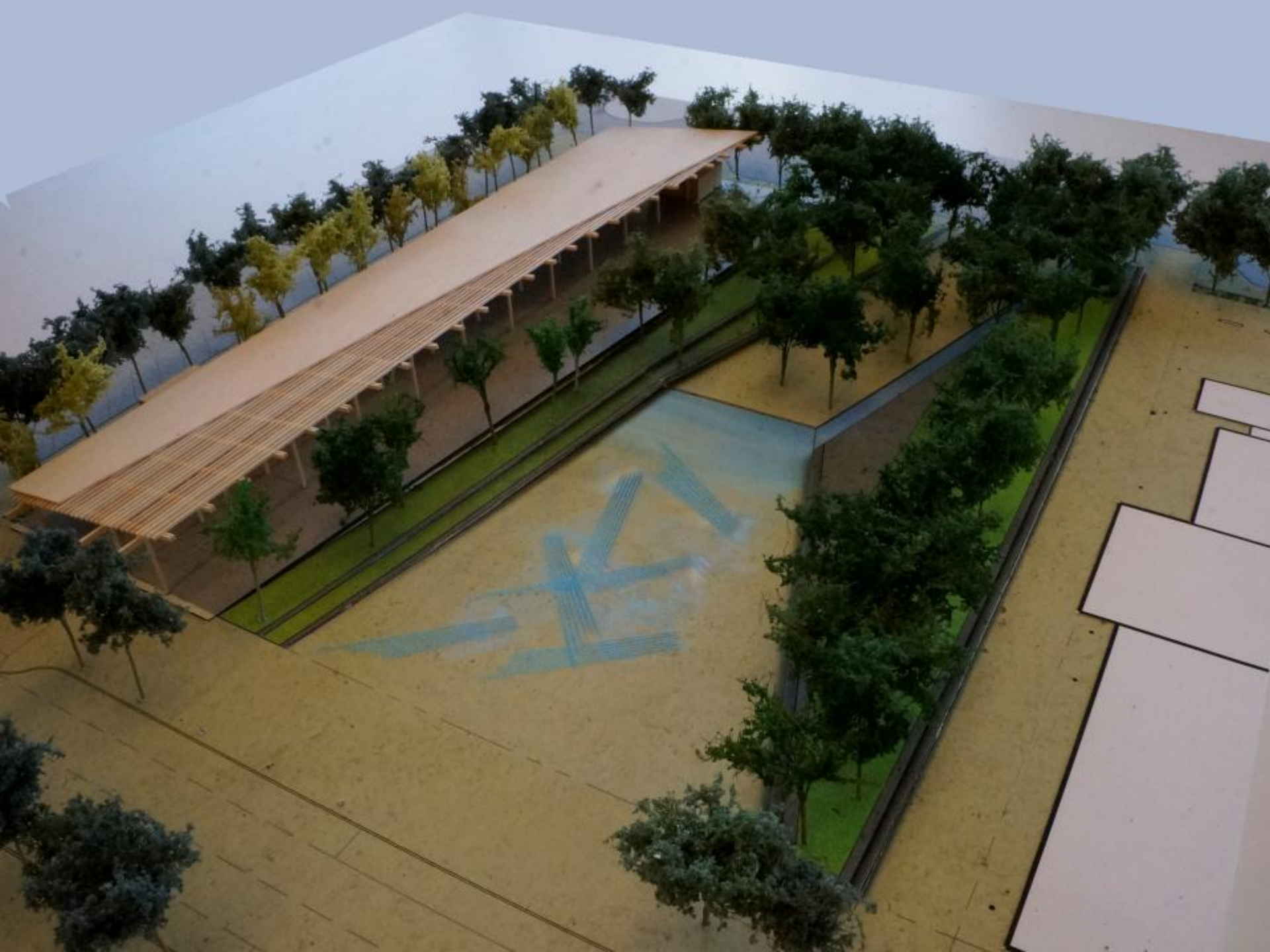






Market Hall





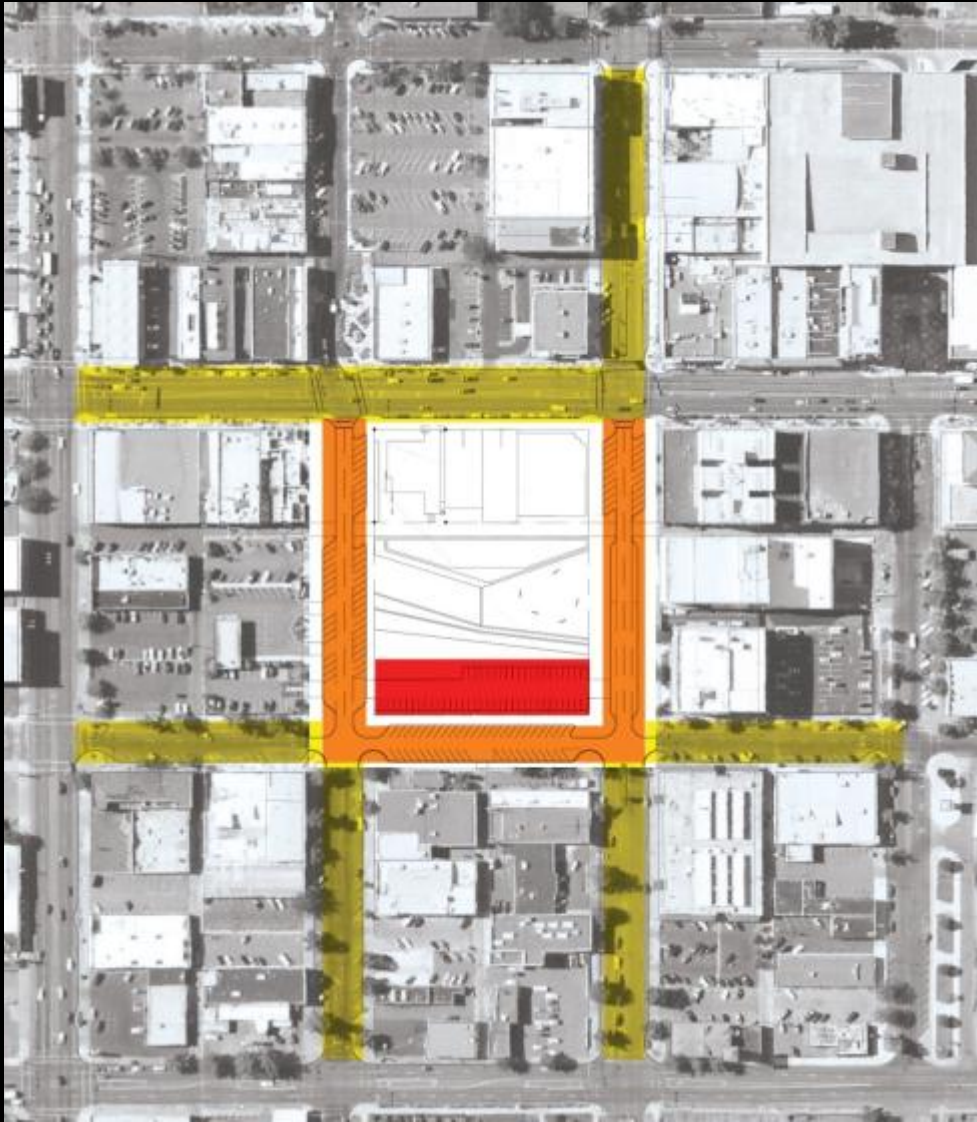










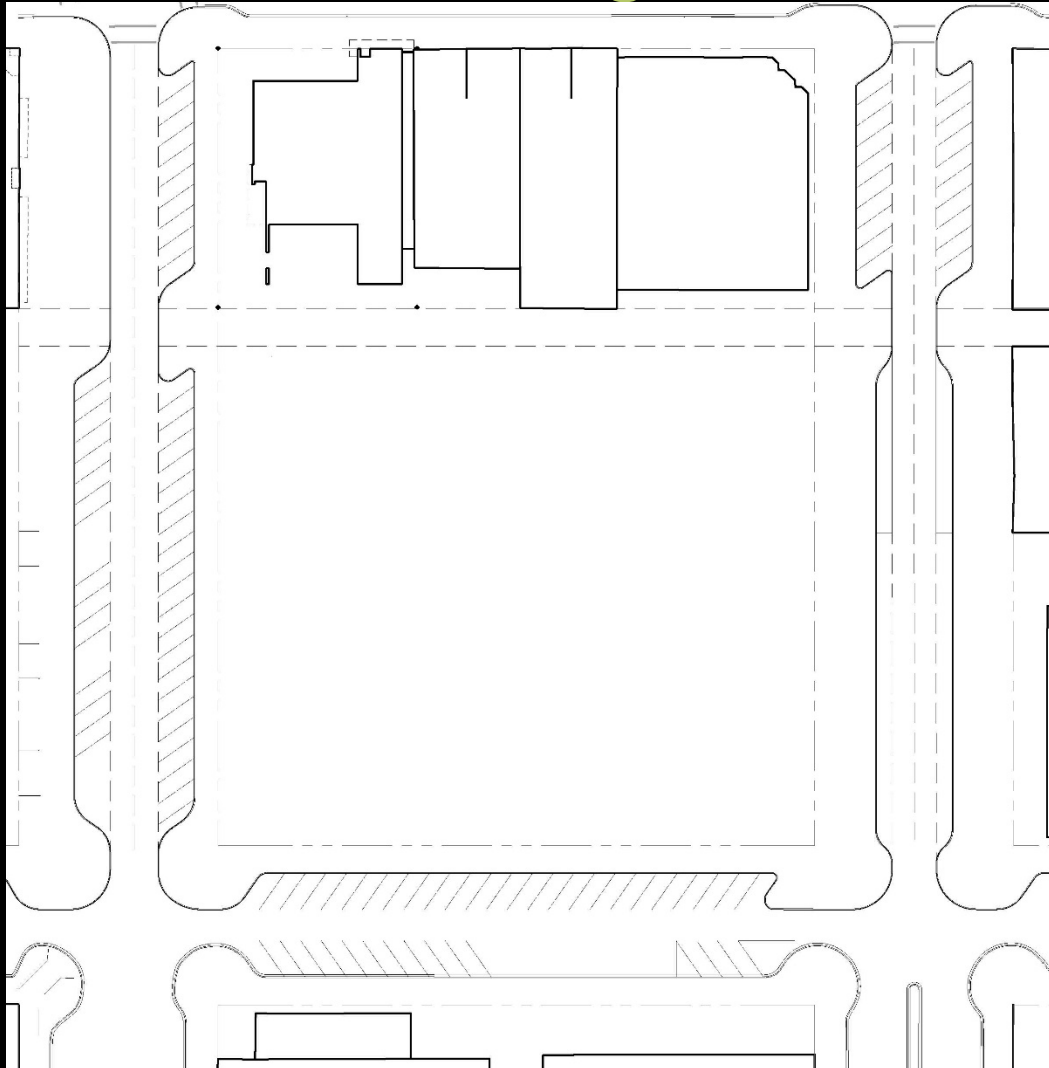


	Today	Proposed	Change
On-site	196	57	29%
Adjacent	41	124	302%
Within 1 block	180	238	132%
TOTAL	417	419	100%

Surrounding Streets

2nd St

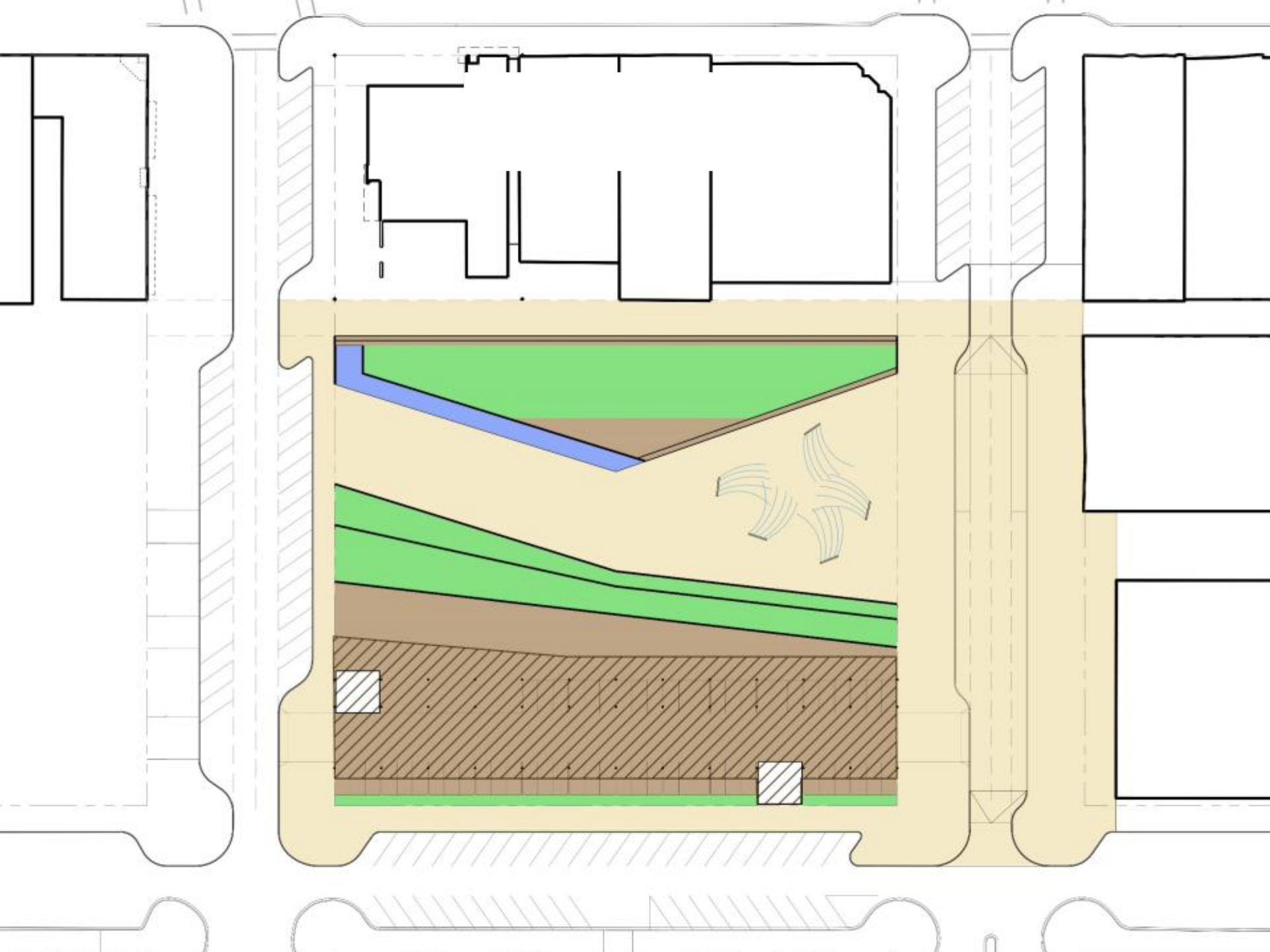
- Straighten street
- Add angled parking



3rd St

- Reduce to 2 lanes
- Add angled parking
- Drop off by Capitol Theater
- Parallel parking

Chestnut: Reduce lane and add angled parking





Grove



Flexible Plaza Space



Water



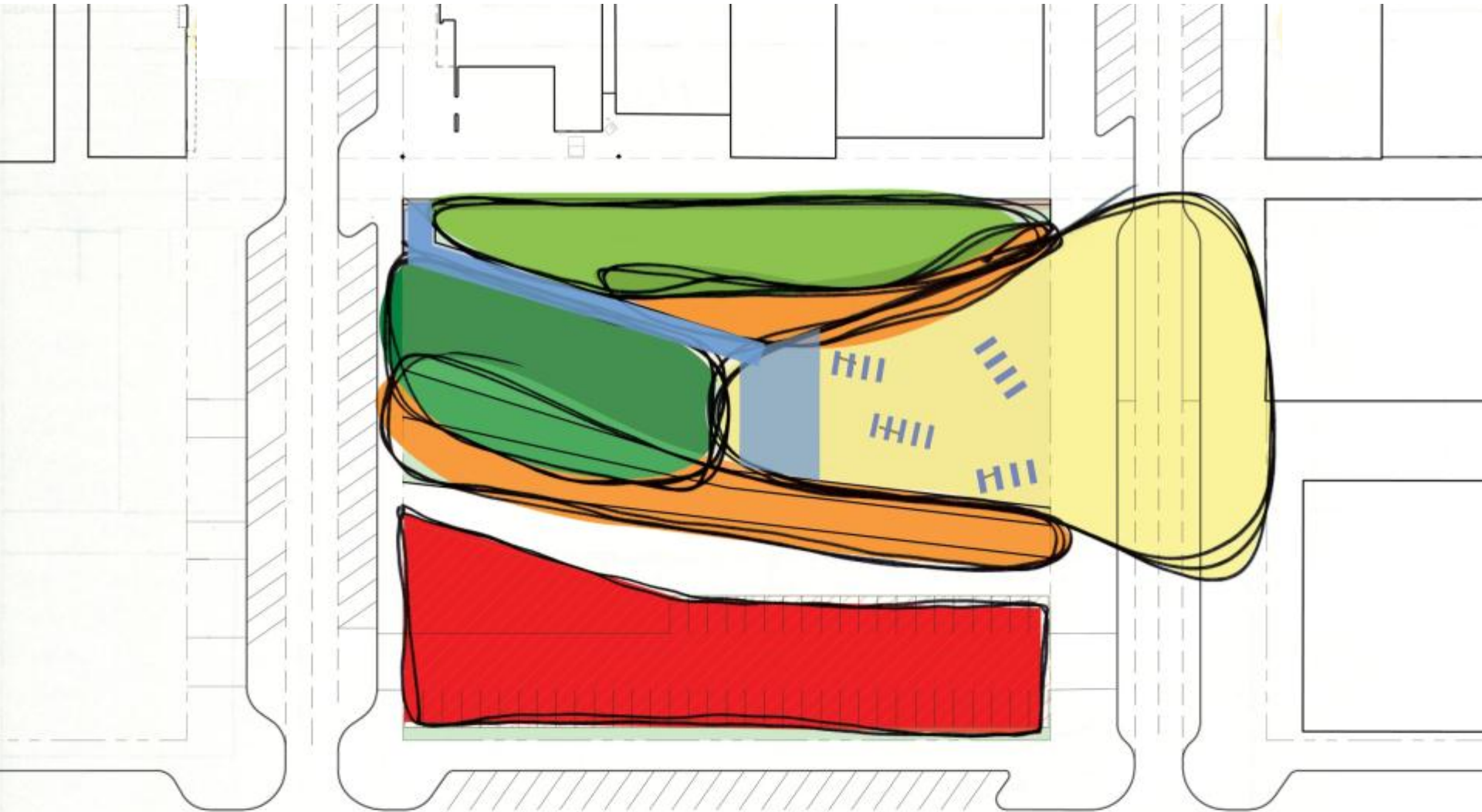
Seating Steps/Terraces



Shade Structure

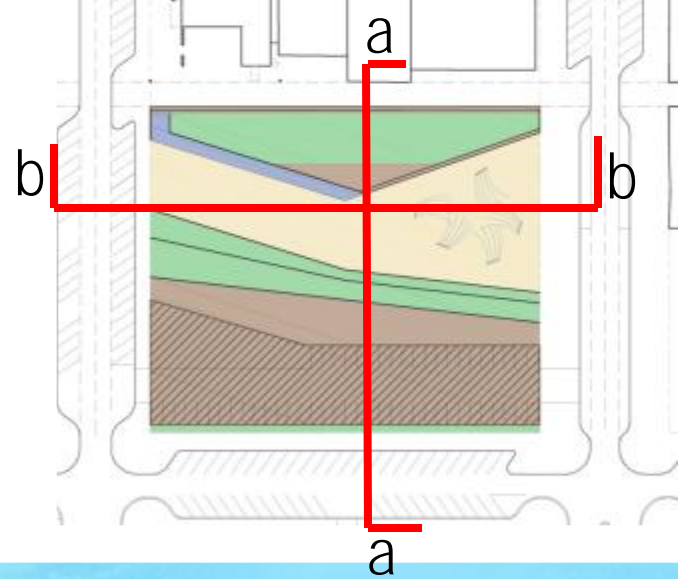


Lawn





Sections



Section a-a



Section b-b



GUSTAFSON GUTHRIE NICHOL



GUSTAFSON GUTHRIE NIELSEN

GUSTAFSON GUTHRIE NICHOL
Graham Baba Architects