

**CITY OF YAKIMA
MUNICIPAL ENGINEERING SERVICES
REQUEST FOR
STATEMENT OF QUALIFICATIONS**

The City of Yakima is inviting Statements of Qualifications (SOQ) from firms interested in providing professional engineering services for the following WSDOT funded Pedestrian and Bicycle Safety Program project: Wendy Baker Shared-Use Path. Services will include design work to complete PS&E to construct approximately 2,900 feet of a shared-use path, high visibility crosswalks, bicycle intersection crossing markings, RRFBs, and bicycle wayfinding signing along Powerhouse Road. This work will include surveying, preparing the design plans and specifications, permitting, environmental documentation, and other work as needed. The contract for this work shall be on a cost-plus fixed fee basis, and the city of Yakima reserves the right to retain the services of the successful firm(s) for any subsequent phases (R/W, CN) associated with this project. These improvements are intended to be constructed in 2027.

Project details can be found at the following web site:

<https://www.yakimawa.gov/services/engineering/rfps-rfqs/>

SOQs shall be limited to ten (10) pages front and back and shall include the following information: key personnel, familiarity with City of Yakima and/or other similar municipalities, familiarity with WSDOT standards, firm experience with PS&E designing pedestrian and bicycle facilities and crossings, experience with state funded projects, ability to meet schedule, and past performance/references. Statement of Qualifications will be evaluated on a competitive basis using the above criteria. The City will score the received Statement of Qualifications and may conduct interviews.

SOQs shall be received by 10:00 a.m., January 6th, 2026, **by email** to Dana Kallevig, City of Yakima Chief Engineer at Dana.Kallevig@yakimawa.gov. Questions regarding the RFQ should be directed to Dana Kallevig by email or at (509) 575-6048.

The City of Yakima, in accordance with Title VI of the Civil Rights Act of 1964, (78 Stat. 252, 42 U.S.C. 2000d to 2000d-4) and the Regulations, hereby notifies all bidders that it will affirmatively ensure that in any contract entered into pursuant to this advertisement, disadvantaged business enterprises will be afforded full and fair opportunity to submit bids in response to this invitation and will not be discriminated against on the grounds of race, color, or national origin in consideration for an award.

Qualified disadvantaged, minority, and women-owned consultants are encouraged to respond. The City of Yakima is an equal opportunity employer.

Project Description: Construct High-visibility Crosswalk, Stop Line at Uncontrolled Crosswalks, Rectangular Rapid Flashing Beacon, Bicycle Intersection Crossing Markings, Bicycle Wayfinding Signs and Markings, Shared-use Path

Detailed Project Description:

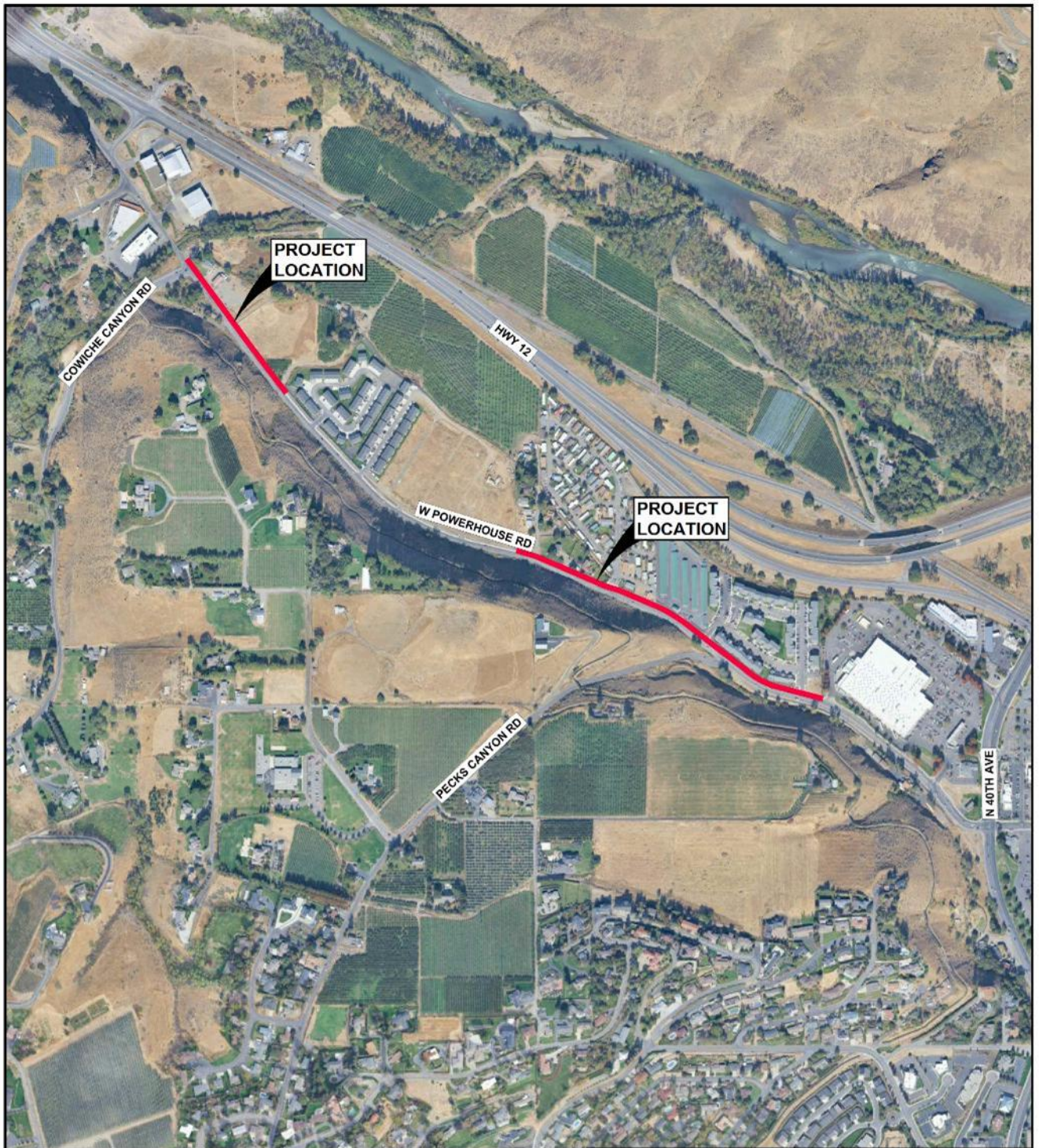
Intersection Improvements -

- 1) At the intersection of W Powerhouse Rd and Cowiche Canyon Rd, NW leg install:
 - a. Rectangular rapid flashing beacon
 - b. High-visibility crosswalk
 - c. ADA curb ramp
- 2) At mid-block of W Powerhouse Rd (Naches Cowiche Canal Association driveway), install:
 - a. Bicycle intersection crossing markings
- 3) At mid-block of W Powerhouse Rd (Riverview Manor manufactured/mobile home park driveway), install:
 - a. ADA curb ramps (2)
- 4) At mid-block of W Powerhouse Rd, (Powerhouse Ministorage driveway approx. 300' west of Pecks Canyon Rd), install:
 - a. Bicycle intersection crossing markings

Linear Improvements:

On W Powerhouse Rd, north side, between Fred Meyer driveway, approximately 1200' west of N 40th Ave, and Cowiche Canyon Rd, install:

- a. Shared-use path, ~2900'
 - i. For eastern half of project, to the manufactured/mobile home park entrance, widen existing sidewalk with asphalt pathway to ~10' total width, ~1400'
 - ii. For the middle portion of the project, from trailer park entrance to a tie-in with existing pathway ~100' west of Ford Ave, 10' wide asphalt and 5' wide landscaped buffer, ~570'
 - iii. For the western third of the project, west end of the existing pathway to Cowiche Canyon Rd, 12' wide asphalt path and 5' wide landscaped buffer, ~950.
- b. Bicycle wayfinding signs and markings (6)



CITY OF YAKIMA
POWERHOUSE ROAD IMPROVEMENTS
VICINITY MAP

Anticipated Project Schedule:

- Begin PE February 26, 2026
- R/W Phase Obligation June 26, 2026
- CN Phase Obligation February 27, 2027

Submittal Requirements:

SOQs shall be limited to ten (10) pages front and back (20 pages digitally)

Email a PDF file of the submittal by 10:00 a.m., January 6th, 2026, to:

Mr. Dana Kallevig,

City of Yakima Chief Engineer

Dana.Kallevig@yakimawa.gov

Subject: Wendy Baker Shared-Use Path Statement of Qualifications

Selection Process:

Statement of Qualifications will be evaluated on a competitive basis using the following criteria:

- Key personnel
- Familiarity with City of Yakima and/or other similar municipalities
- Familiarity with WSDOT standards
- Firm experience with PS&E designing pedestrian and bicycle facilities and crossings
- Experience with state funded projects
- Ability to meet schedule
- Past performance/references

The City may also conduct interviews.

Dates of Publication: December 9th and December 16th, 2025

Post: State Office of Minority and Women's Business Enterprise (OMWBE)