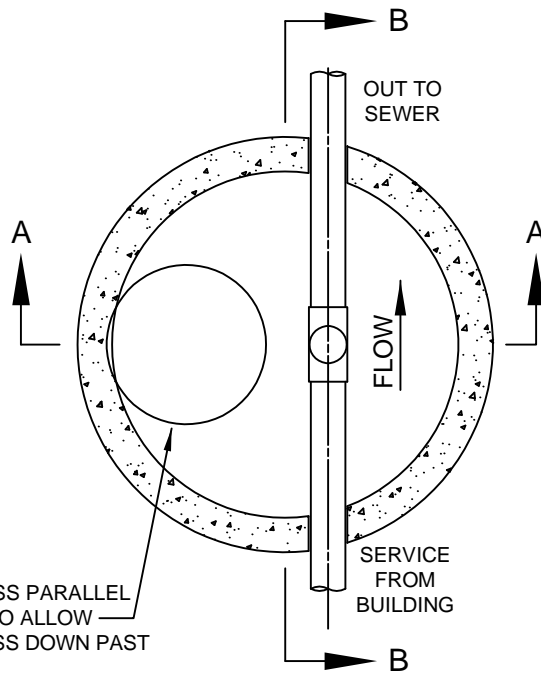


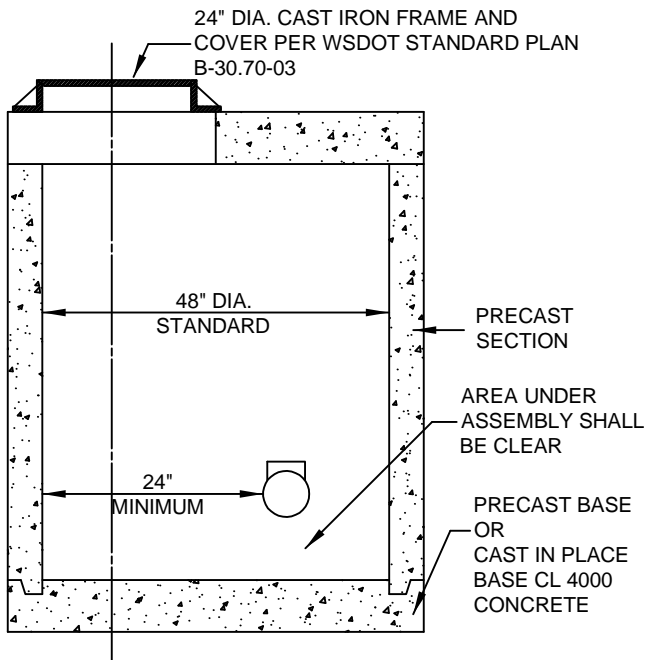
**NOTES**

1. MANHOLES SHALL BE STANDARD REINFORCED CONCRETE SECTIONS 48" I.D. x 4'-0". IF MORE THAN ONE SECTION IS USED, INSTALL RAMNEK AT JOINTS.
2. INSTALL RAMNEK SEAL UNDER COVER FRAME ENTIRELY AROUND MANHOLE.
3. SAMPLING PORT IS TO BE LOCATED IN A LOCATION WHERE IT CAN BE ACCESSED AT ANY TIME. LOCATION AS APPROVED BY CITY ENGINEER
4. NO OTHER APPARATUS SHALL BE INSTALLED IN THE SAMPLING PORT MANHOLE.
5. SAMPLING PORT MANHOLE LID SHALL NOT BE OF A BOLT DOWN TYPE BUT SHALL BE CAST IRON ONLY AS APPROVED BY THE CITY ENGINEER.

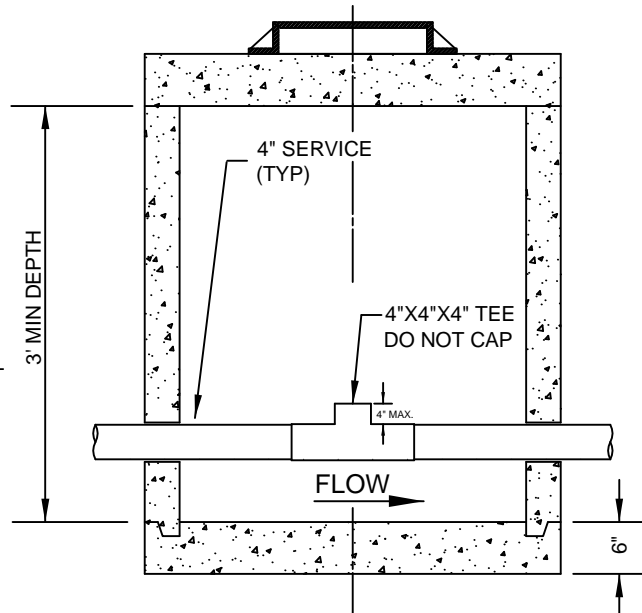
PLACE MANHOLE ACCESS PARALLEL TO THE SERVICE PIPE TO ALLOW SAMPLER CLEAR ACCESS DOWN PAST THE SERVICE.



**PLAN VIEW**



**SECTION A-A**



**SECTION B-B**



**City Of Yakima  
Engineering Division**

129 North Second Street  
Yakima, Washington

City of Yakima - Standard Detail

**SHALLOW SAMPLING MANHOLE S9**

NOT TO SCALE  
Revision 6-2017