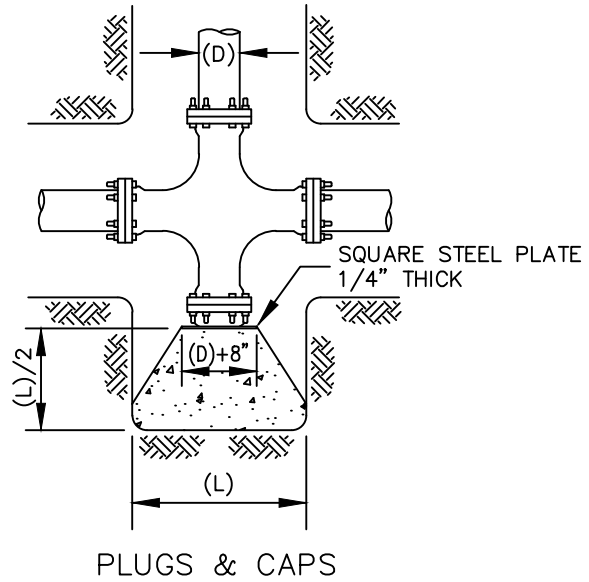


SIDE VIEW (TYPICAL ALL BLOCKING)



NOTES

1. FORM CONCRETE TO ALLOW REMOVAL OF BOLTS.
2. ALL FITTINGS AND/OR PIPE MAKING DIRECT CONTACT WITH CONCRETE SHALL BE WRAPPED WITH 4 MIL. POLYETHYLENE SHEETING PRIOR TO PLACEMENT OF CONCRETE.
3. (D) IS NOMINAL PIPE DIAMETER. THE TABLE OF END AREAS IS BASED ON AN ALLOWABLE SOIL BEARING PRESSURE OF 1500 psf. THE ENGINEER SHALL DETERMINE THE REQUIRED END AREAS.
4. ALL CONCRETE IS TO BE CLASS "B" CONCRETE AND IS TO BE POURED IN PLACE.
5. MECHANICAL RESTRAINT OF FITTINGS AND PIPE WITH ROMAC "GRIP RING" AND FIELD-LOK GASKETS ALLOWED IN LIEU OF THRUST BLOCK AS APPROVED BY ENGINEER.
6. VERTICAL BENDS TO BE RESTRAINED WITH MECHANICAL FITTING AND PIPE RESTRAINS (ROMAC "GRIP RING" AND FIELD-LOK GASKETS) AS DESIGNED/APPROVED BY ENGINEER.

MINIMUM END AREAS			
PIPE SIZE (D)	TEES & PLUGS	45° BENDS	22 1/2° BENDS
6"	5.1 sq. ft.	3.9 sq. ft.	2.0 sq. ft.
8"	8.8 sq. ft.	6.7 sq. ft.	3.4 sq. ft.
10"	14.3 sq. ft.	11.0 sq. ft.	5.6 sq. ft.
12"	20.4 sq. ft.	15.7 sq. ft.	7.9 sq. ft.
14"	27.7 sq. ft.	21.2 sq. ft.	10.7 sq. ft.
16"	35.8 sq. ft.	27.5 sq. ft.	13.9 sq. ft.

W6 TYPICAL CONCRETE BLOCKING  
 NTS City of Yakima - Engineering Division

APPROVED: 11.15.16