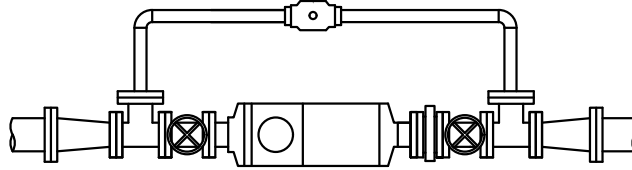
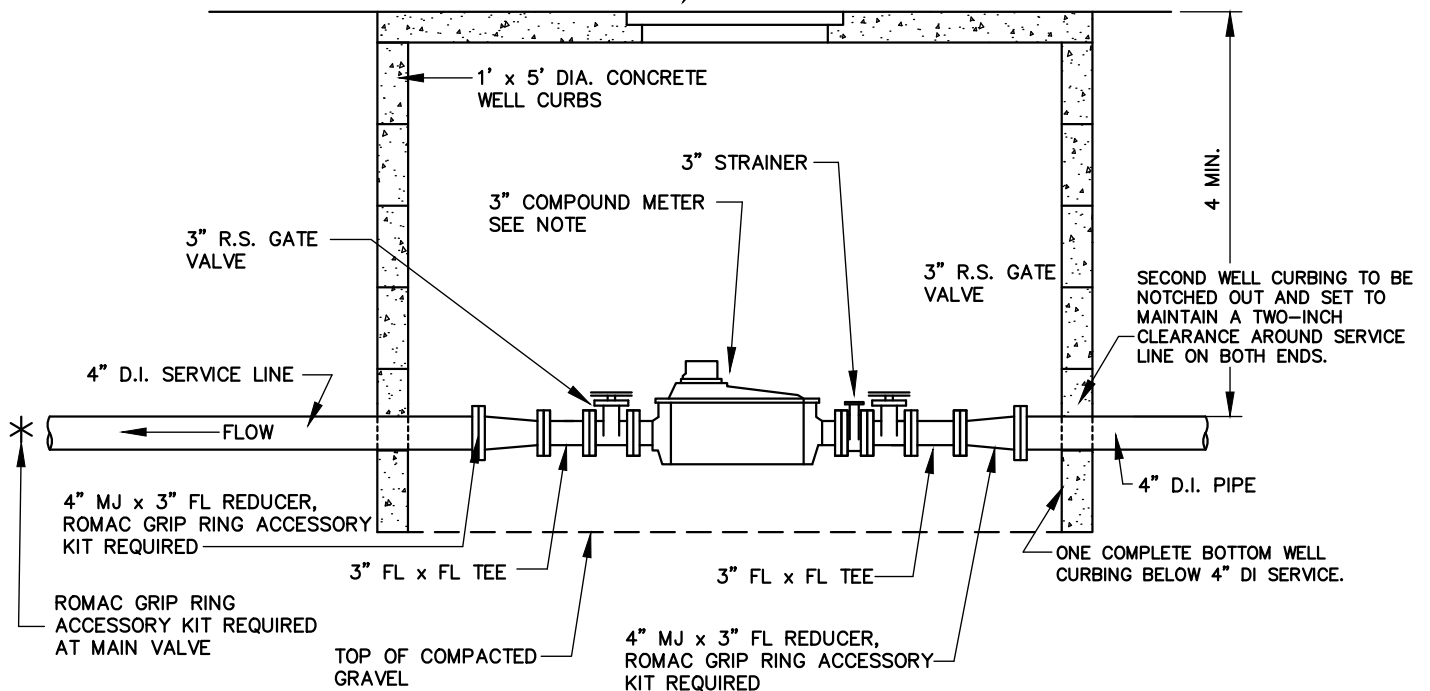


1 1/2" BALL VALVE
NO HANDLE & LOCKABLE



PLAN VIEW

CITY OF YAKIMA STANDARD
PREFABRICATED COVER SECTION
TO BE FURNISHED BY CITY



ELEVATION VIEW

NOTES:

1. 3" COMPOUND METER SHOWN. IF LARGER THAN 3" COMPOUND METER IS USED, RESIZE THE SERVICE LINE, GATE VALVES AND TEES TO APPROPRIATE SIZE AND DELETE THE REDUCERS.
2. BOLLARDS MAY BE REQUIRED AT THE DISCRETION OF THE ENGINEER OR INSPECTOR TO PROTECT THE CITY WATER SYSTEM. SEE STD. DETAIL W7.



City Of Yakima
Engineering Division

129 North Second Street
Yakima, Washington

City of Yakima - Standard Detail
COMPOUND METER INSTALLATION

NOT TO SCALE
Revision 05-2025

W9