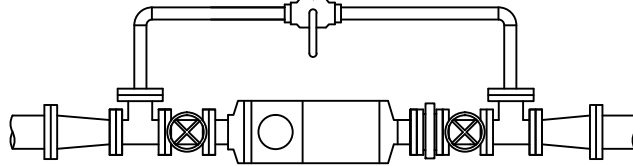
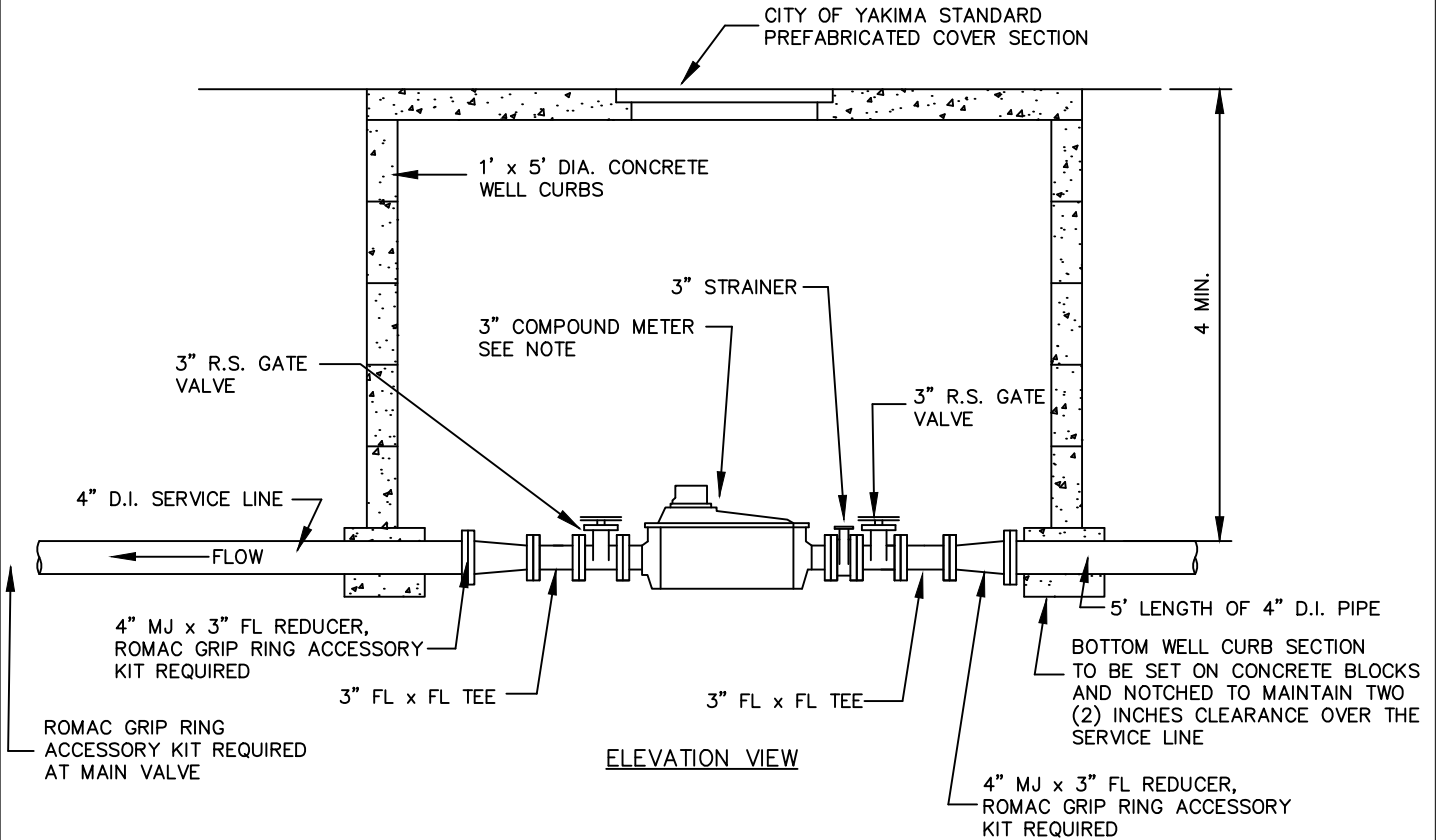


1 1/2" BALL VALVE



PLAN VIEW

CITY OF YAKIMA STANDARD
PREFABRICATED COVER SECTION



ELEVATION VIEW

NOTES

1. 3" COMPOUND METER SHOWN. IF LARGER THAN 3" COMPOUND METER IS USED, RESIZE THE SERVICE LINE, 90° BENDS, GATE VALVES AND TEES TO APPROPRIATE SIZE AND DELETE THE REDUCERS.

W9 COMPOUND METER INSTALLATION
NTS City of Yakima - Engineering Division

APPROVED: 11.15.16