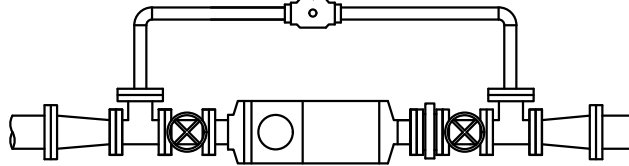
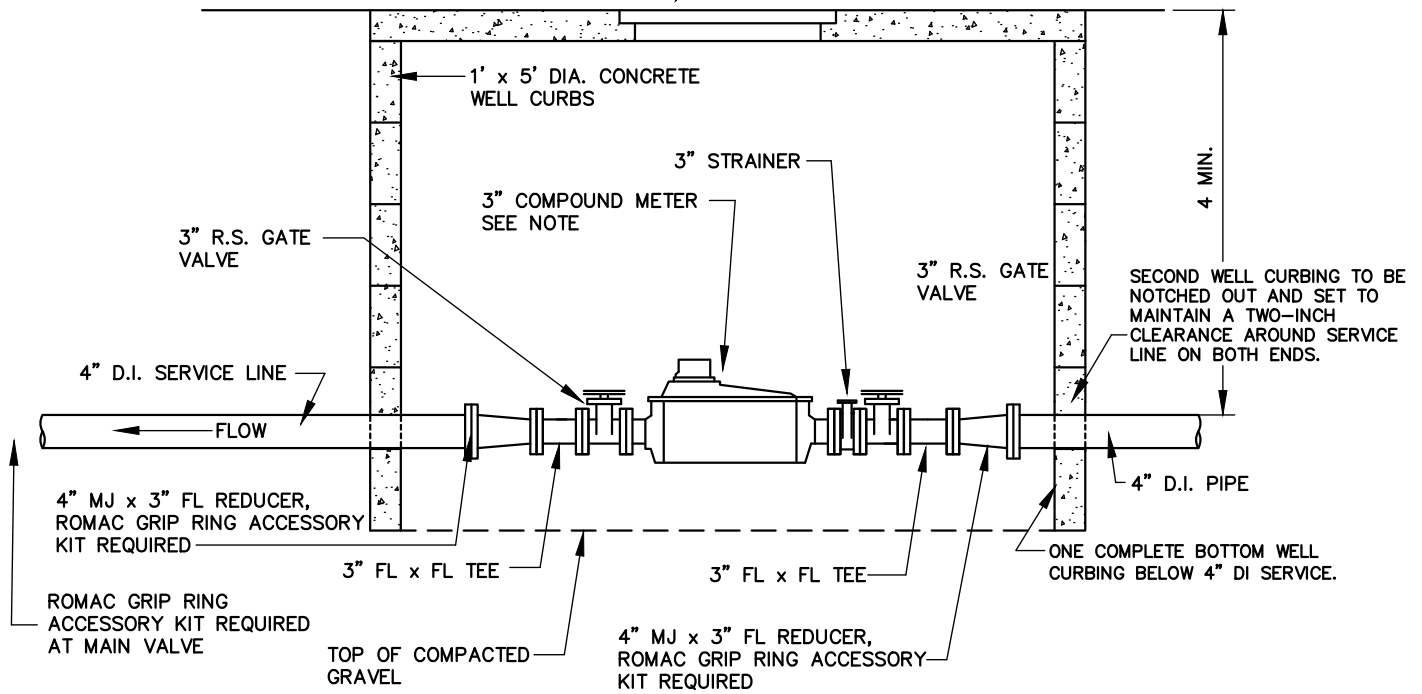


1 1/2" BALL VALVE
NO HANDLE & LOCKABLE



PLAN VIEW

CITY OF YAKIMA STANDARD
PREFABRICATED COVER SECTION
TO BE FURNISHED BY CITY



NOTE

1. 3" COMPOUND METER SHOWN. IF LARGER THAN 3" COMPOUND METER IS USED, RESIZE THE SERVICE LINE, GATE VALVES AND TEES TO APPROPRIATE SIZE AND DELETE THE REDUCERS.

ELEVATION VIEW



City Of Yakima
Engineering Division

129 North Second Street
Yakima, Washington

City of Yakima - Standard Detail
COMPOUND METER INSTALLATION W9

NOT TO SCALE
Revision 11-2024