

Fruit and Produce Row Historic District

National Register of Historic Places

District Nomination

June 22, 2022 | Public Meeting



1929 view looking north along North 1st Avenue from the intersection with West Martin Luther King Jr. Boulevard.

Photograph by J. E. Stimson. Image property of the U.S. Bureau of Reclamation.



National Register of Historic Places

Districts – Sites – Buildings – Structures – Objects





National Register Criteria for Evaluation

A. Be associated with important events that have contributed significantly to the broad pattern of our history; or

B. Be associated with the lives of persons significant in our past; or

C. Embody the distinctive characteristics of a type, period or method of construction; or represent the work of a master; or possess high artistic values; or represent a significant and distinguishable entity whose components may lack individual distinction; or

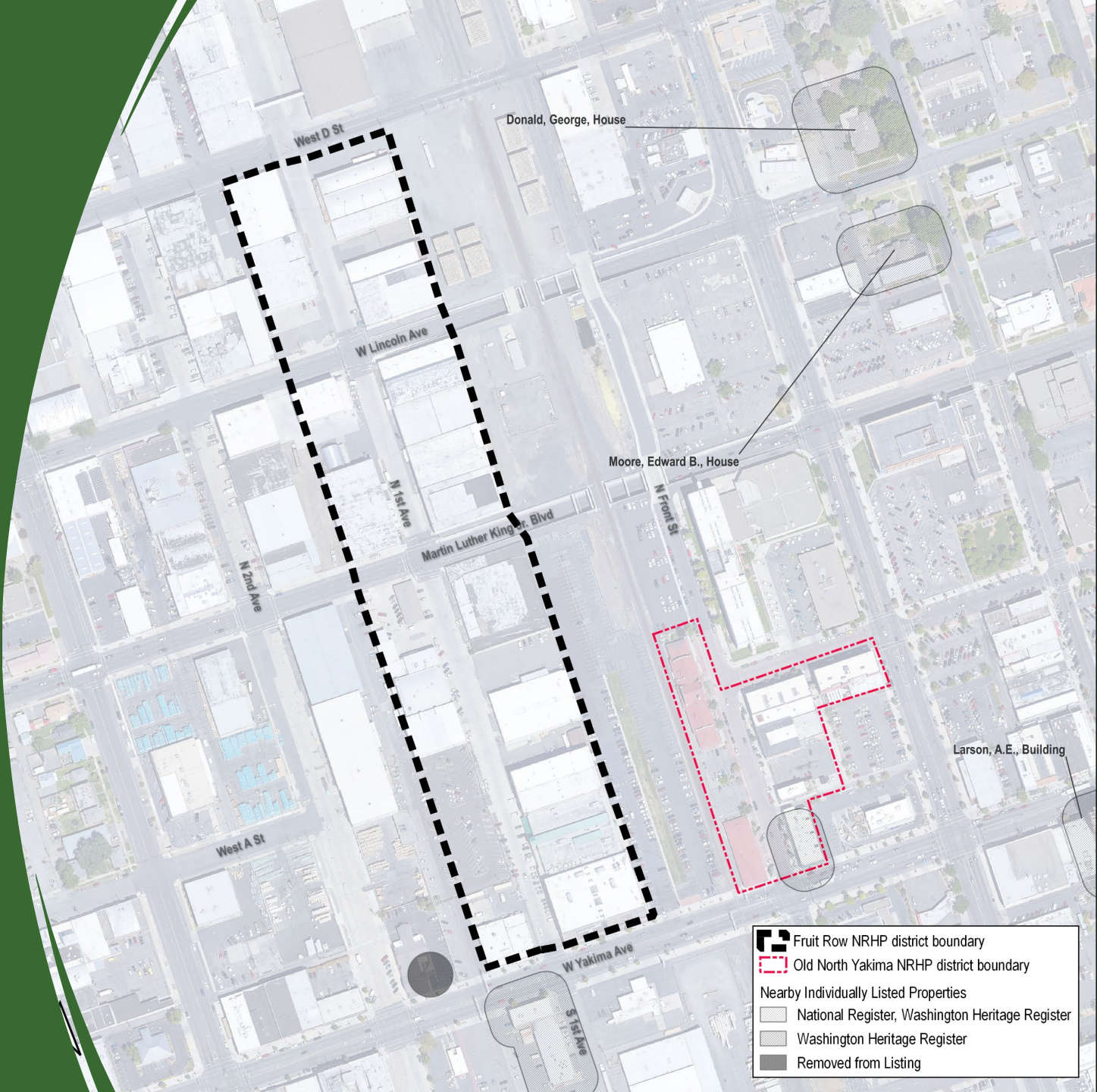
D. Have yielded, or may be likely to yield, information important in prehistory or history



Integrity

- Location (*moved?*)
- Setting (*surrounding character*)
- Design
- Materials
- Workmanship
- Feeling (*active industrial, working warehouse district?*)
- Association (*the place where the event occurred*)


Fruit and Produce Row Historic District




Donald, George, House


Moore, Edward B., House


Larson, A.E., Building


 Fruit Row NRHP district boundary

 Old North Yakima NRHP district boundary

Nearby Individually Listed Properties

 National Register, Washington Heritage Register

 Washington Heritage Register

 Removed from Listing

Period of Significance

Ca. 1898 to 1969



309 North First Avenue



132 North First Avenue



Warehouse Development

Common and Cold Storage



Common

- Large interior volumes
- Passive insulation to maintain temperatures



Cold Storage

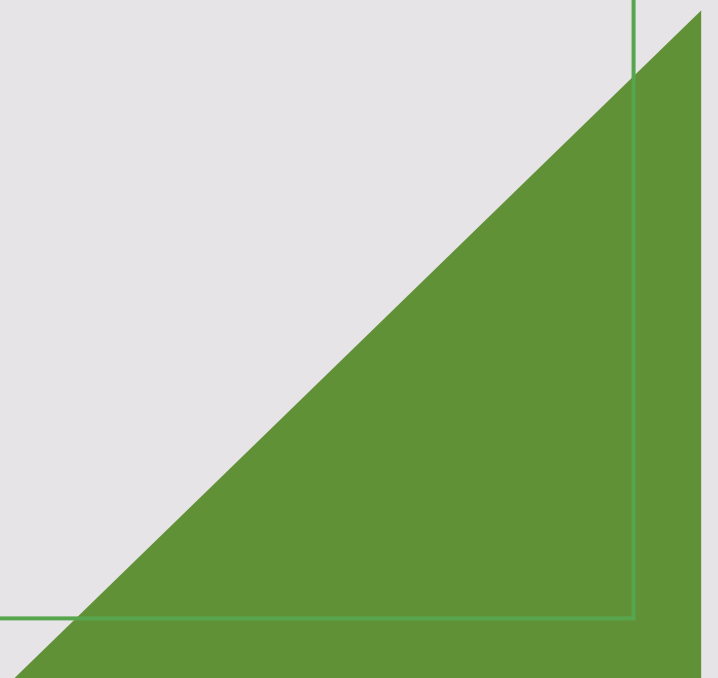
- More expensive to build
- Large interior volumes
- Mechanical cooling systems
- Insulated building





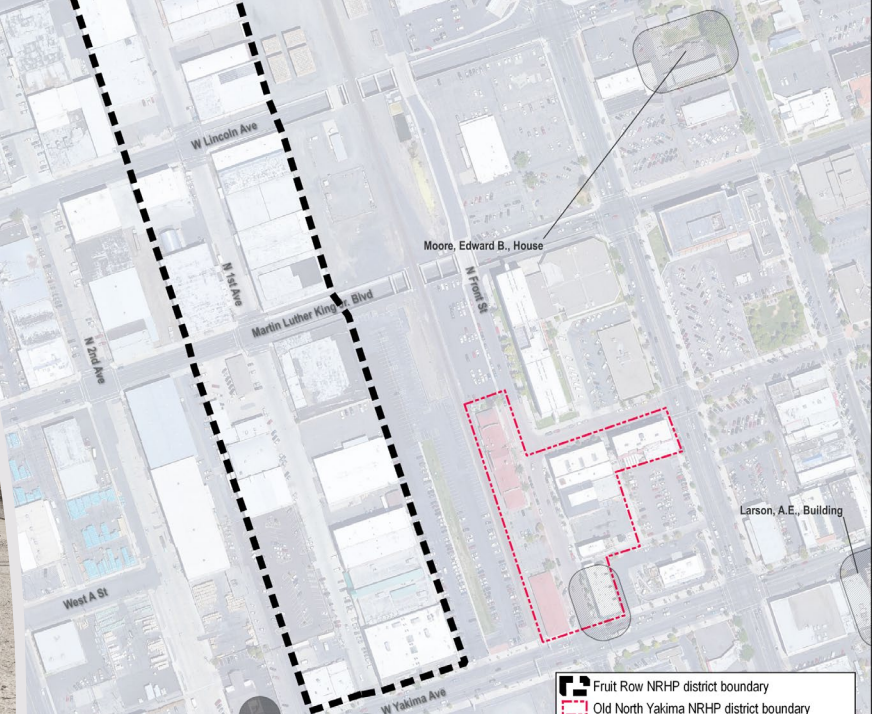
Economy and Technology

Commerce, Industry, and Transportation



Distribution Center

- Deeply connected with the city of Yakima's economy
- Warehouses reflect the importance of the agricultural industry in the valley
- Non-agricultural warehouses connect with other significant industries



Cold Storage Technology

- Artificial ice production
- Progressive reduction in ammonia compressor systems
- Sawdust insulation



Artificial ice bays.



1923 Frink pressure gauge.



Subsequent, smaller compressor.



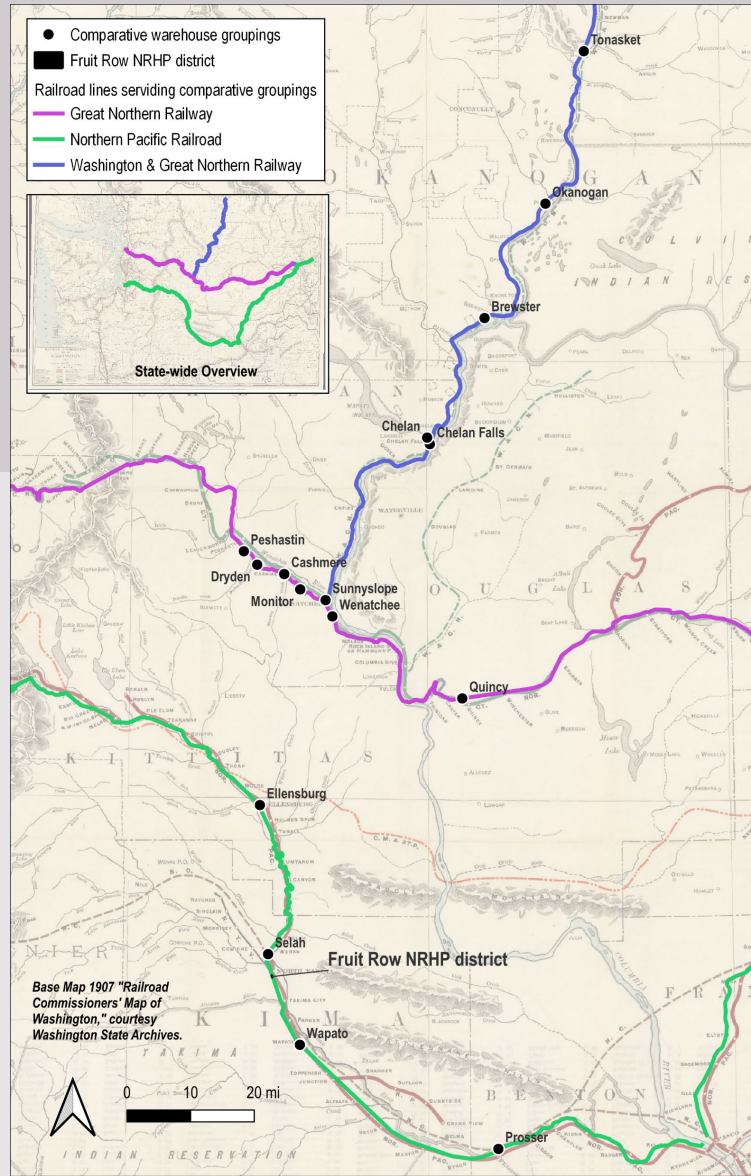
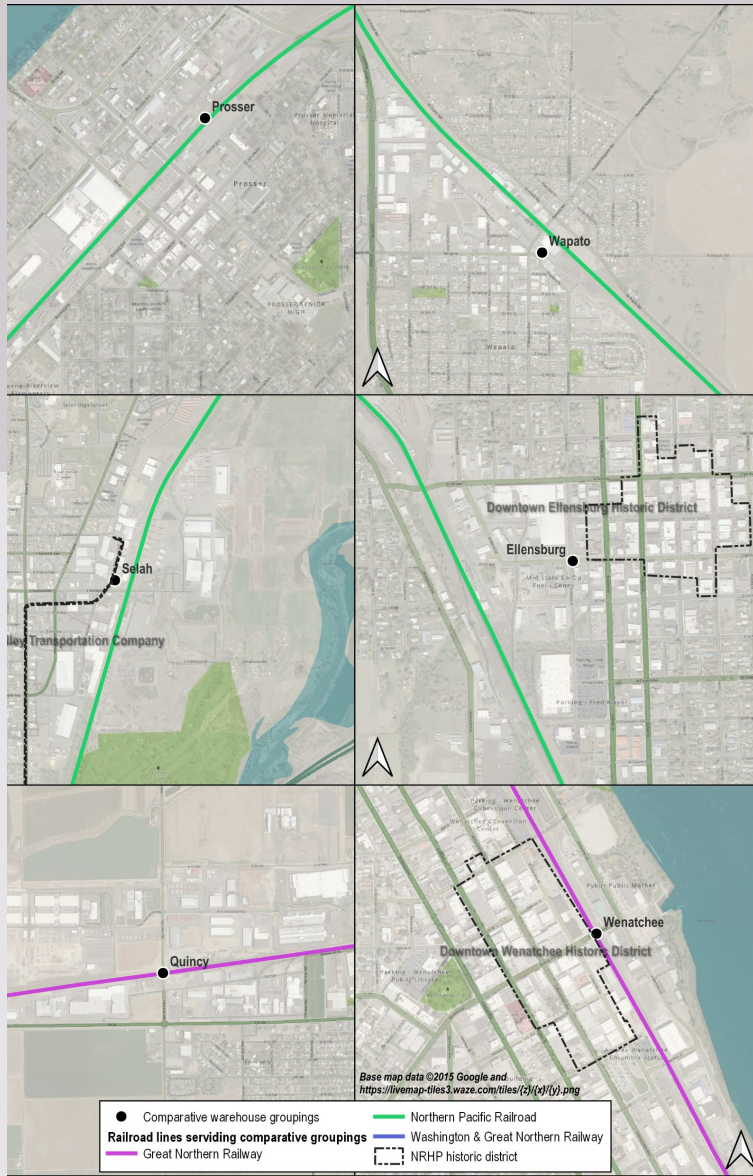
Early ammonia compressor.

Rails to Highways

- Rail sidings and space for icing rail cars
- Loading docks along the rail spurs
- Truck loading bays along the road
- Truck garage at West A Street and dedicated off-street truck loading bay at 130 N First Avenue

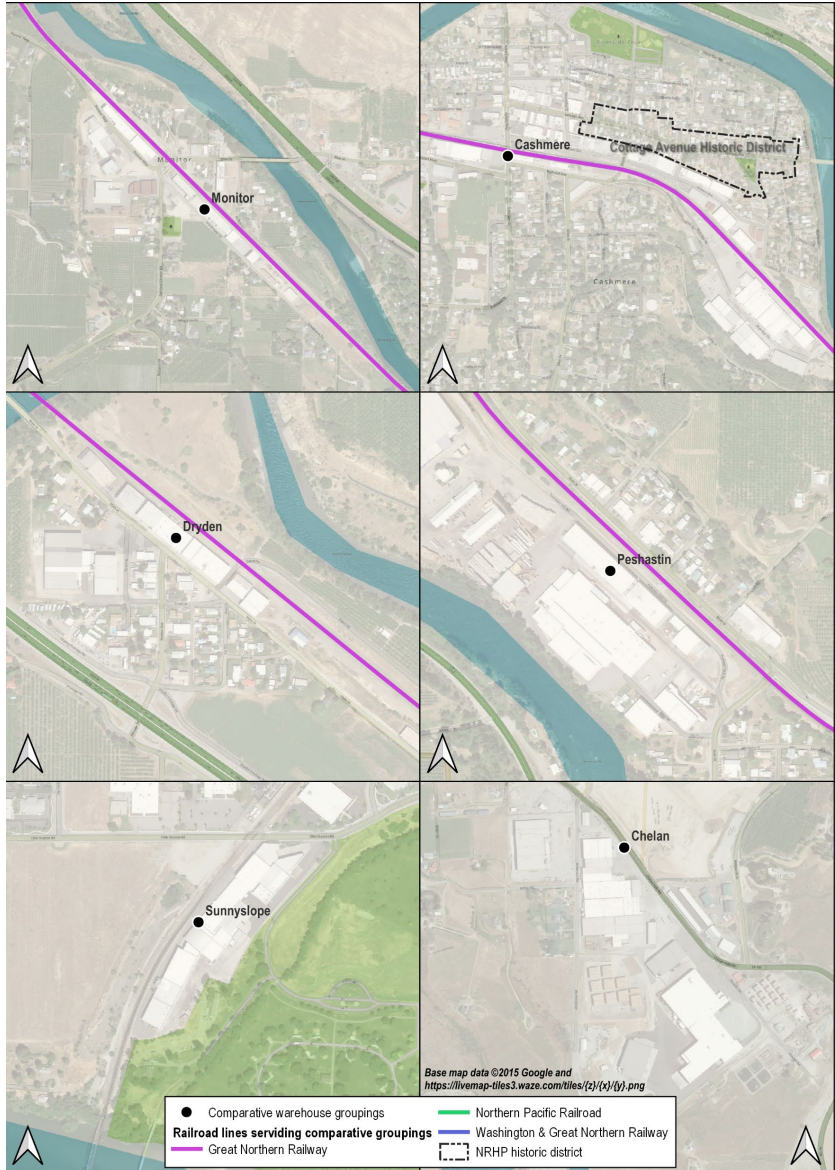


Main building of the Horticultural Union, Railroad Avenue and C Street. One of the



Comparable Warehouse Districts

- Northern Pacific Railroad
- Great Northern Railway
- Washington & Great Northern Railway





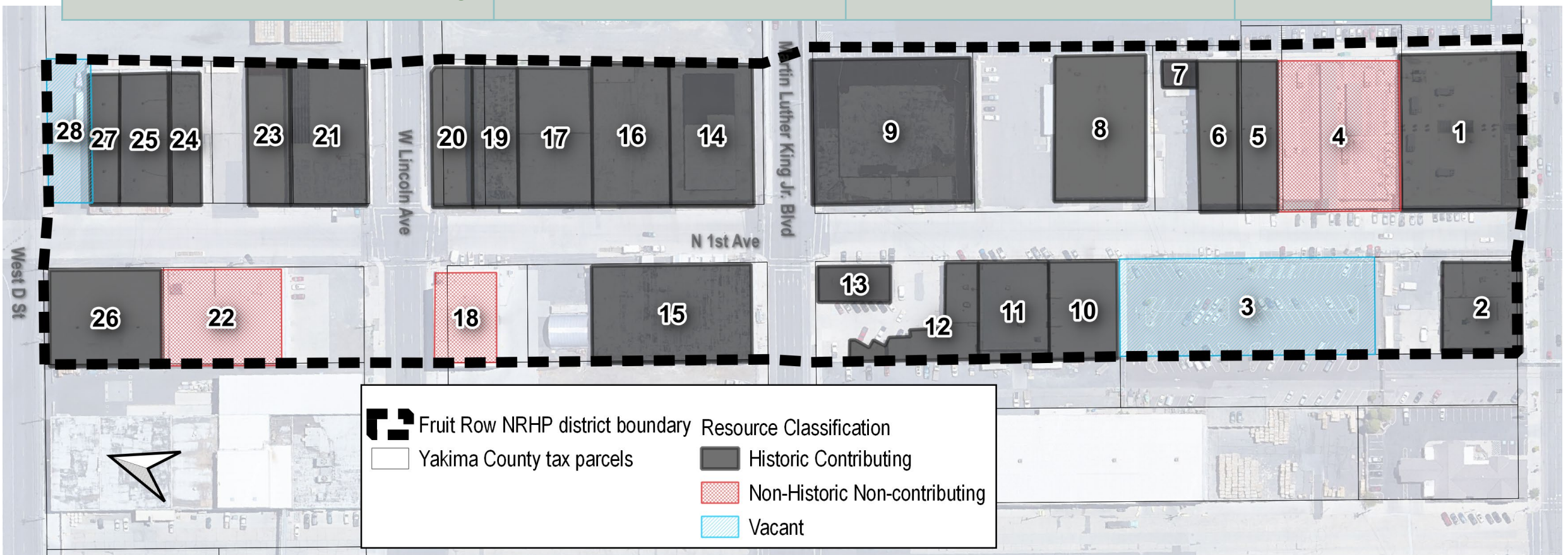
Resource Classification

Contributing and Non-contributing





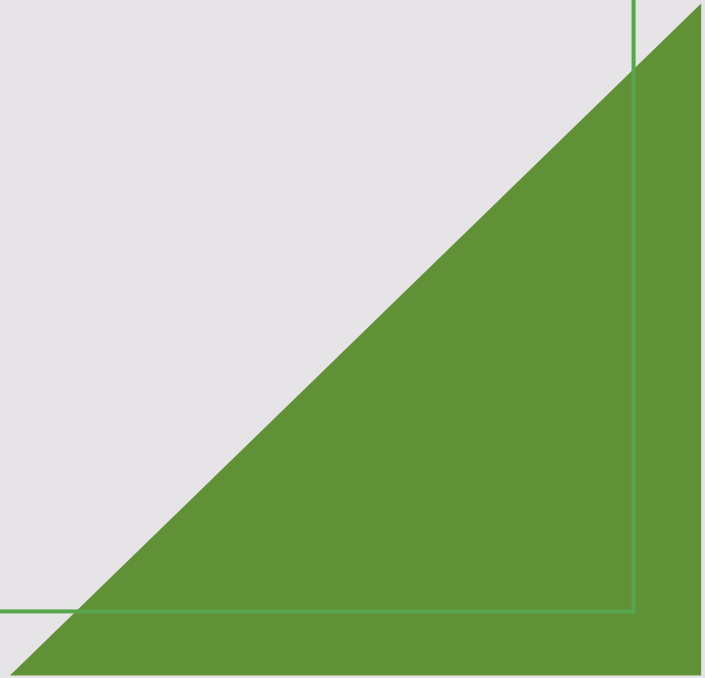
Status	50-years or older as of 2022	Built within period of significance (1898-1969)	Retains Historic Integrity
Historic, Contributing	Yes	Yes	Yes
Historic, non-contributing	Yes	Yes	No
Non-historic, non-contributing	Yes/No	No	N/A





History

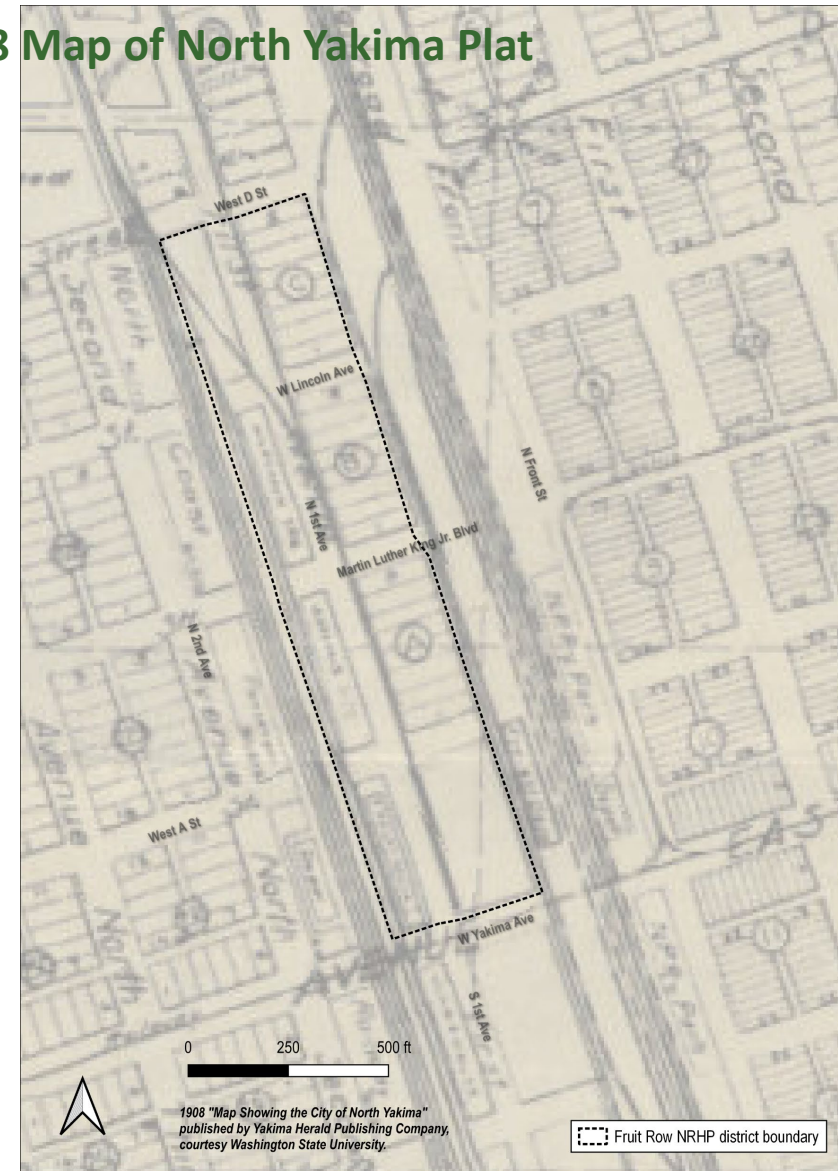
Fruit and Produce Row Historic District



1885 North Yakima Plat



1908 Map of North Yakima Plat

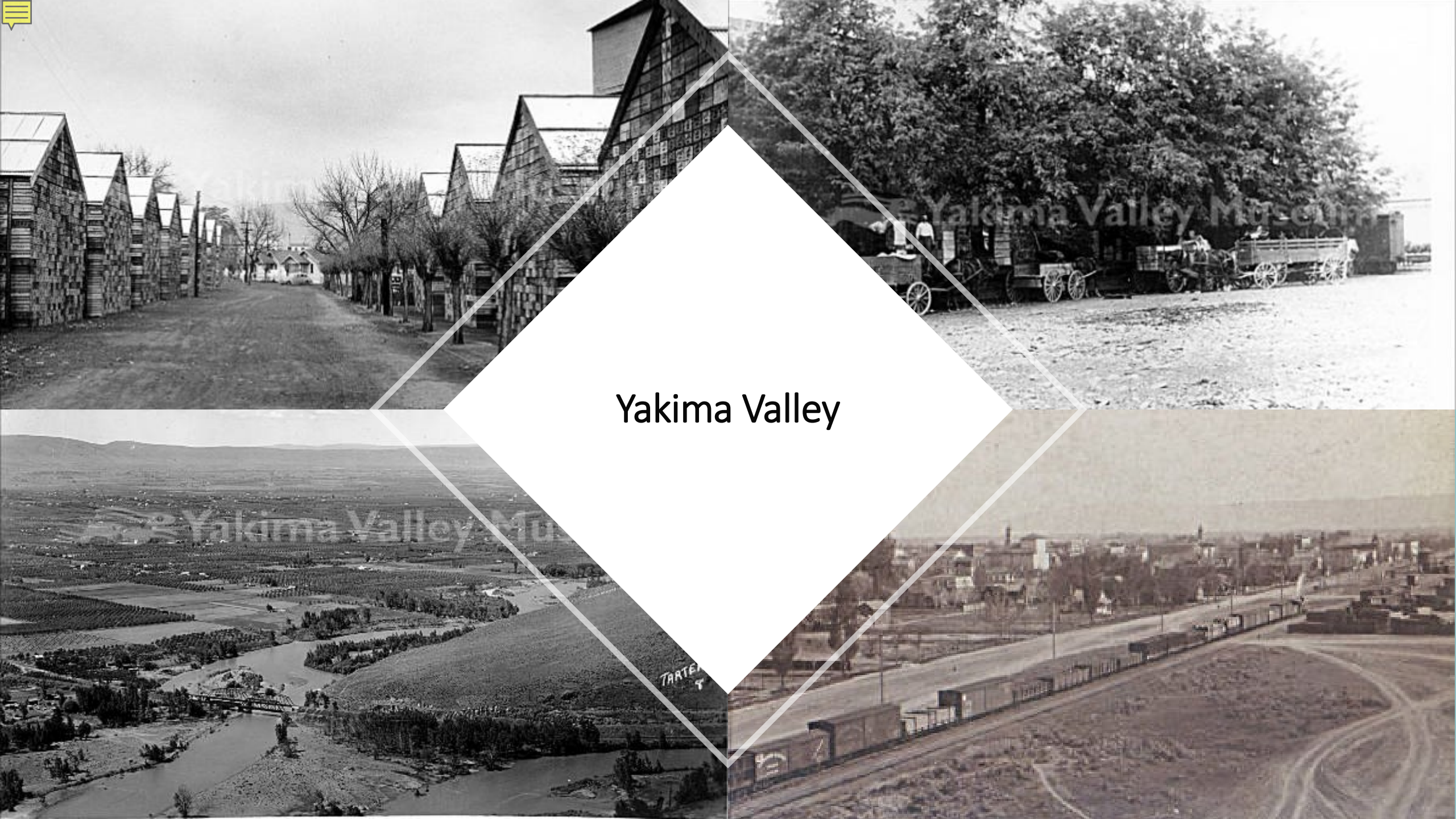


1920 Sanborn Fire Insurance Maps



1950 Sanborn Fire Insurance Maps





Yakima Valley





Fruit Production





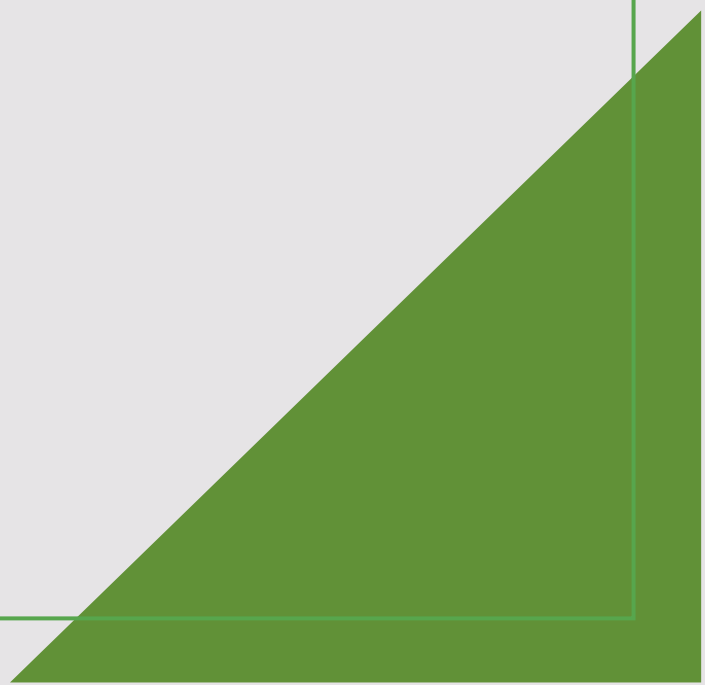
1940s-1960s





National Register

Frequently Asked Questions





FAQS	NATIONAL REGISTER HISTORIC DISTRICT	YAKIMA REGISTER HISTORIC DISTRICT
Will listing protect the building from demolition?	No	Yes
Once listed, will design review be required for exterior alterations?	No	Yes
Does listing require owner consent?	No	Yes
Will listing recognize the property's significance?	Yes	Yes
Will listing inform local planning and heritage education?	Yes	Yes
Does listing provide review federally funded or licensed projects?	Yes	Yes
Are property owners of historic buildings able to receive free technical assistance from DAHP or the City?	Yes	Yes
Will listing be a factor in property valuation by Yakima County?	No	No
Will listing affect owner's insurance?	No	No
Will the buildings have to be open to the public or tours?	No	No
Eligible for Federal Tax Credits?	Yes	No
Eligible for the State Special Valuation Program?	No	Yes

NEXT STEPS

