



# Shoreline Master Program Periodic Review

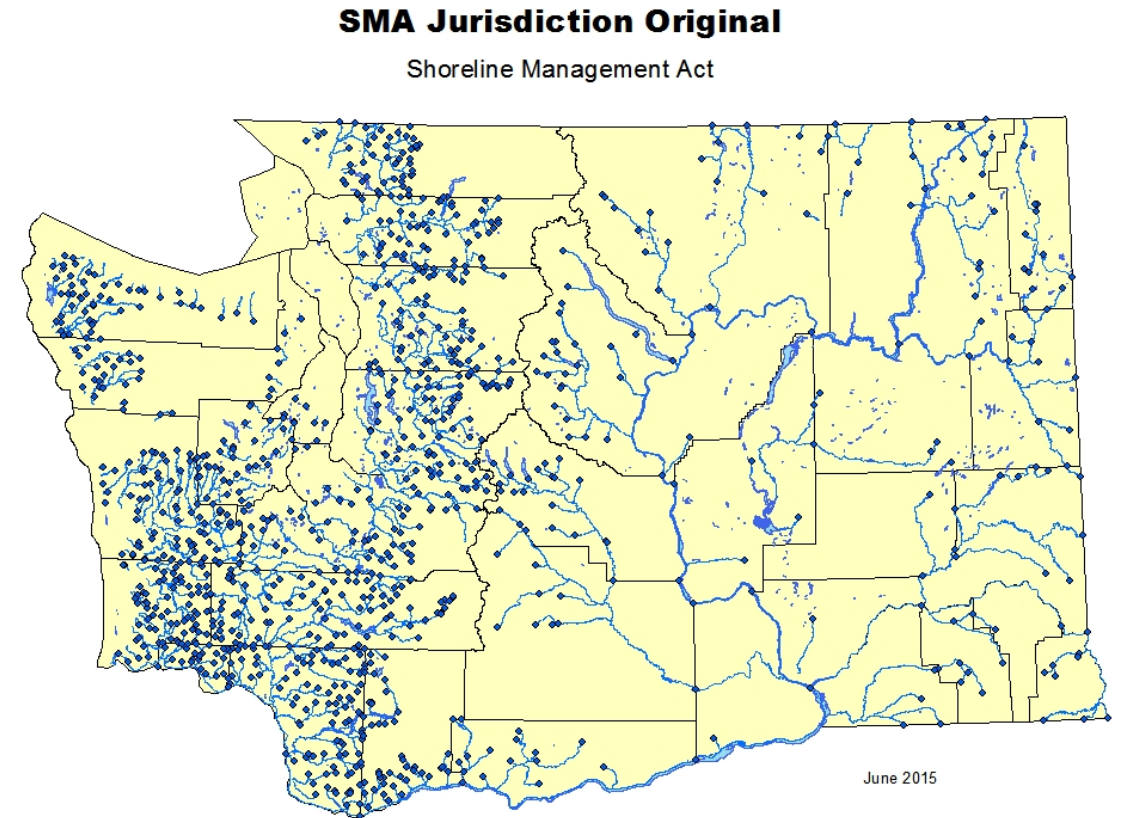
Planning Commission Meeting  
October 28, 2020





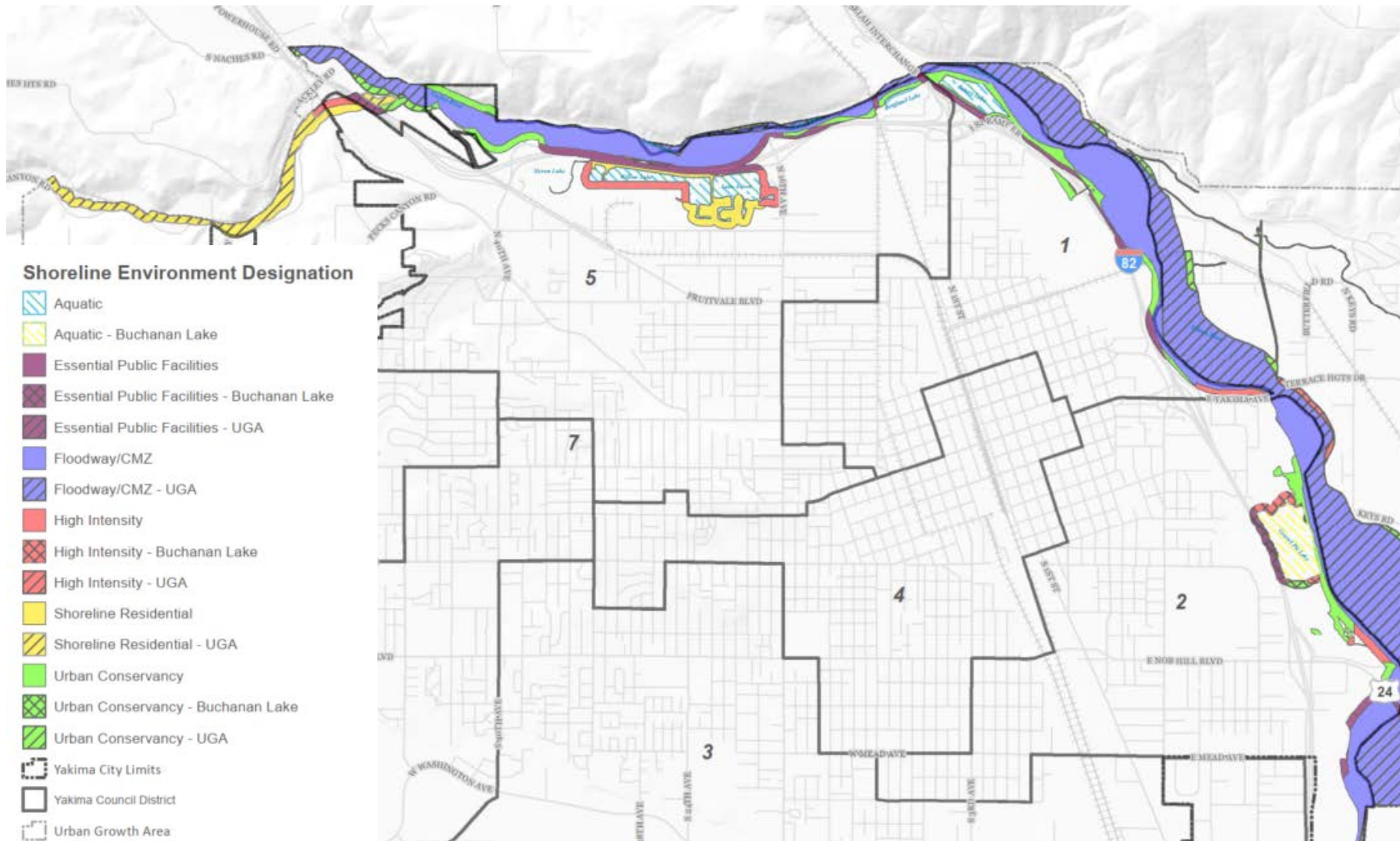
# Shoreline Management Act

- Plans for the responsible management of state shorelines
  - Environmental and habitat protection
  - Recreational / public access uses
  - Water-dependent uses
  - Residential uses
- State law and guidelines (RCW 90.58 and WAC 173-26 and 173-27)
- Requires periodic review of local SMPs every eight years
- Ecology must approve changes to local SMPs as well as local government



Source: Washington State Department of Ecology

# Shoreline Jurisdiction in Yakima



- Yakima River
- Naches River
- Cowiche Creek
- Willow Lake
- Lake Aspen
- Rotary Lake
- (Buchanan Lake)

Jurisdiction includes:

- Waterway
- Shorelands within 200'
- Floodway
- Associated wetlands
- Portions of the floodplain

# Yakima's Shoreline Master Program

- Major update adopted in 2014 in compliance with updated Ecology guidelines
- Amendments in 2017 with Comprehensive Plan Update
- Periodic Review must be completed by June 2021

## *We are Yakima* comprehensive plan 2040



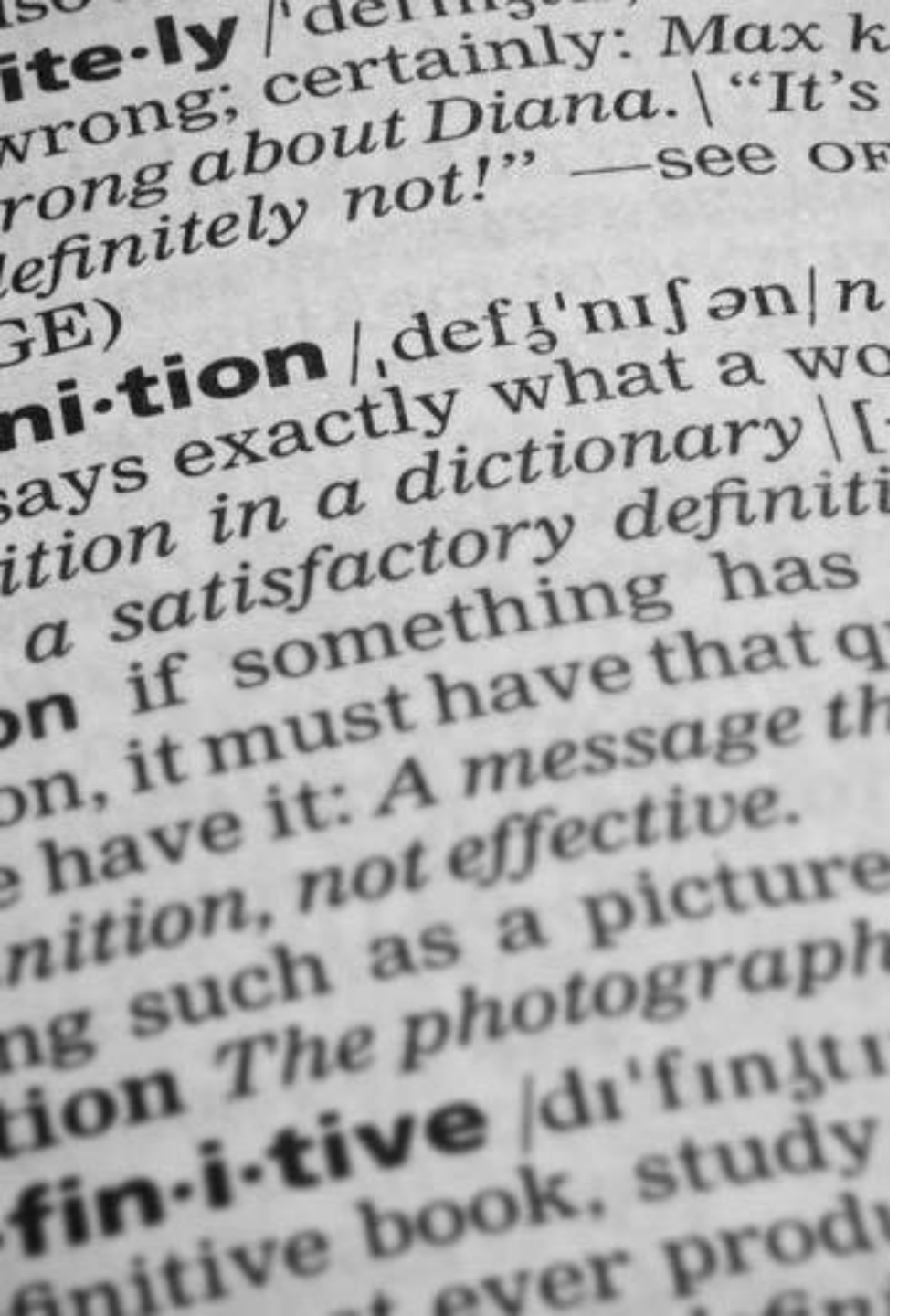


# Periodic Review

- Ensures the SMP stays current
- Uses a checklist to identify state policy and regulatory changes
- Local updates coordinate with critical area changes



Source: CowicheCanyon.org



## State Changes – Compliance Updates

- Clarify that the definition of “development” does not include dismantling or removing structures if there is no other associated action.
- Correct the definition of “Shoreline Hearings Board” to reflect that this body does not adjudicate appeals of SMPs.
- Update the definition of “date of filing” to match the WAC and use “date of filing” to identify the start of the appeal period to the Shoreline Hearings Board for permits.

# State Changes – Compliance Updates

- Include a list of activities that do not require local shoreline review
- Reference the provisions in the WAC that refer to the processes for conducting periodic reviews.
- Add a reference to the WAC that offers relief measures for property owners in cases where a shoreline restoration project changes the area in which shoreline regulations would be applied



# Local Changes – Critical Area Regulations



Wildlife Habitat



Wetlands



Geohazards



Flood areas



Drinking Water

## City Critical Area Regulations

- YMC 15.27 updated in 2017 to reflect the latest science – applies outside the shoreline
- YMC 17.09 applies within shoreline jurisdiction
- Updated through different processes and with different levels of approval
- Want as much consistency as possible





## Local Changes – Critical Area Regulations

- Update references to the wetlands rating system to match current Ecology guidance
- Update wetland buffers and related text to match Ecology guidance
- Integrate changes to critical aquifer recharge area regulations to be consistent with YMC 15.27



# Local Changes – Critical Area Regulations

- Increase buffers for salmonid-bearing tributaries (75 feet to 100 feet) and modify buffers on non-salmonid-bearing waters to match YMC 15.27
- Integrate changes to fish and wildlife conservation areas to require a discussion of federal or state management recommendations in a critical areas report





# Update Process



# Stay Involved

**[Ask.planning@yakimawa.gov](mailto:Ask.planning@yakimawa.gov)**



**[Yakimawa.gov/services/planning/smp/](http://Yakimawa.gov/services/planning/smp/)**



**(509) 575-6183**