

IMPORTANT INFORMATION

DON'T GET LEFT WITHOUT IRRIGATION WATER!!

Irrigation Shut Off Valve Deadline April 1, 2001

Yakima Municipal Code 7.24.210, states all City of Yakima Irrigation Customers are encouraged to install an *Irrigation Shut Off Valve* on their property in addition to the city's existing *Valve*.

Customers who fail to install a *Valve* by *April 1, 2001*, risk:

- A **\$25.00** fee (Yakima Municipal Code 7.24.260), will be charged to any customer who requests the Irrigation Division to come out and turn off their water for any reason (includes: breaks in the line, repairs, etc.).

Common Questions Asked:

- **Who can install this *Valve*?**
If help is needed check the Yellow Pages.
- **Where is the City's *Valve* to my property?**
Call the Irrigation Division - we will gladly come out and Locate and Mark our existing *Valve* at no charge.

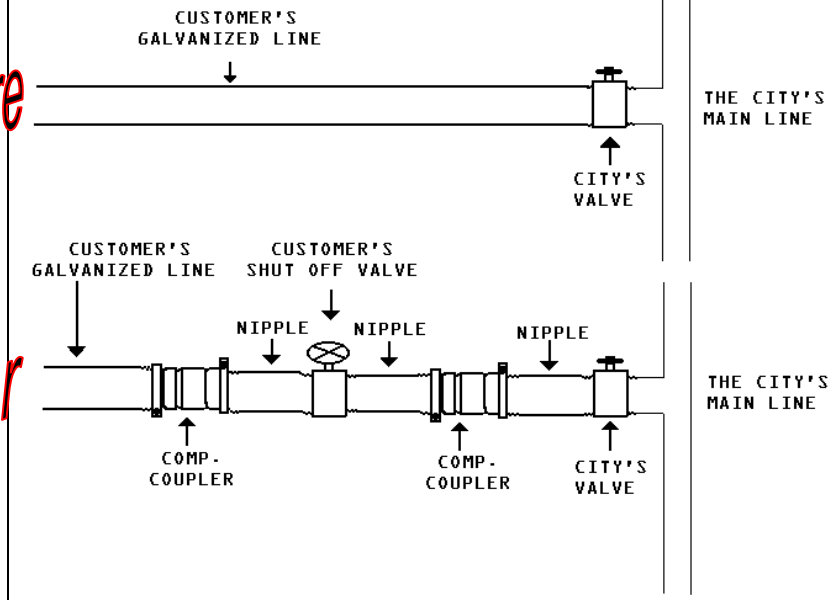
Helpful Information:

- **Helpful Tips and Suggested Parts Needed for installation are located on the back of this sheet.**
- **Get a couple of different quotes or estimates. Prices may vary.**

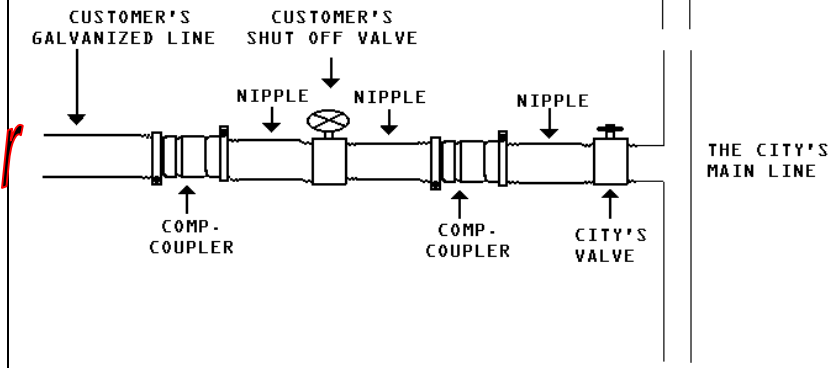
If you have questions, please contact the
Irrigation Division at 575-6194

Galvanized Lines

Before



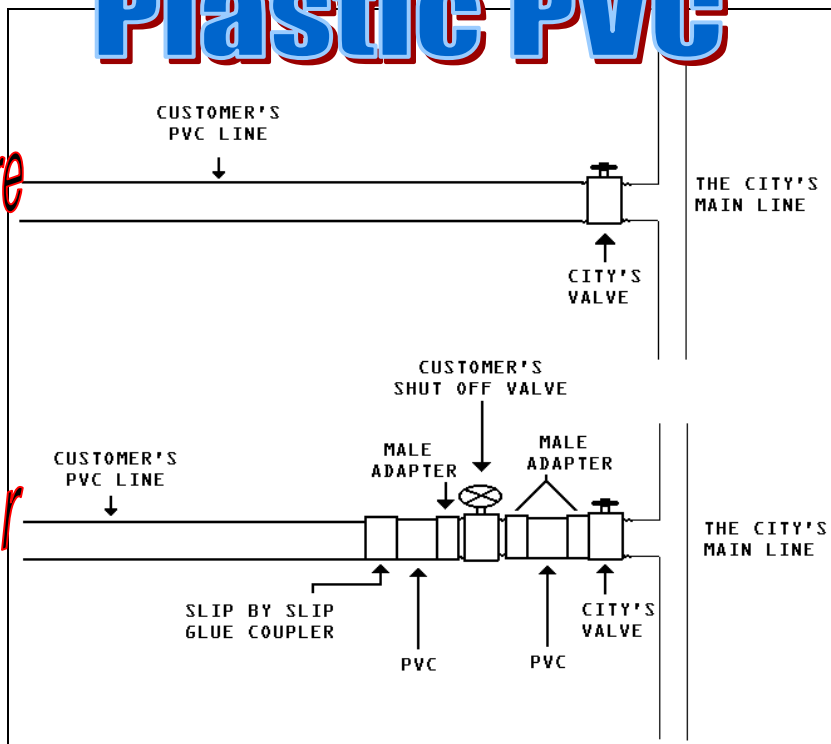
After



Regulations: Valve must be installed at least ONE (1) foot from the City's Valve, unless for some reason there is some type of obstacle that would prevent it; cement, shed, etc. Keep in mind you are still responsible for the line in between the City's Valve and your New Valve; if a break occurs between the Valves, the customer will still be charged \$25 for the Service Call ... so try not to get too far away.

Plastic PVC

Before



After

